

CONTRACT DOCUMENTS
FOR
LOS MEDANOS COLLEGE
2700 E. Leland Rd. Pittsburg, CA 94565

L-630 New Brentwood Center

AT

1351 Pioneer Square
Brentwood, California, 94542

CONTRA COSTA COMMUNITY COLLEGE DISTRICT

Consist of the following:

DSA File #7-C1
DSA Application # 01-116287

ADDENDUM #4

Architect: **RATCLIFF**
5856 Doyle Street Emeryville, CA 94608

May 7, 2018



CONTRA COSTA COMMUNITY COLLEGE DISTRICT

L-630 New Brentwood Center

Los Medanos College

ADDENDUM #4

Date: 5/7/18

NOTICE TO ALL PRE-QUALIFIED CONTRACTORS ONLY

You are hereby notified of the following changes, clarifications and/or modifications to the original Contract Documents, Project Manual, Drawings, Specifications and/or previous Addenda. This Addendum shall supersede the original Contract Documents and previous Addenda wherein it contradicts the same, and shall take precedence over anything to the contrary therein. All other conditions remain unchanged.

This Addendum forms a part of the Contract Documents and modifies the original Contract Documents dated April 3, 2018. Acknowledge receipt of this Addendum in space provided on the Bid Proposal Form. Failure to acknowledge may subject Bidder to disqualification.

A. REVISION TO DRAWINGS SHEETS:

All drawing modifications are indicated on the drawings with a cloud graphic and a Delta 4.

1. A-505 – EXTERIOR DETAILS – WALL ASSEMBLIES

Details A2 and C1: Revised horizontal Z-girt spacing to 16” on-center vertically; revised vertical panel clip attachment screw spacing to 16” on-center.

2. A-520 – EXTERIOR DETAILS – AREA B

Detail A2: Revised to “TYPICAL LARGE FIBER CEMENT PANEL SILL DETAILS”; revised stainless steel flashing to stainless steel starter girt, including profile; revised metal thickness to 14 gauge.

B. PRE-BID RFI's

1. **Question: RFI 001: The Nichiha large format fiber cement panels will not align with the framing as currently drawn.**

Response: Nichiha panels are oriented vertically are supported with a continuous starter track and held in place with vertical clips. Clips are attached to horizontal Z-girts which are attached to wall framing as indicated on Drawings. Z-girt spacing changed per revised drawings attached this addendum.

ADDENDUM #4

DSA Appl. # 01-116287

If you have any questions regarding this Addendum, please contact:

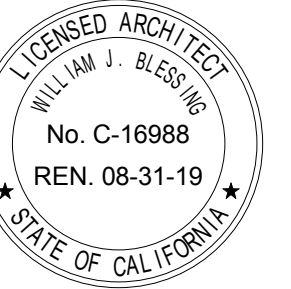
Jovan Esprit
Contra Costa Community College District
500 Court St., Martinez, CA 94553
Email: jesprit@4cd.edu;
Facsimile: 925-229-6959

All other terms and conditions of BID are to remain the same.

Mark McFarlin
mmcfarlin@ratcliffarch.com
Senior Project Architect- **RATCLIFF**
5856 Doyle Street
Emeryville, CA 94608

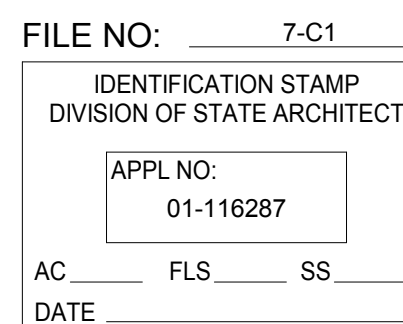
END OF ADDENDUM #4

SEALS AND SIGNATURES

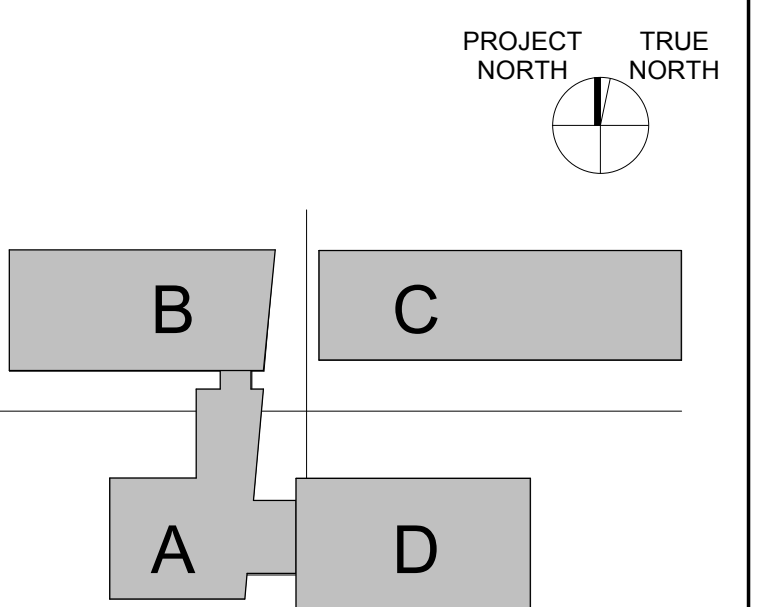


ISSUE SCHEDULE	NO	DATE
DSA APPROVAL		03/21/18
ADDENDUM NO. 4	4	05/07/18

DSA APPROVAL



KEY PLAN



LOS MEDANOS COLLEGE

L-630 NEW BRENTWOOD CENTER

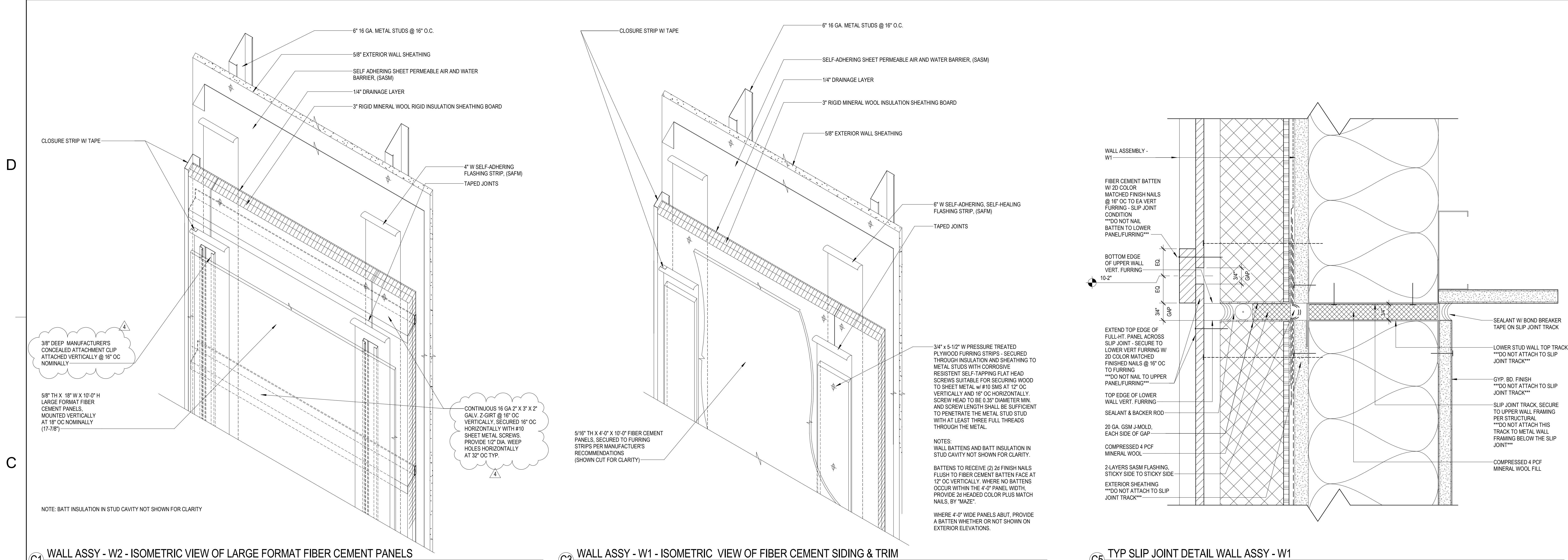
SHEET TITLE:
EXTERIOR DETAILS - WALL ASSEMBLIES

SCALE: As indicated
PROJECT NUMBER: 35003

SHEET NUMBER: **A-505**

ADDENDUM NO. 4

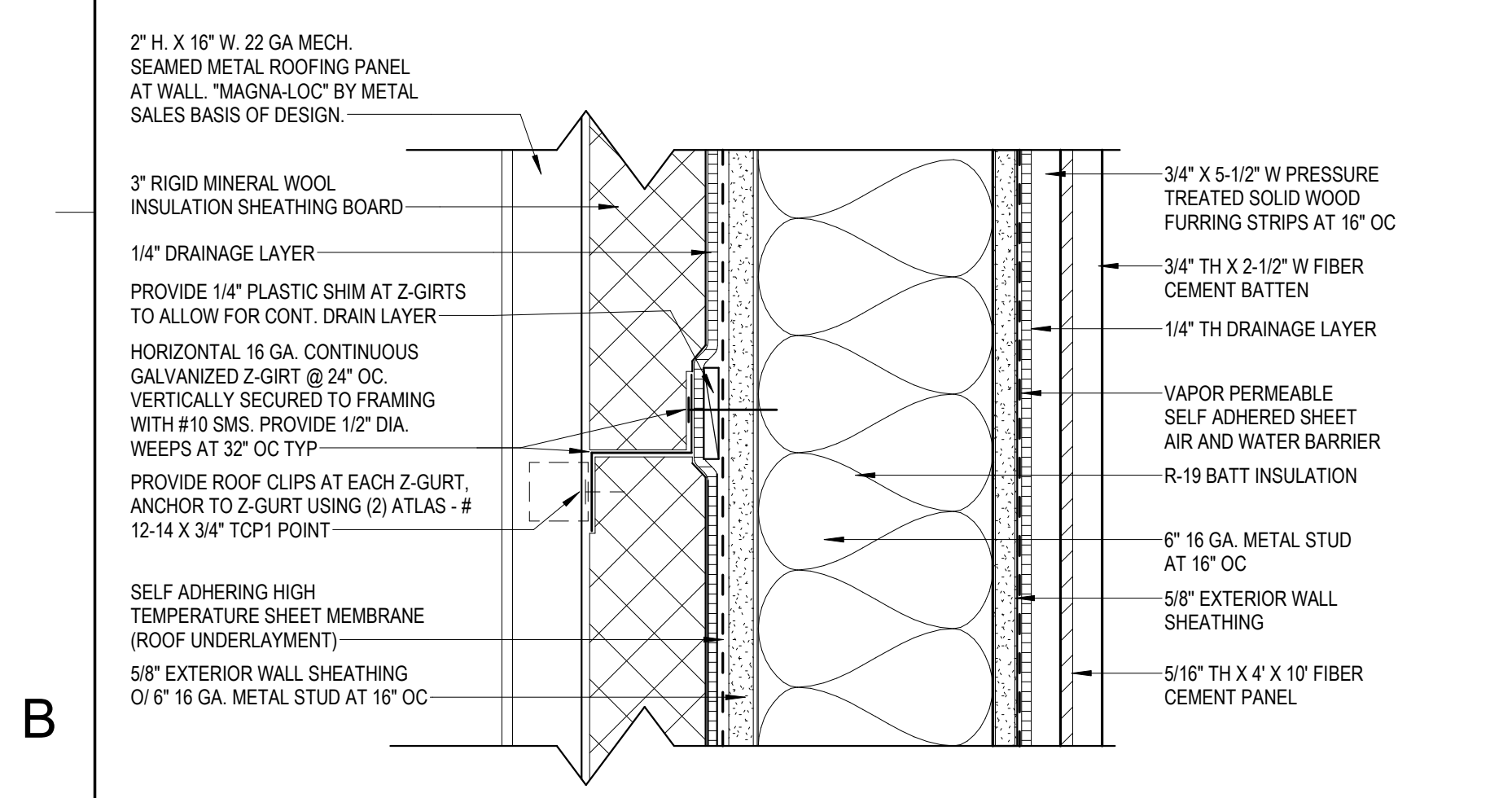
05/07/18



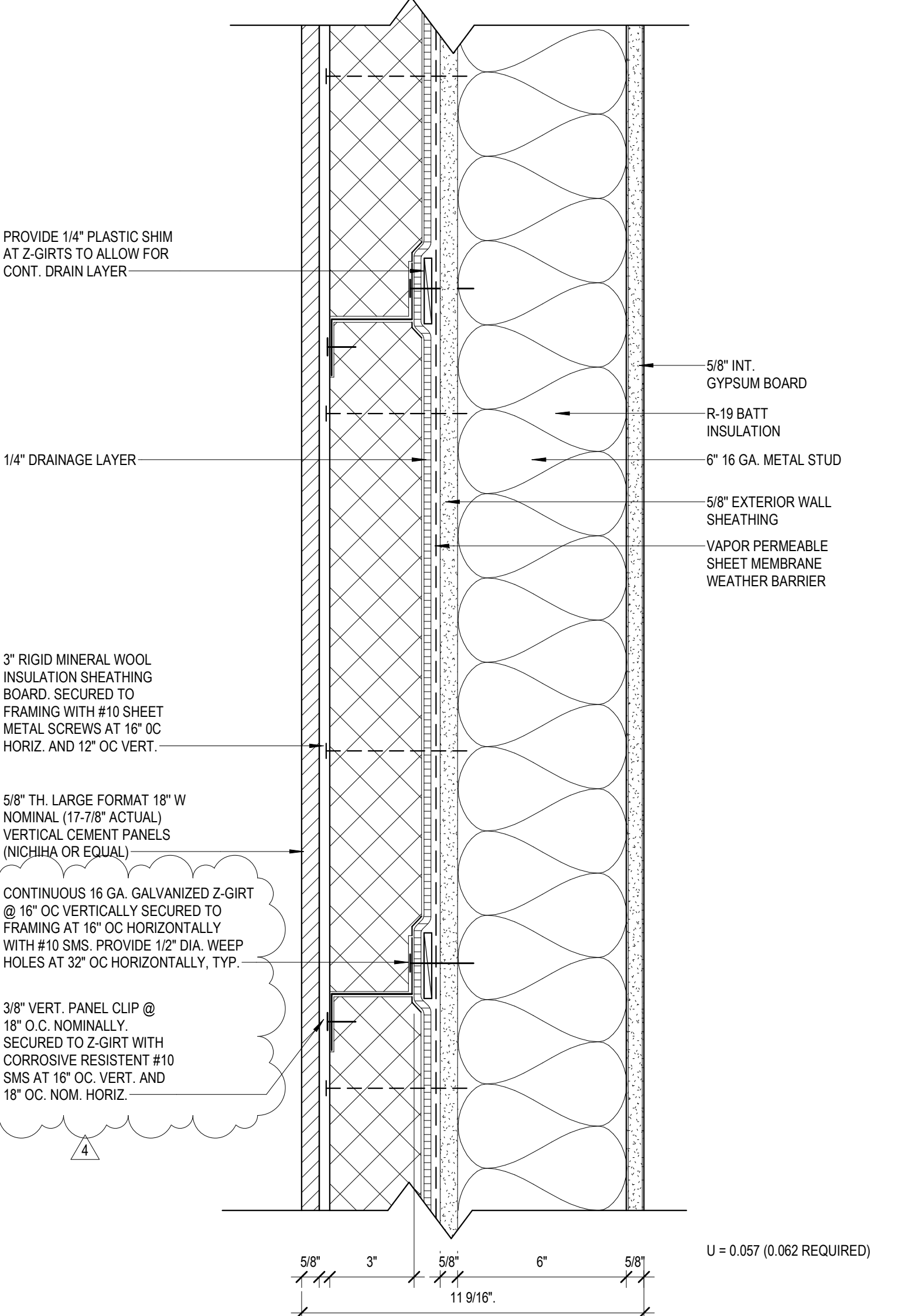
C1 WALL ASSY - W2 - ISOMETRIC VIEW OF LARGE FORMAT FIBER CEMENT PANELS
1 1/2" = 1'-0"

C3 WALL ASSY - W1 - ISOMETRIC VIEW OF FIBER CEMENT SIDING & TRIM
1 1/2" = 1'-0"

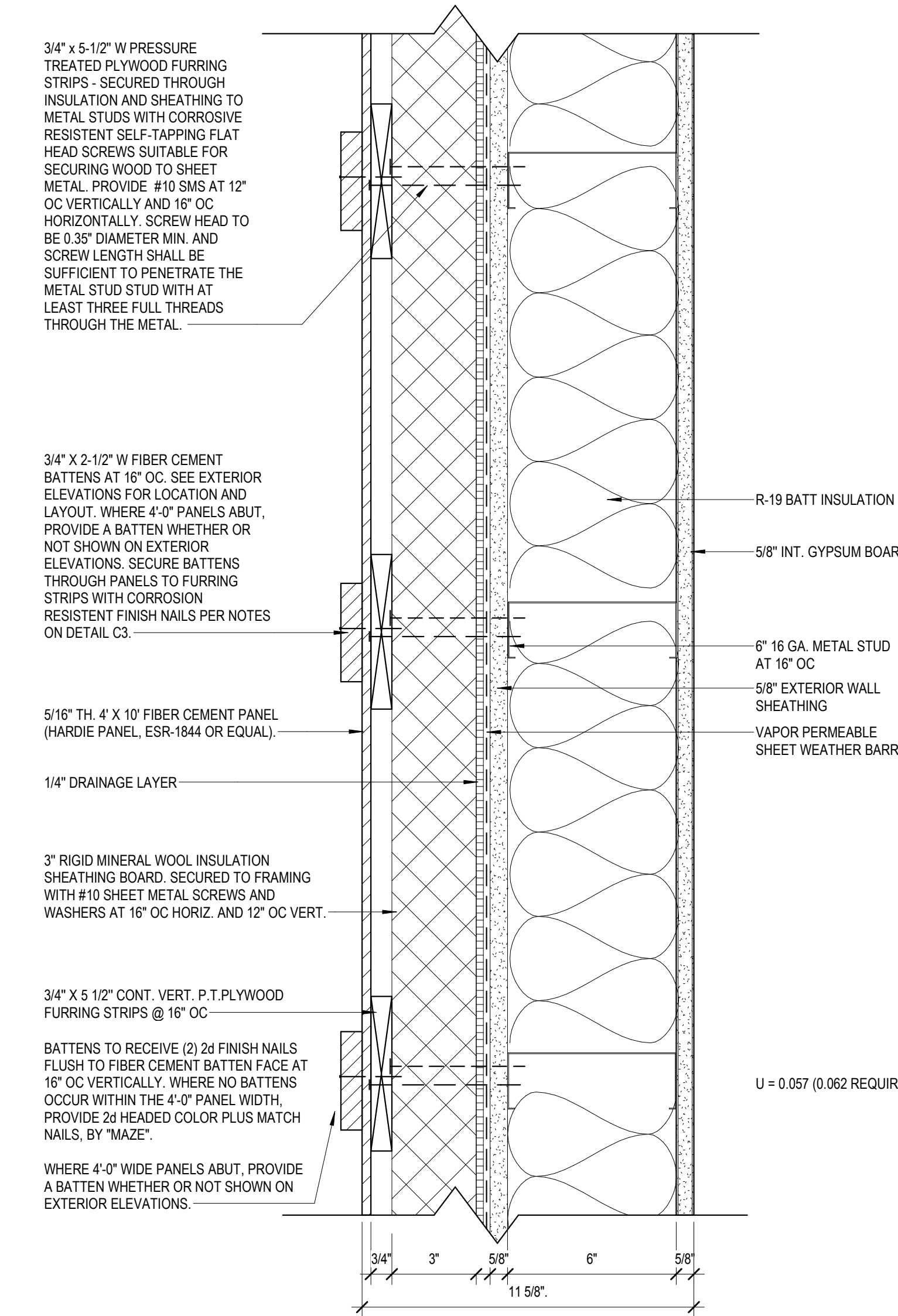
C5 TYP SLIP JOINT DETAIL WALL ASSY - W1
6" = 1'-0"



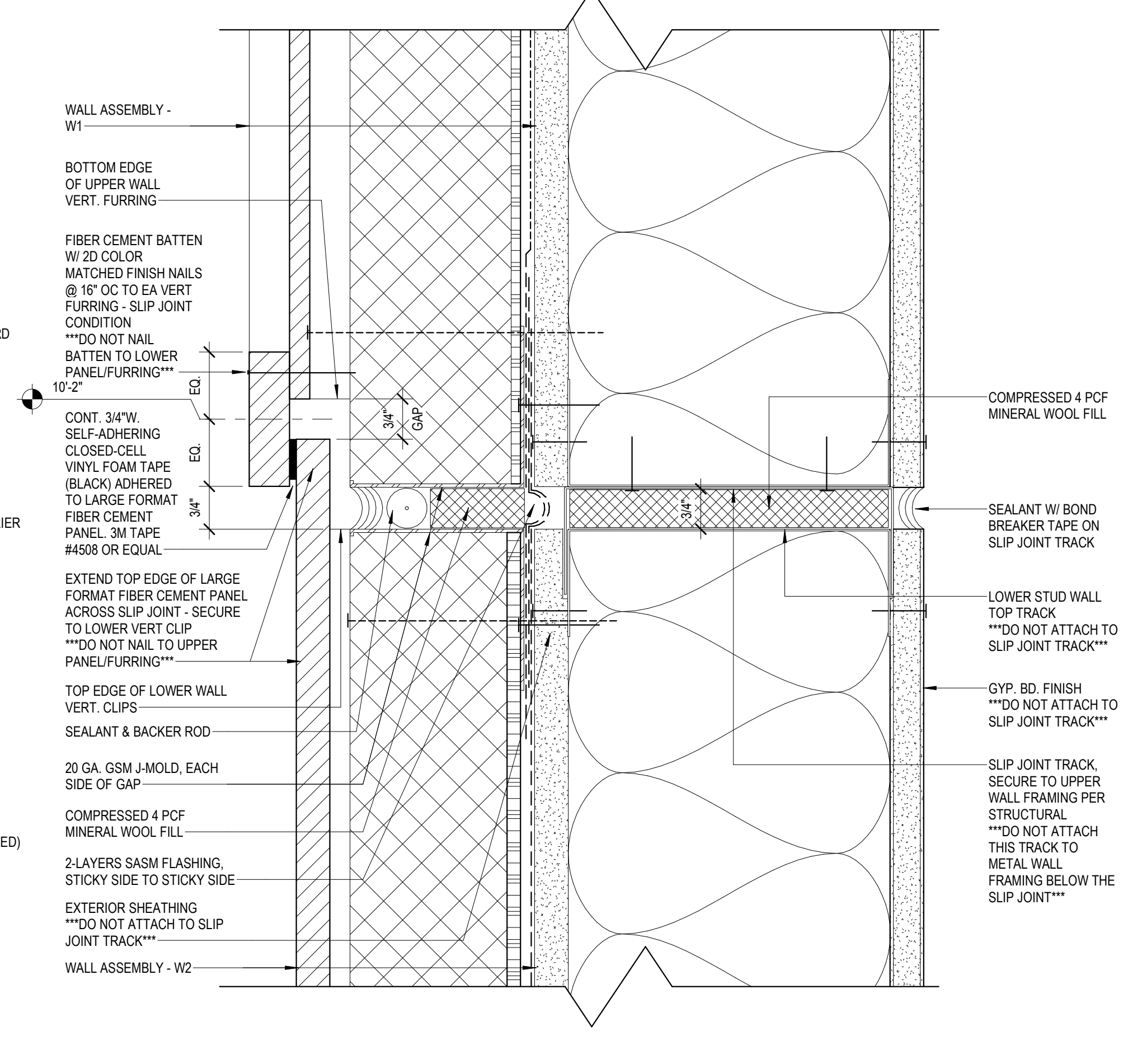
B1 WALL ASSY - W4 - MTL ROOFING AS WALL FINISH (SECTION VIEW)
3" = 1'-0"



A2 WALL ASSY - W2 - LARGE FORMAT FIBER CEMENT PANELS (SECTION VIEW)
3" = 1'-0"



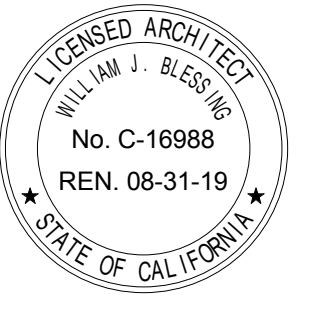
A3 WALL ASSY - W1 - FIBER CEMENT SIDING & TRIM (PLAN VIEW)
3" = 1'-0"



A4 TYP SLIP JOINT DETAIL WALL ASSY - W1 OVER W2
6" = 1'-0"

A1 WALL ASSY - W4 - MTL ROOFING @ CLASSROOM MONITORS SIDE WALLS (PLAN VIEW)
3" = 1'-0"

SEALS AND SIGNATURES

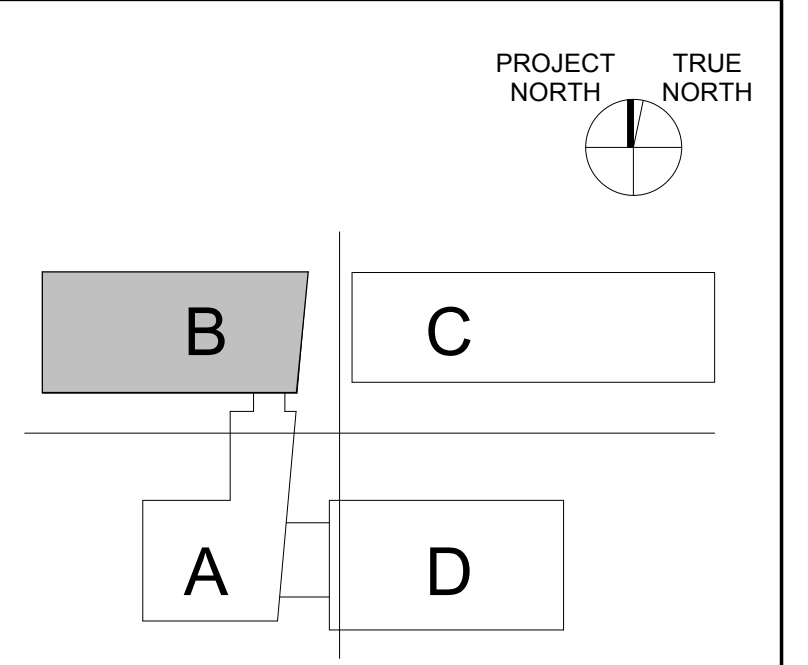


ISSUE SCHEDULE	NO	DATE
DSA APPROVAL		03/21/18
ADDENDUM NO. 4	4	05/07/18

DSA APPROVAL

FILE NO: 7-C1
IDENTIFICATION STAMP
DIVISION OF STATE ARCHITECT
APPL NO: 01-116287
AC: FLS SS
DATE

KEY PLAN



LOS MEDANOS COLLEGE

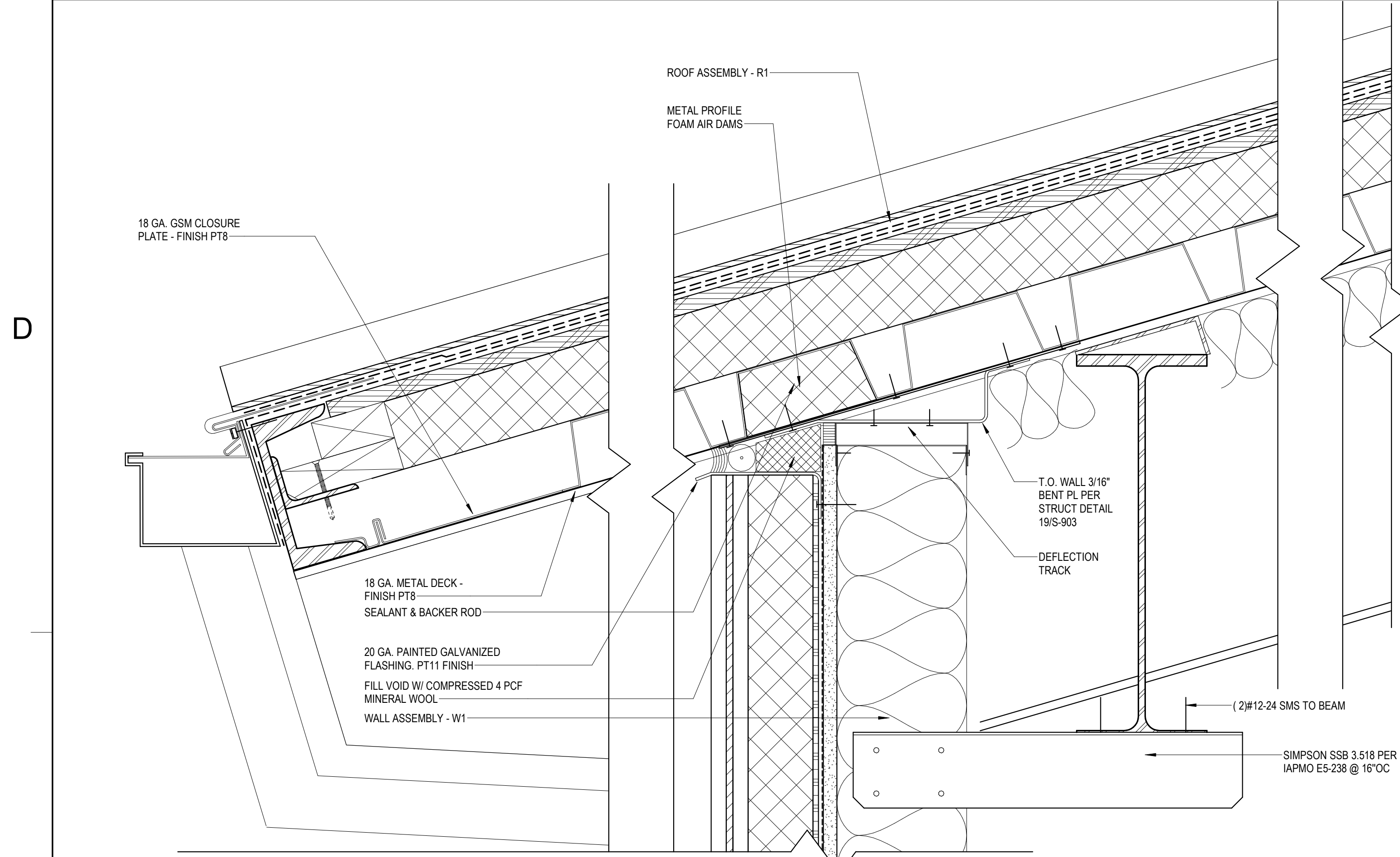
L-630 NEW BRENTWOOD CENTER

SHEET TITLE:
EXTERIOR DETAILS - AREA B

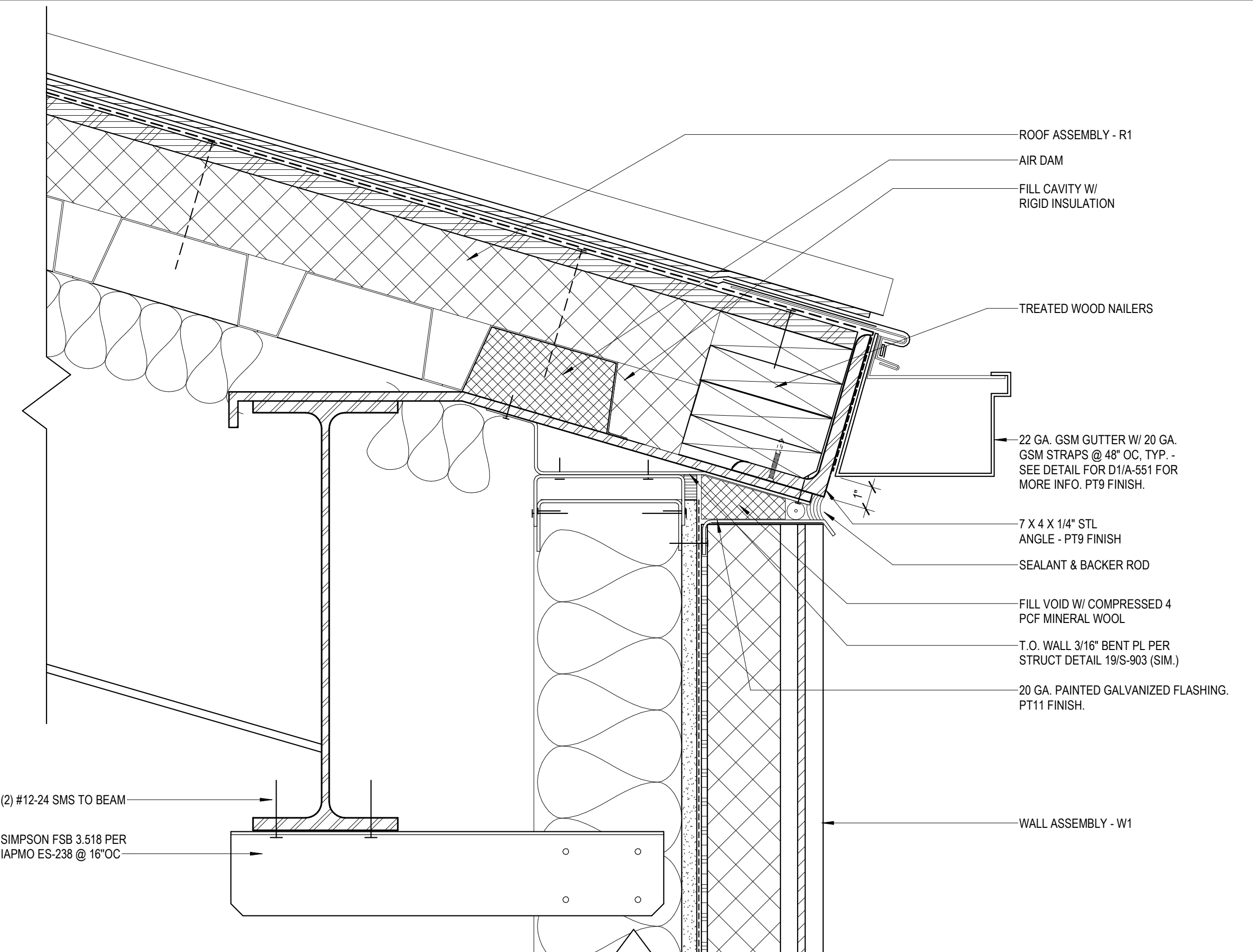
SCALE: 3" = 1'-0"
PROJECT NUMBER: 35003

SHEET NUMBER: **A-520**

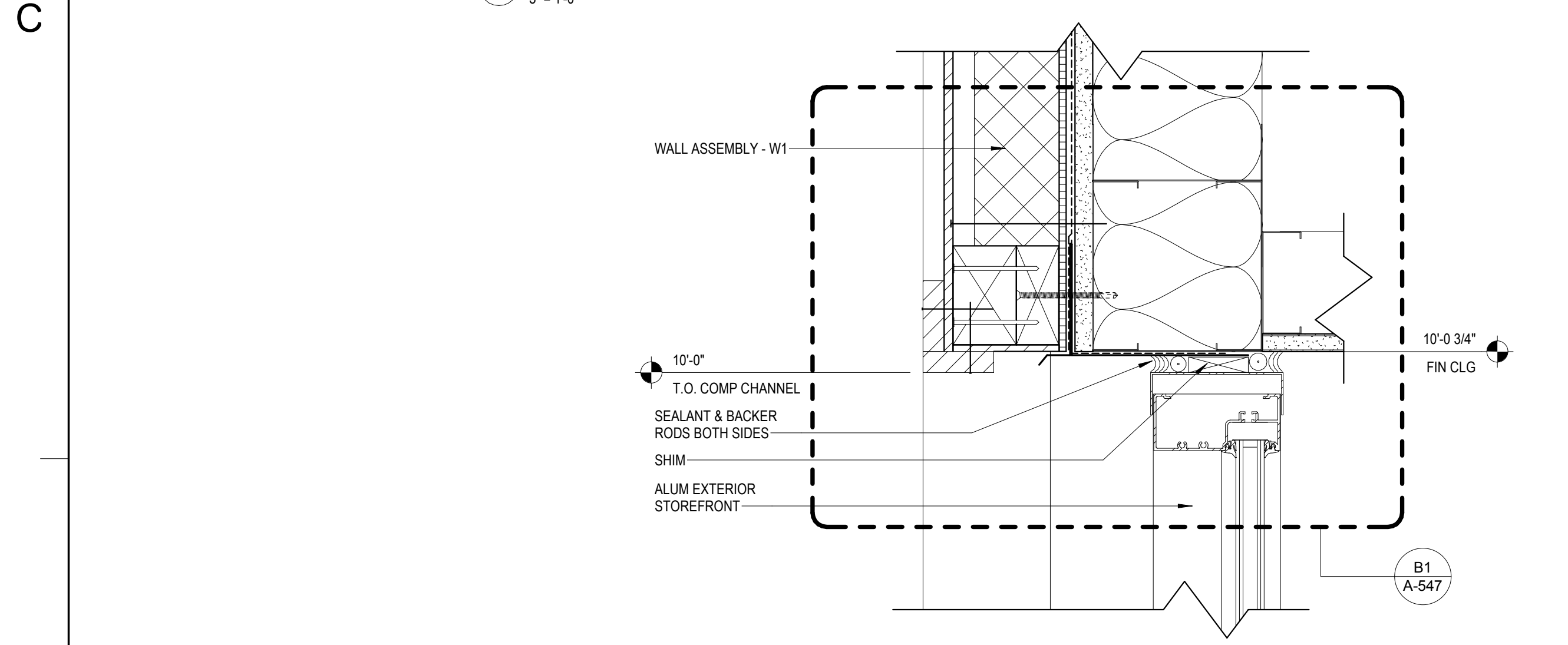
ADDENDUM NO. 4 05/07/18



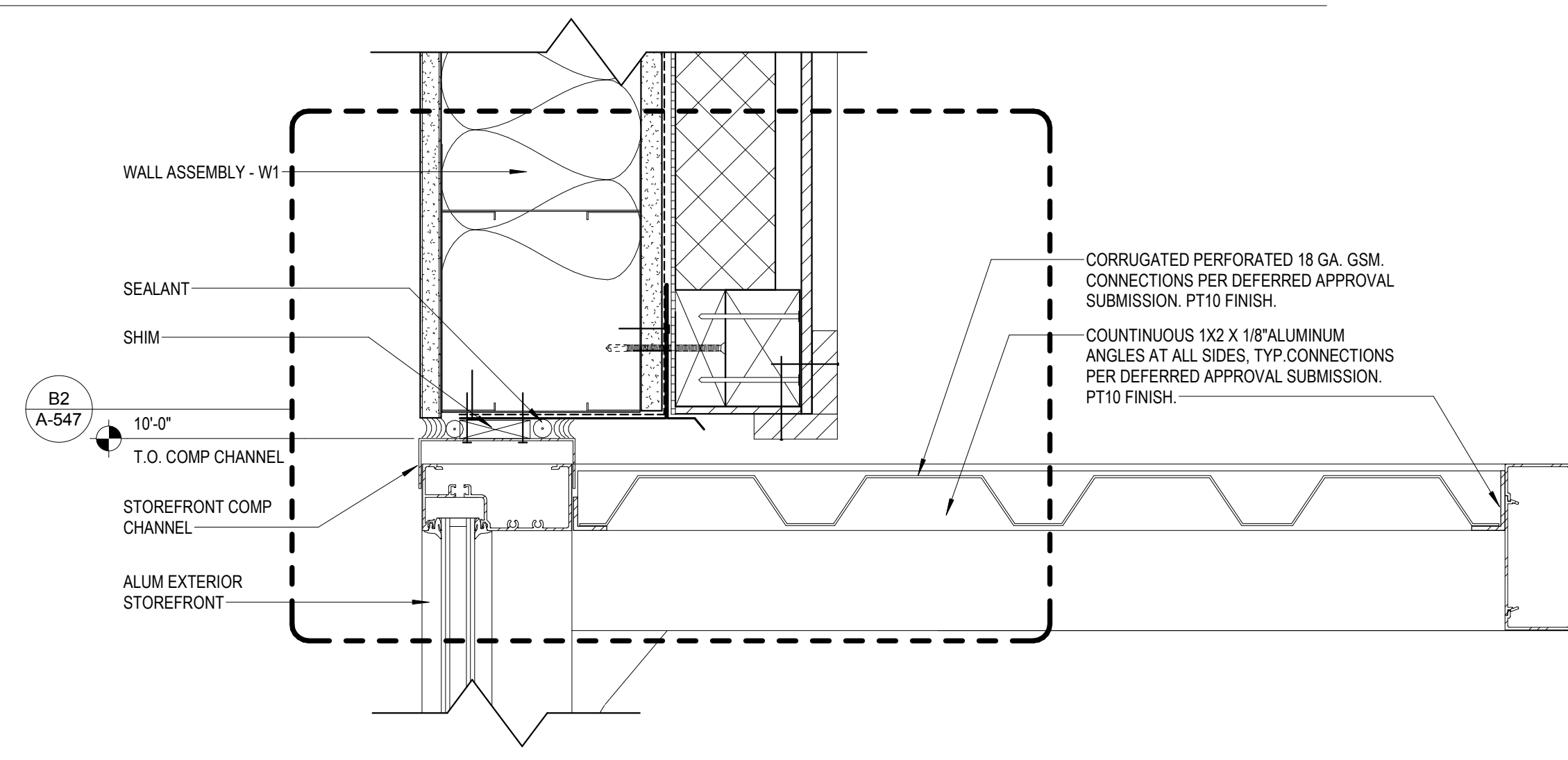
D1 HEAD OF WALL & GUTTER DETAILS AT LAB NORTH
3" = 1'-0"



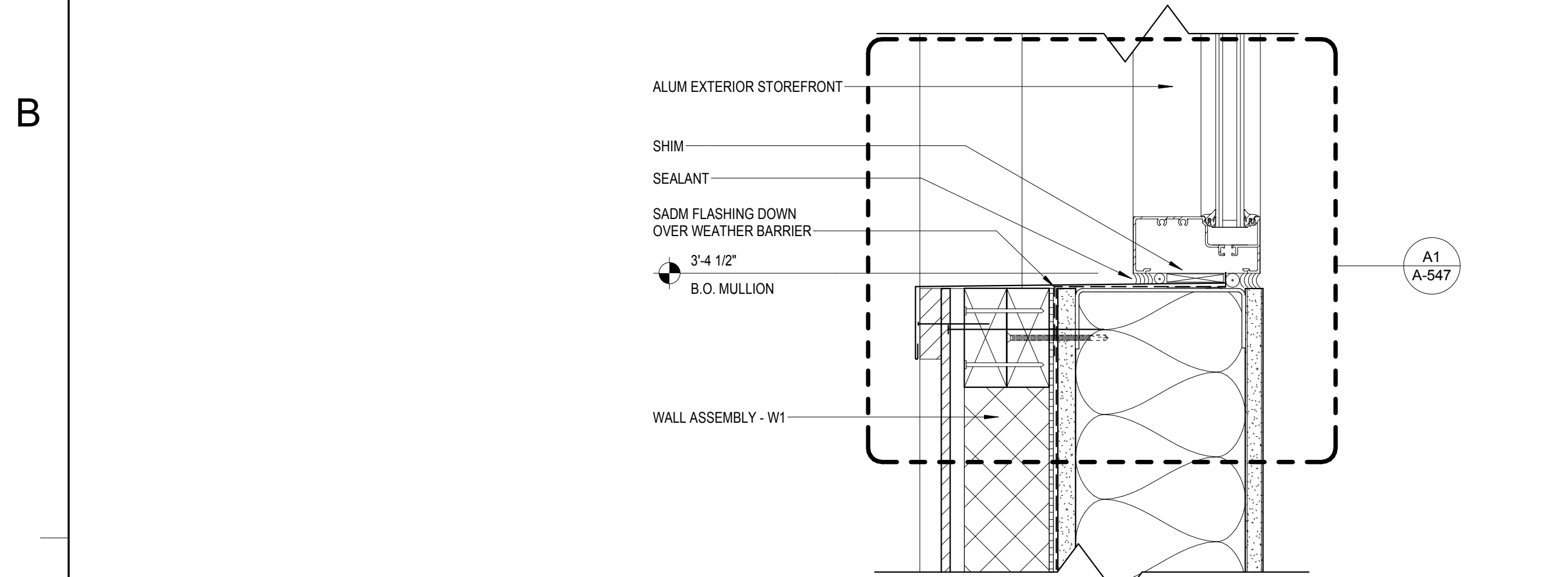
D2 HEAD OF WALL & GUTTER DETAILS AT LAB CLASSROOM SOUTH
3" = 1'-0"



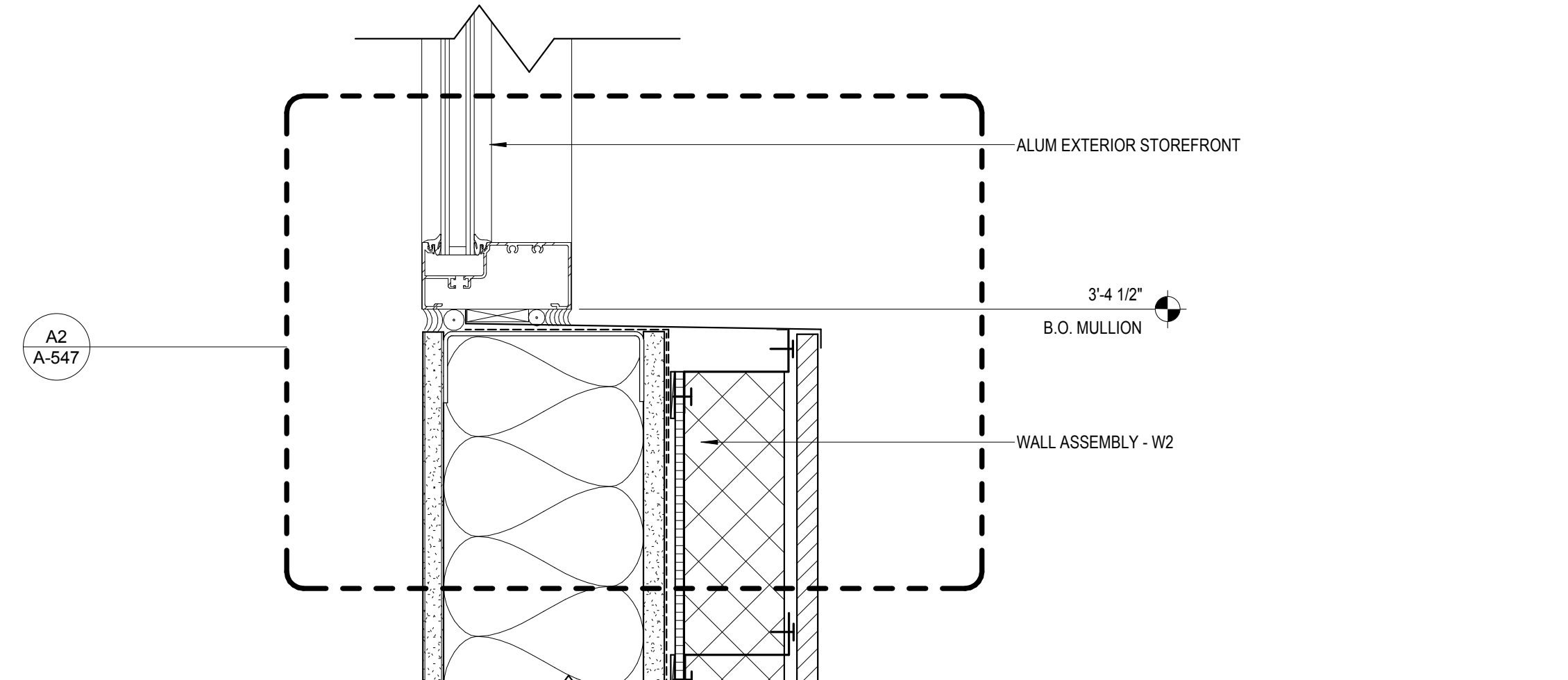
C1 WINDOW HEAD DETAIL AT LAB NORTH
3" = 1'-0"



C2 WINDOW HEAD RECESS DETAILS AT LAB CLASSROOM SOUTH
3" = 1'-0"

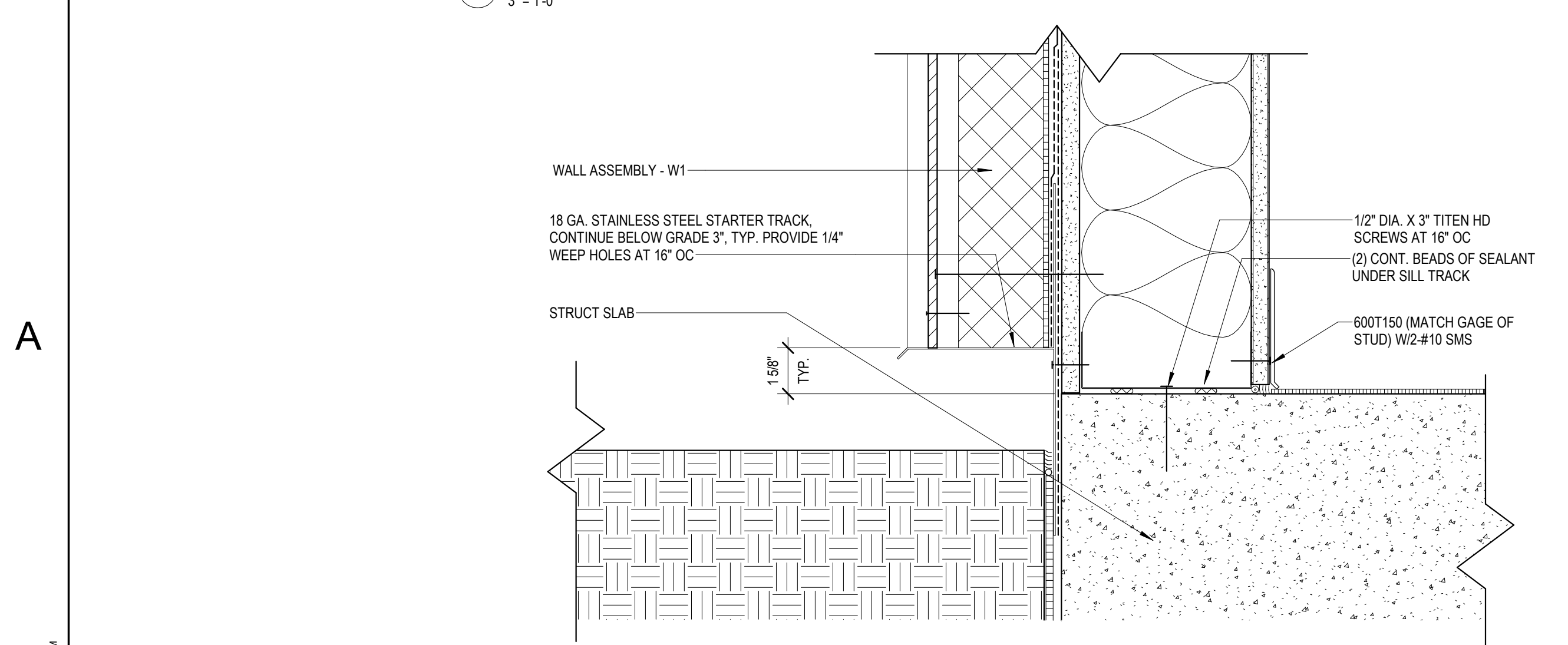


B1 WINDOW SILL DETAIL AT LAB CLASSROOM NORTH
3" = 1'-0"

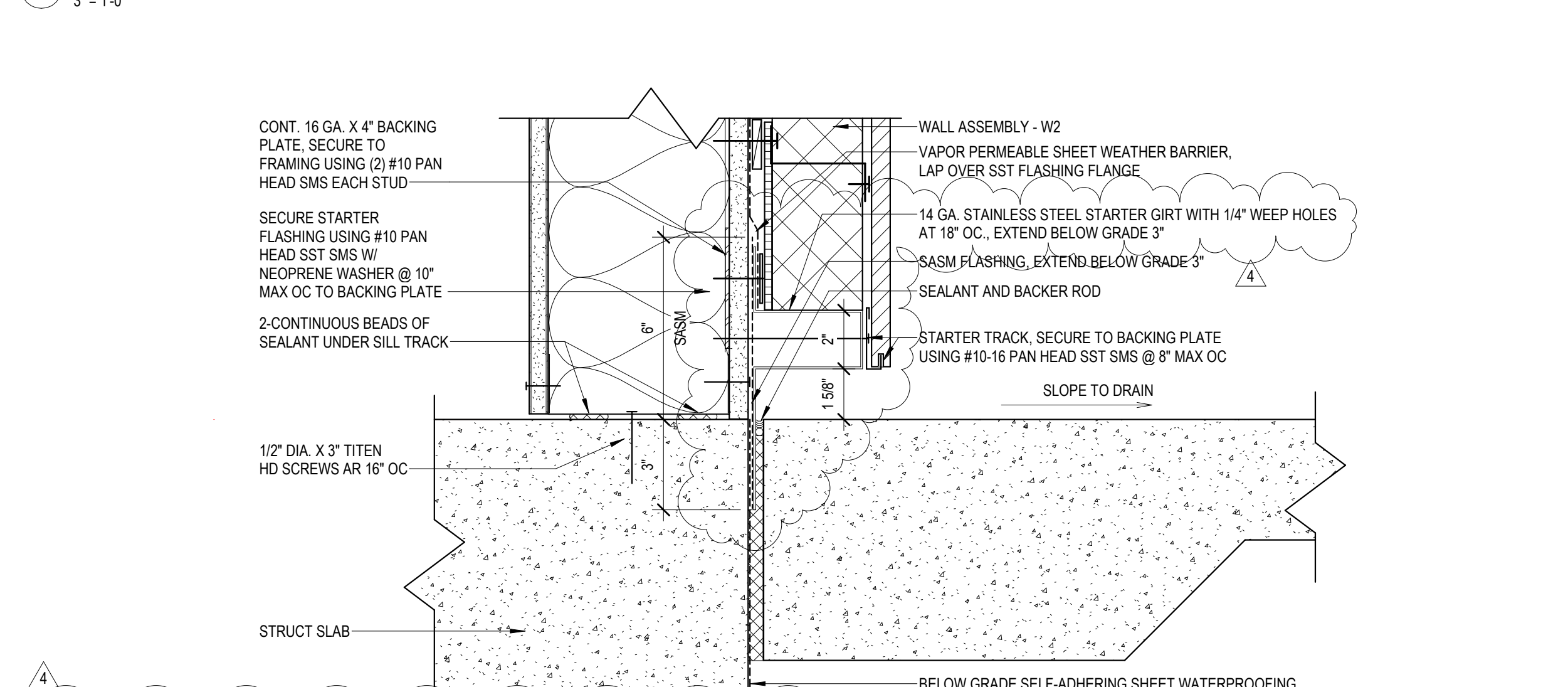


B2 SILL DETAILS AT LAB CLASSROOM SOUTH
3" = 1'-0"

NOTE:
ALL WINDOW CONNECTIONS/FASTENERS PER WINDOW SYSTEM DESIGN ENGINEER AS PART OF DEFERRED APPROVAL, TYPICAL THIS PROJECT.



A1 FIBER CEMENT SILL DETAIL AT LAB CLASSROOM NORTH
3" = 1'-0"



A2 TYP. LARGE FORMAT FIBER CEMENT PANEL SILL DETAILS
3" = 1'-0"