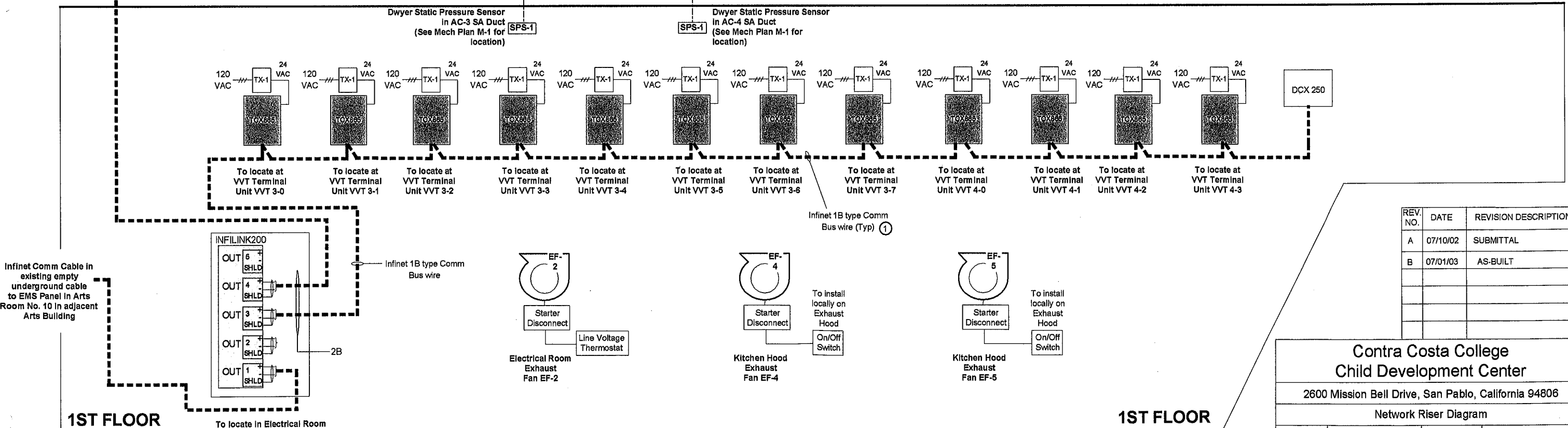
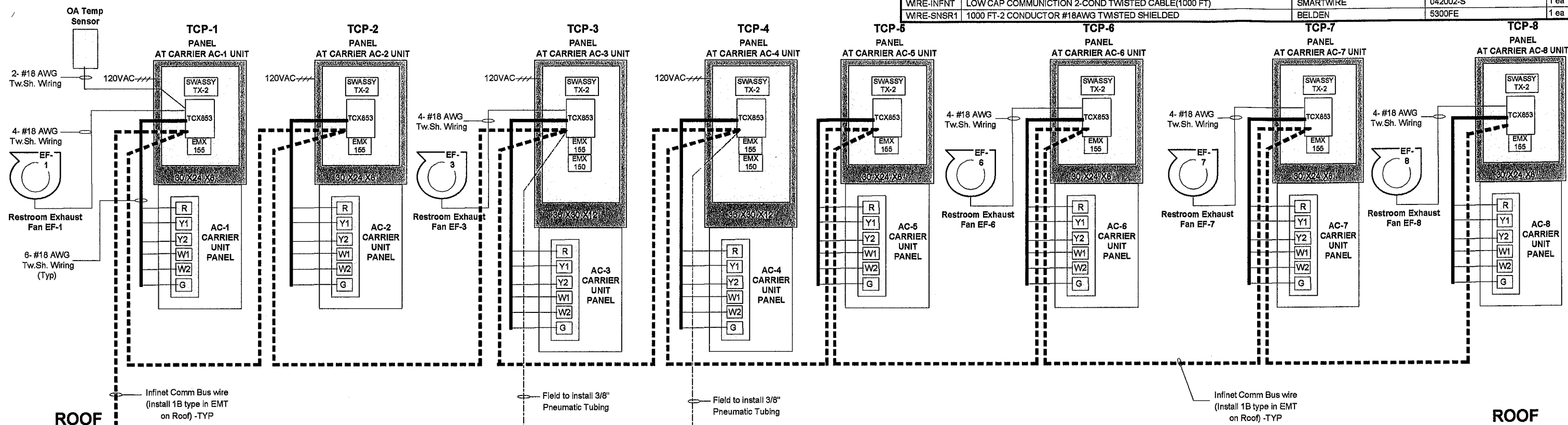


Bill of Materials

DID	DESCRIPTION	MANUFACTURER	PART NUMBER	QTY
DCX 250	DCX 250 TOUCH SCREEN	ANDOVER	01-0008-300	1 ea
INFILINK	INFILINK 200	ANDOVER	01-0008-600	1 ea
TUBING	3/8IN BLACK PNEUM TUBING 250 FT	KELE & ASSOC.	T-110	1 ea
WMRE-INFNT	LOW CAP COMMUNICATION 2-COND TWISTED CABLE(1000 FT)	SMARTWIRE	042002-S	1 ea
WMRE-SNSR1	1000 FT-2 CONDUCTOR #18AWG TWISTED SHIELDED	BELDEN	5300FE	1 ea



REV. NO.	DATE	REVISION DESCRIPTION
A	07/10/02	SUBMITTAL
B	07/01/03	AS-BUILT

**Contra Costa College
Child Development Center**

2600 Mission Bell Drive, San Pablo, California 94806

Network Riser Diagram

REV. B	AS-BUILT	7/01/03	JOB NO: 13180081
--------	----------	---------	------------------

CHECK BY: JG
DRAWN BY: NM

5 of 18

- General Notes**
- See Table on Legend Sheet 3 for type and size of wiring to use for Andover Infinet Bus cable, standard sensor wiring cable, 24VAC and 24VDC power cable.
 - Control Panels to be provided 120VAC by Div.16 on dedicated circuits.

**CCC- Child Development Center
Network Riser Diagram**