

1 CHILLER ROOM HAZARDOUS MATERIALS ABATEMENT PLAN
 SCALE: 1/4" = 1'-0" N

SHEET NOTES

1. ABATE ACM WHITE SEALANT AT ALL SEAMS OF (E) COOLING TOWER. DISMANTLE AS REQUIRED TO ACCESS SEALANT.
2. ABATE ACM FLANGE GASKETS AT PIPING ASSOCIATED WITH (E) COOLING TOWER, CHILLER AND PCH UNITS SCHEDULED FOR DEMOLITION.
3. (E) EQUIPMENT AND ASSOCIATED PIPING AND CONTROLS TO REMAIN.
4. ABATE ACM OFF WHITE SEALANT AT (E) ENDS OF FIBERGLASS INSULATION AND VALVE BODIES. TYPICAL LOCATIONS.

HAZARDOUS MATERIAL NOTES

- A. THE GENERAL NOTES APPLY TO ALL HAZARDOUS MATERIALS WORK AND SHALL BE APPLICABLE AS IF INCLUDED ON EACH HAZARDOUS MATERIALS FLOOR PLAN.
- B. THE HAZARDOUS MATERIALS DRAWINGS INDICATE THE GENERAL LOCATIONS OF ACMs AS DETERMINED FROM RGA'S LIMITED SURVEY CONDUCTED IN JUNE OF 2016. THE GENERAL CONTRACTOR SHALL COORDINATE WITH THE HAZARDOUS MATERIALS SUBCONTRACTOR, PRIOR TO ABATEMENT ACTIVITIES TO DETERMINE THE LOCATIONS OF HAZARDOUS MATERIALS NECESSARY TO BE REMOVED.
- C. THE DRAWINGS AND NOTES DEPICTING EXISTING CONDITIONS ARE INTENDED ONLY AS A MEANS OF PROVIDING THE CONTRACTOR A GENERAL SENSE OF EXISTING SITE AND BUILDING CONDITIONS WHERE ABATEMENT WORK IS NEEDED. IT IS THE CONTRACTOR'S RESPONSIBILITY TO COORDINATE THE ABATEMENT WORK NEEDED WITH ALL OTHER CONTRACT DOCUMENTS AND FIELD VERIFY THE SIZE, QUANTITY, LOCATION, CONFIGURATION, AND CONDITIONS WHICH AFFECT THE REMOVAL OF ALL HAZARDOUS MATERIALS DESCRIBED HEREIN.
- D. ALL INTERIOR AND EXTERIOR PAINTED SURFACES AND OTHER BUILDING MATERIALS SUSPECTED TO CONTAIN LEAD SHALL BE ASSUMED TO CONTAIN LEAD UNLESS PREVIOUS LABORATORY DATA INDICATES LEAD CONTENT BELOW THE ANALYTICAL LIMIT OF DETECTION.
- E. ALL HAZARDOUS MATERIALS ABATEMENT ACTIVITIES SHALL BE COMPLETED WITHIN A NEGATIVE PRESSURE CONTAINMENT UNLESS OTHERWISE SPECIFIED.
- F. THE CLEANUP OF ANY INCIDENTAL ASBESTOS AND LEAD FOUND IN AREAS UNDERGOING ABATEMENT OF ASBESTOS AND LEAD CONTAINING MATERIALS THAT BECOME SEPARATED FROM BUILDING MATERIALS OR MECHANICAL COMPONENTS DURING THE DEMOLITION OR DISMANTLING PROCESS ARE PART OF THE HAZARDOUS MATERIALS WORK.
- G. THE CONTRACTOR SHALL CREATE WASTE STREAMS AND PERFORM ALL APPROPRIATE WASTE STREAM TESTING AS REQUIRED BY THE SPECIFICATIONS, APPLICABLE REGULATIONS, AND SELECTED DISPOSAL FACILITY. THE CONTRACTOR SHALL COLLECT COMPOSITE AND REPRESENTATIVE SAMPLES PER WASTE STREAM. TESTING IS CONSIDERED PART OF THE WORK AND SHALL BE INCLUDED IN THE CONTRACTOR'S BID. TESTING SHALL INCLUDE, BUT IS NOT LIMITED TO, TOTAL THRESHOLD LIMIT CONCENTRATION (TTL), SOLUBLE THRESHOLD LIMIT CONCENTRATION (STLC), AND TOXICITY CHARACTERISTIC LEACHING PROCEDURE (TCLP). WASTE STREAM TESTING SHALL BE COMPLETED FOR EACH IDENTIFIED WASTE STREAM AND ADDITIONALLY IDENTIFIED WASTE STREAMS THAT MAY BE DISCOVERED DURING THE WORK.
- H. ALL WORKERS SHALL BE EPA/AHERA, OSHA AND DPH (AS NECESSARY) TRAINED AND CERTIFIED AND HAVE CURRENT MEDICAL AND RESPIRATOR FIT TEST DOCUMENTATION.
- I. DEMOLITION OR HOT WORK INVOLVING LEAD-CONTAINING PAINT OR BUILDING MATERIALS SHALL BE PERFORMED BY PROPERLY TRAINED PERSONNEL IN COMPLIANCE WITH 8 CCR 1532.1, LEAD IN CONSTRUCTION STANDARD AND TITLE 17 CCR, DIVISION 1, CHAPTER 8.
- J. ALL WASTE SHALL BE TRANSPORTED AND DISPOSED OF UTILIZING APPROVED VENDORS. SUBSTITUTIONS MUST BE SUBMITTED TO THE OWNER FOR APPROVAL.

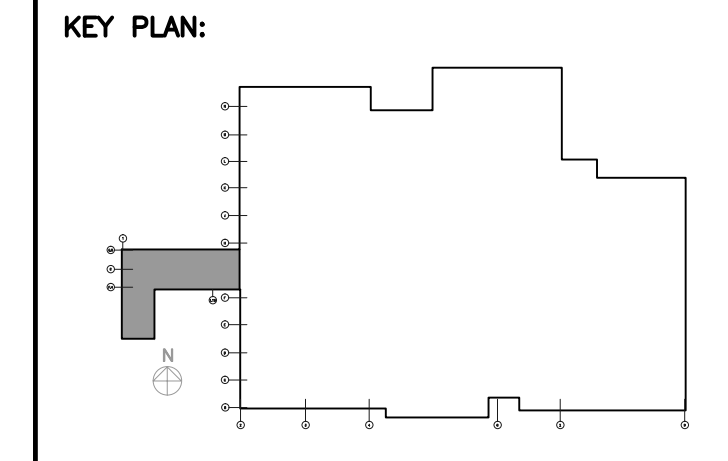
REV	DATE	DESCRIPTION	INITIAL



PROJECT:
**CONTRA COSTA COLLEGE
 APPLIED ARTS BUILDING
 CHILLER REPLACEMENT
 2600 MISSION BELL DR.
 SAN PABLO, CA 94806
 PROJECT # C-1067**

STAMP:

Kenneth M. F. Liorio



SHEET TITLE:
**CHILLER ROOM
 HAZARDOUS
 MATERIAL PLAN**

SCALE	AS NOTED	
PROJ. NO.	35144.00	
PREPARATION AND REVIEW		
PURPOSE	PERSONAL/INITIAL	DATE
DRAWN BY	MB	07/22/16
PEER REVIEW	KP	

SHEET NUMBER:
HM1.0
 NUMBER: OF: