

RELAY OUTPUT
1 2 3 4 5 6 7 8

I/O
1 2 3 4 5 6 7 8 G

IR - SERIAL OUTPUT
1 2 3 4 5 6 7 8
S G S G S G S G

COM1
G TX RX RTS CTS

COM2
G TX RX

COM3
G TX RX

MEMORY
CONTACTS DOWN

MAC ADDRESS
00107FE07DBF

USB

LAN

8504877 SN 2008JBH18323
CP3

NET 24V=2.0A
24 Y Z G
24W MAX. CLASS 2

CE

CRESTRON ELECTRONICS INC., ROCKLEIGH, NJ 07647 USA

CONTRA COSTA
COMM COLL DIST
43636

SN-SG98KJTOM7

DVC-2930M-24sr-LA-21-2

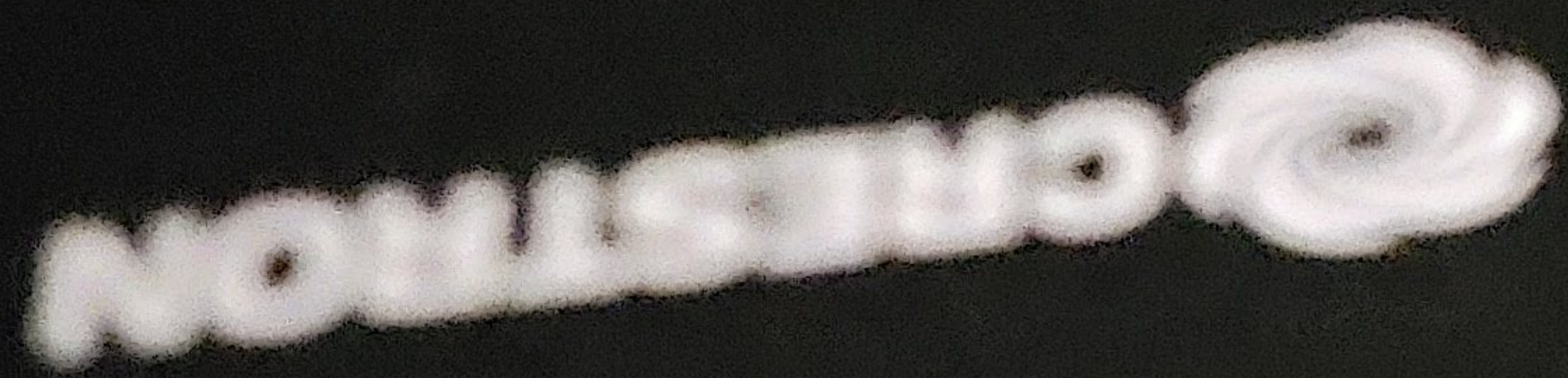
10.20.155.72

10GIG CAT6A T568B
UTP6A10BU

aruba
2930M
ROMABA



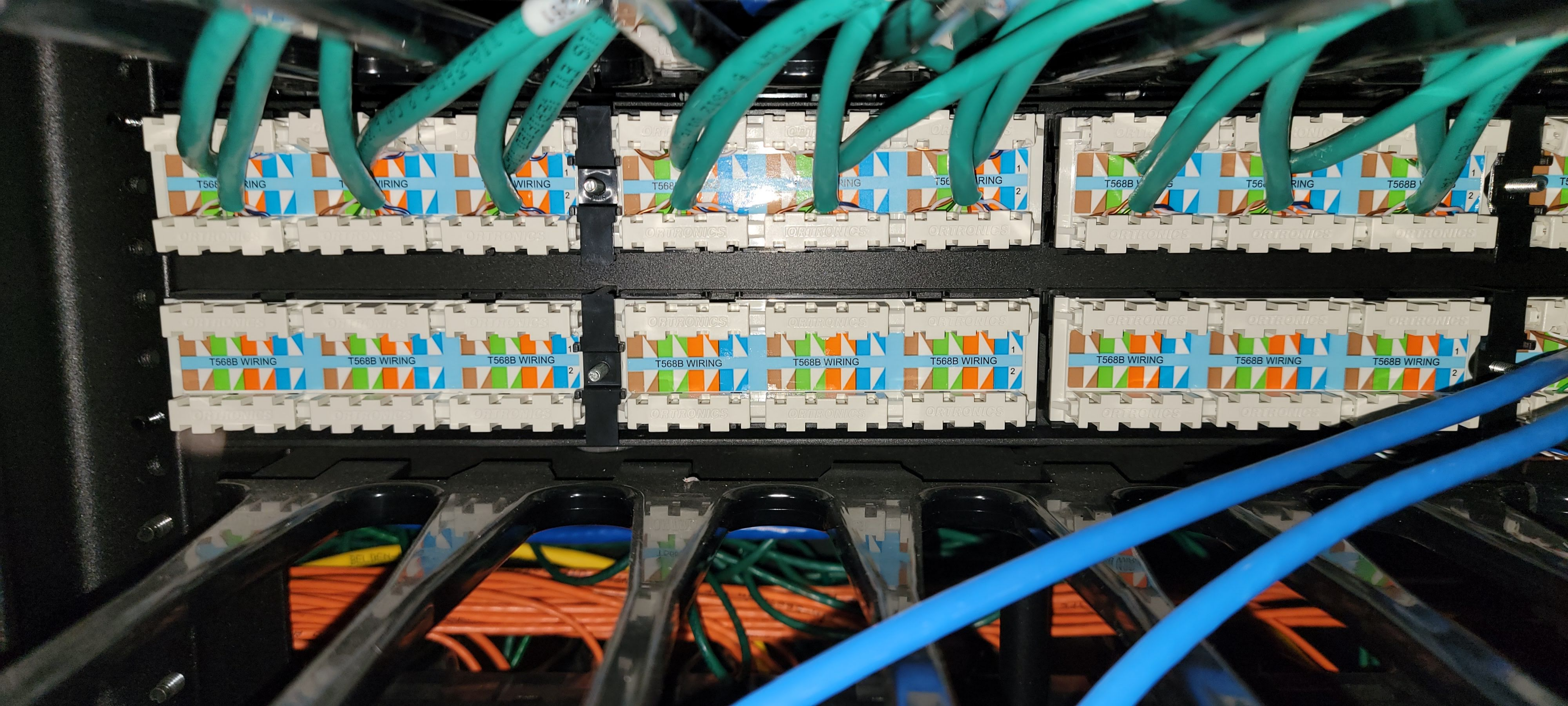


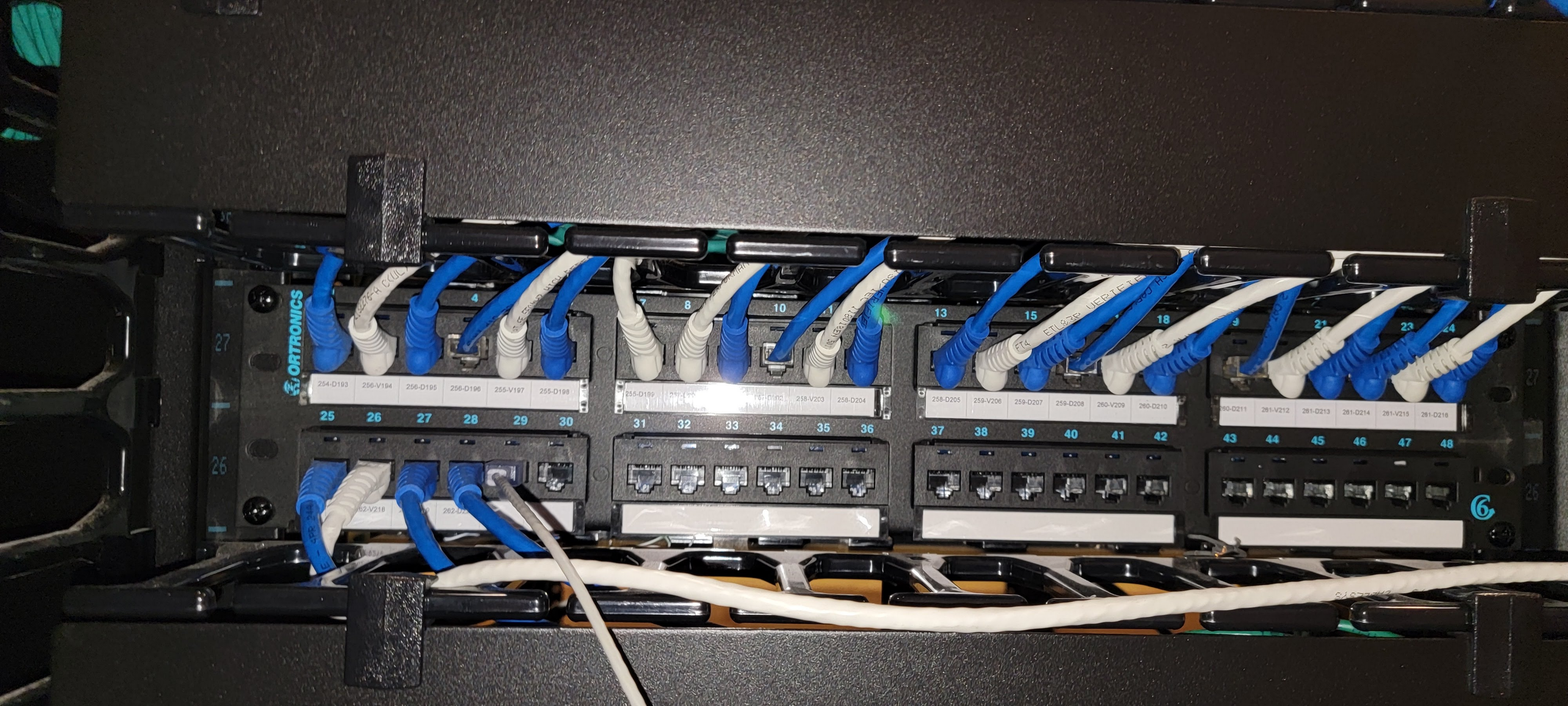


HD-TX-301-C-E

MULTIFORMAT SWITCH AND TRANSMITTER

HOTI





ORTRONICS

27

26

254-D193 255-V194 256-D195 256-D196 255-V197 255-D198

25 26 27 28 29 30

256-D199 256-V200 256-D201 256-V202 256-D203 256-D204

31 32 33 34 35 36

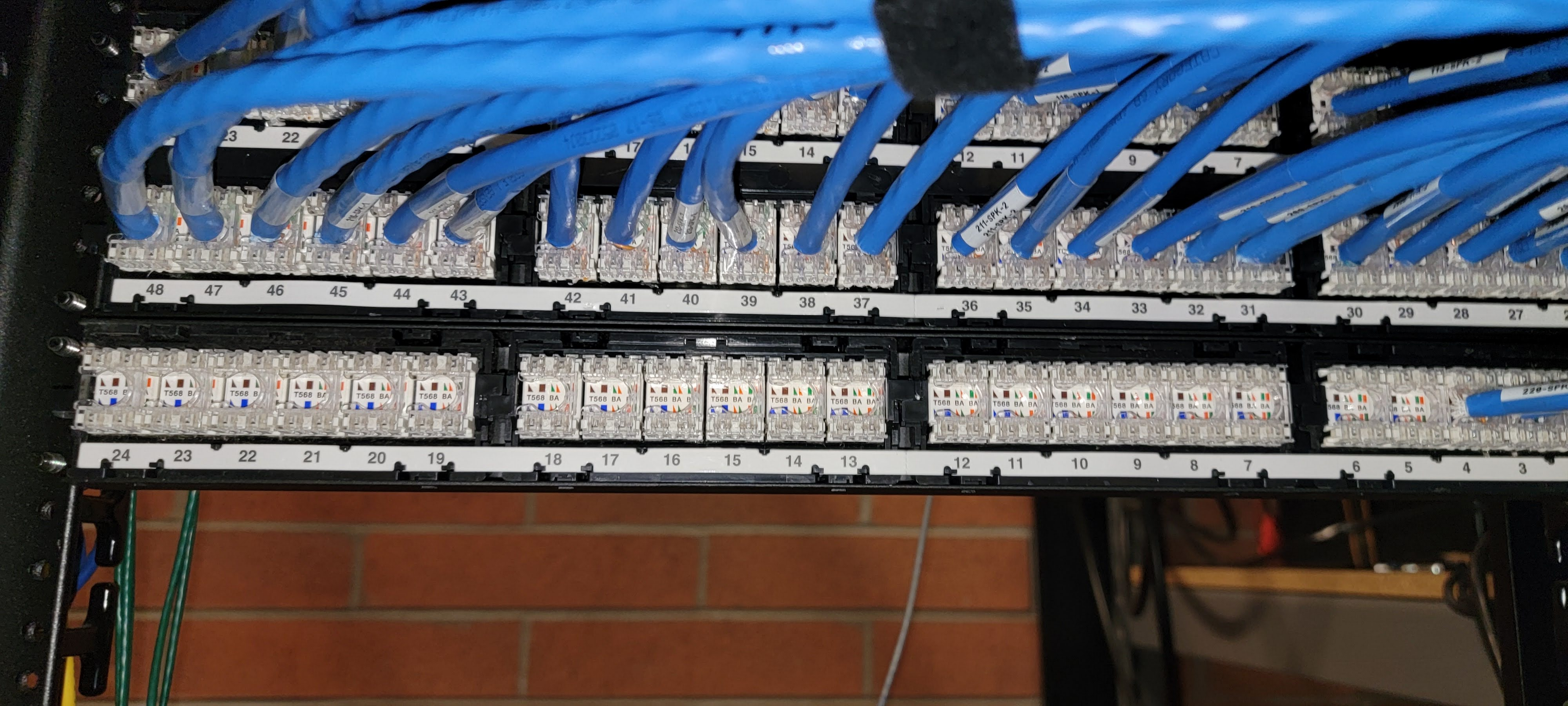
256-D205 256-V206 256-D207 256-D208 256-V209 256-D210

37 38 39 40 41 42

256-D211 256-V212 256-D213 256-D214 256-V215 256-D216

43 44 45 46 47 48

6







Panasonic

PT-RW330







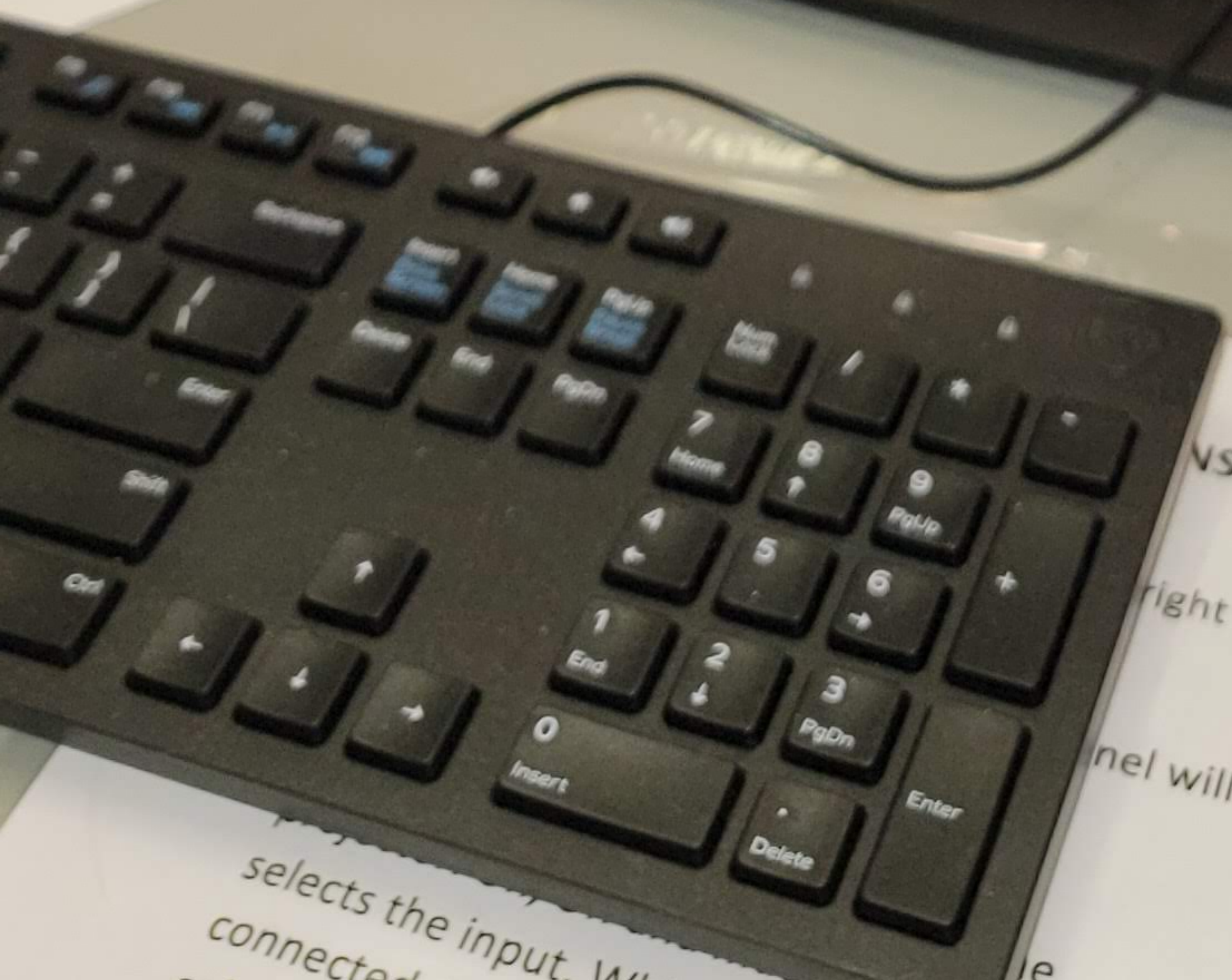
NO SMOKING

No Food or Drink Allowed

1102



ET100-25



VS
right on the
nel will

selects the input. White
connected pl
sel



Podium Instructions

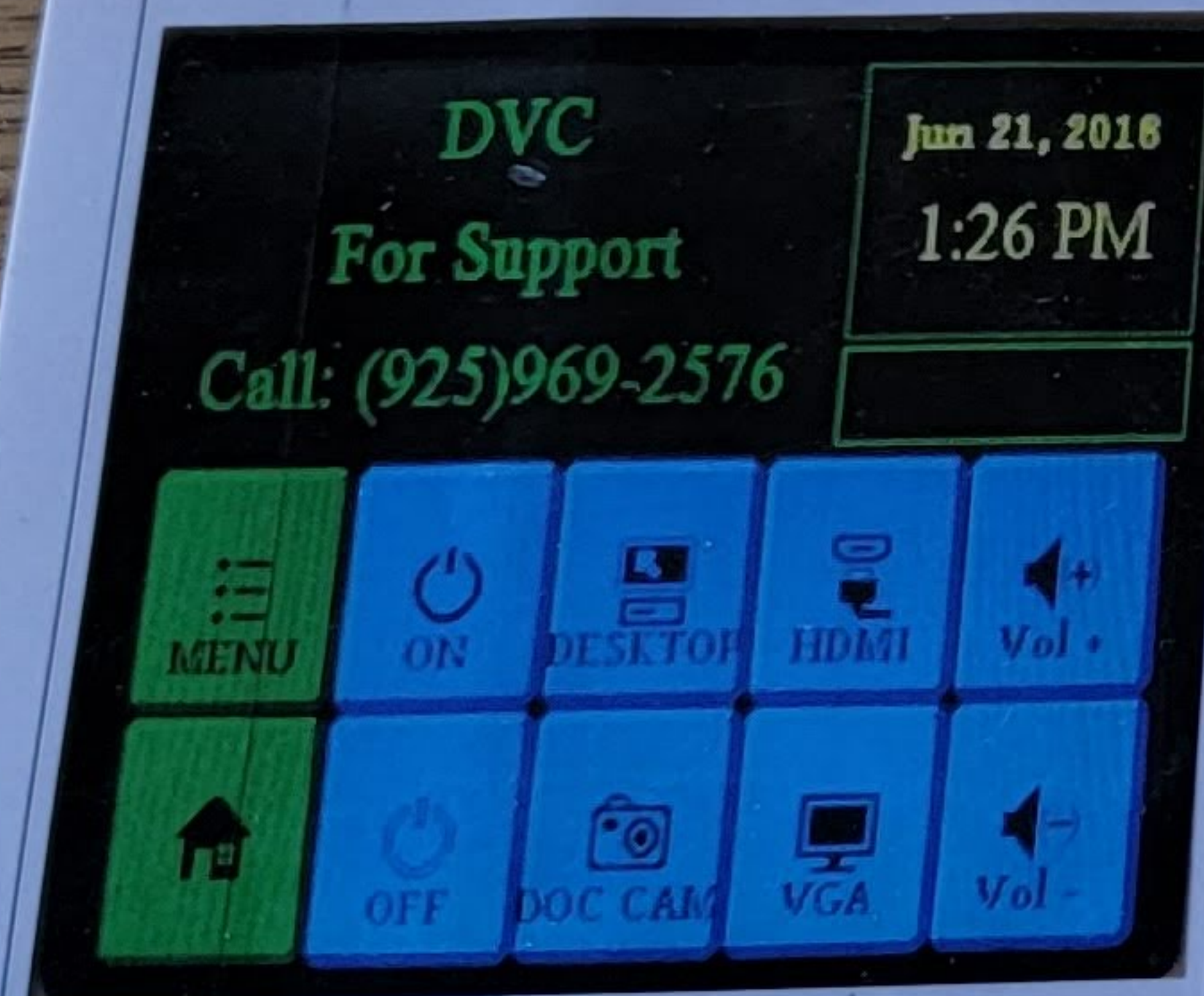
This podium allows use of the desktop computer, document camera, and/or laptop/tablet with or without projector.

Getting Started: If the touch pad shows an electronic clock, touch the pad to activate.

Once the pad is activated touch the house icon to get to the home screen if it does not automatically pop up.

To use the projector, push the "ON" button. The projector may take up to a minute to activate. At this point, you will also want to turn on the monitor and the computer (if they are not already on).

The computer may prompt you to log in. Use your AC Portal ID and password



To use the desktop computer:

Touch "desktop." If you want to show a movie using the desktop, put a DVD in the slot in the computer that is at the lower right of the podium. Once you have inserted the disk, an orange cone should appear on the computer monitor. Click the icon. When the selection box appears, choose "DVD" and then choose play.

To use the document camera:

If there is a document camera, you will find it in the cubby at the bottom of the podium. On the right hand side of the podium, there is a cabinet door. Open the cabinet and slide out the shelf. You will find two cables. Attach the power cable and the HDMI cable. Back on the touch pad, choose DOC CAM. (Make sure the projector is turned on) Turn on the document camera; the "ON" button will go from red to flashing blue to steady blue.

To use your own laptop:

Attach your laptop to the cords on top of the podium—you have a choice of VGA or HDMI depending on the connection your laptop requires. Use your wireless connection to access the internet.

To play a DVD:

Put the DVD into disc tray on the computer. go to the Desktop, then Click on VLC media player (orange and white cone) ...select Media >>>Open Disc >>>Play

To use your Tablet:

Plug in the HDMI cable to the adapter then plug into tablet, go to the panel and select "HDMI"

For the Surface Pro you will need a HDMI (female) to USBC (male)
For the IPAD – you will need a Lightning to HDMI (female)



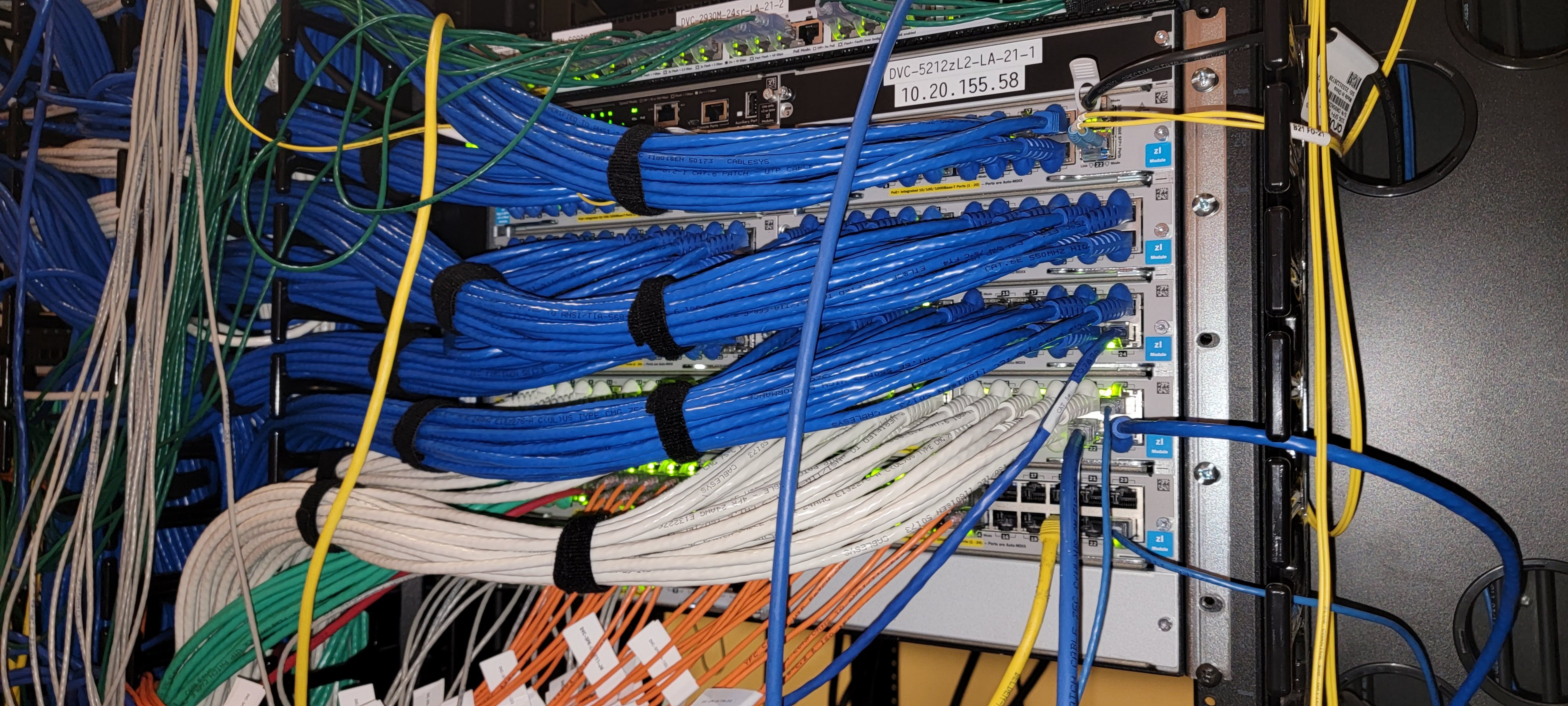
5412R
z12 Switch

J9851A



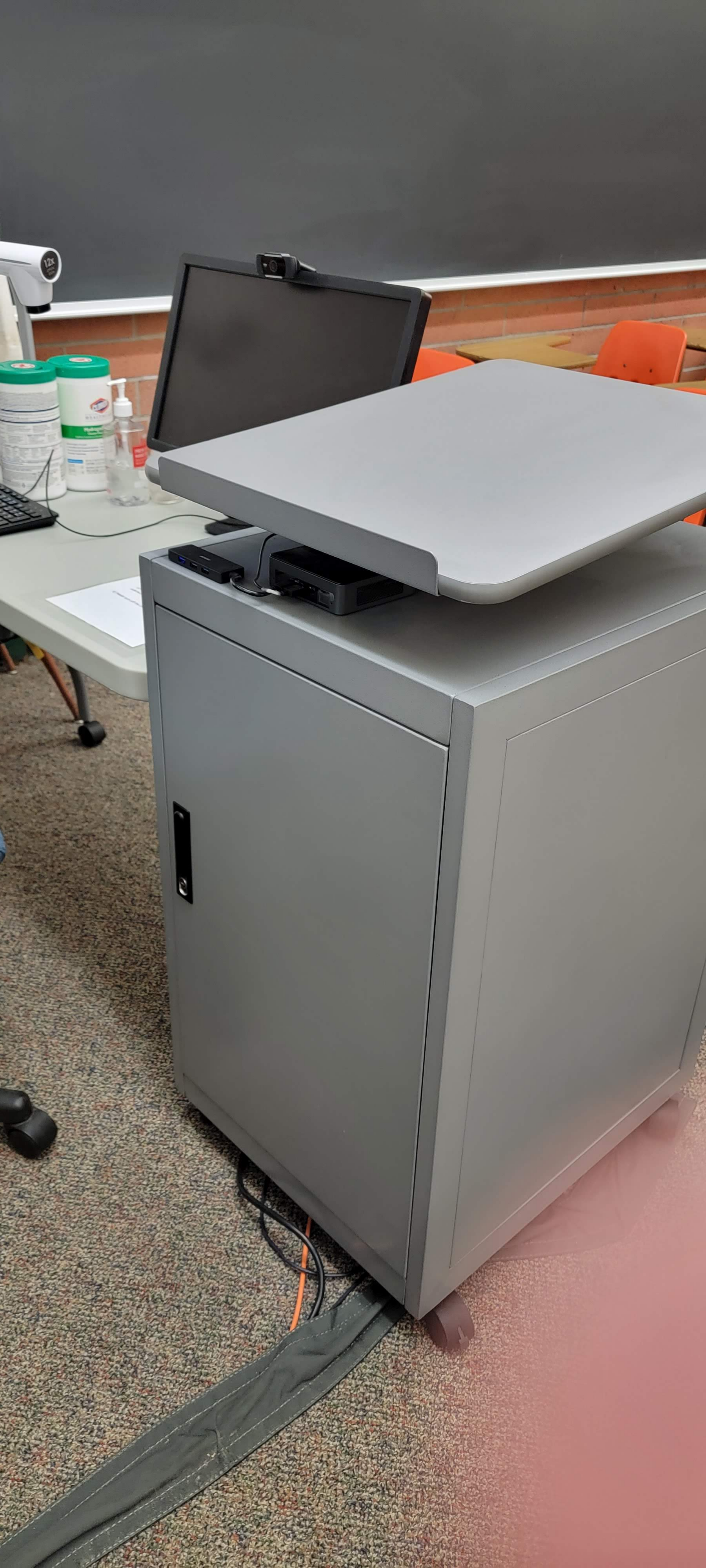
24p G


J998









A photograph of a classroom with rows of grey chairs and wooden desks. At the front of the room, there are two blackboards and a central door. A projector is currently mounted on the ceiling. Two red arrows point to specific locations on the ceiling, each with a text box. The first arrow points to a location on the left side of the ceiling, and the second arrow points to a location on the right side of the ceiling.

Mount new projector
at this location

Relocate existing
projector to this
location