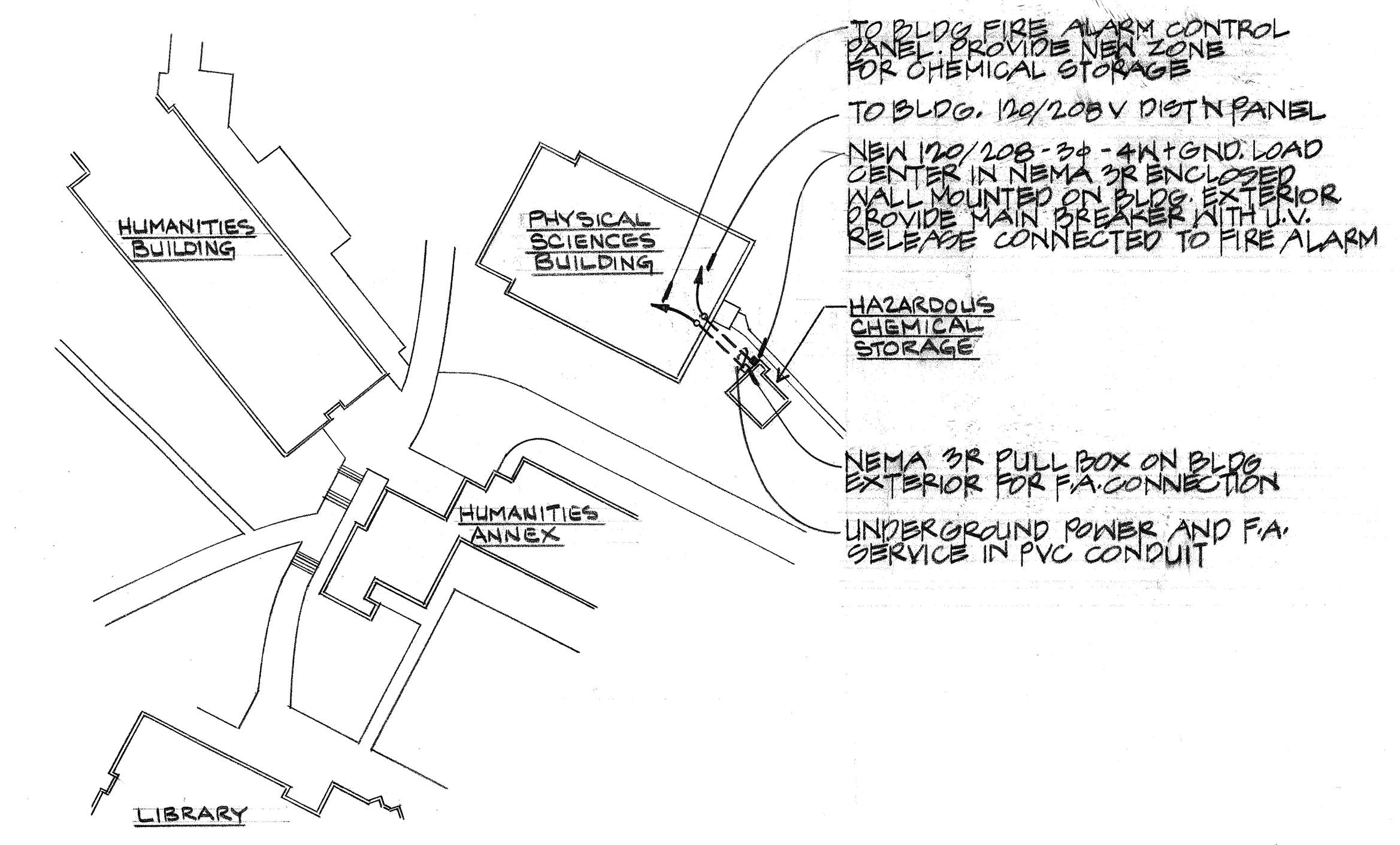
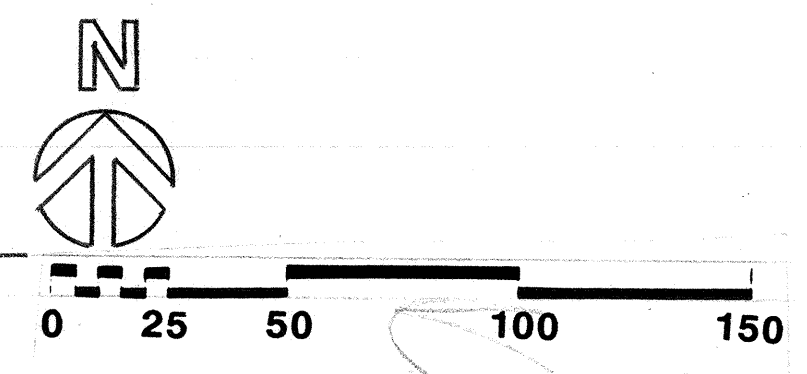
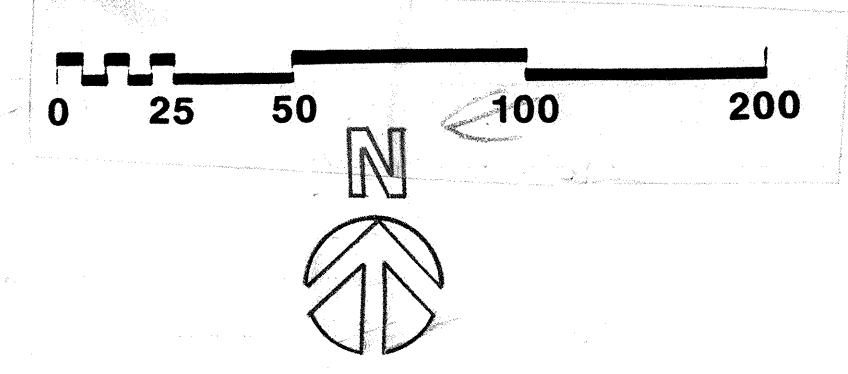


**SITE PLAN CONTRA COSTA COLLEGE  
EARLY LEARNING CENTER**



**SITE PLAN  
HAZARDOUS CHEMICAL STORAGE**



ARCHITECT  
STRUCT. ENGINEER  
CONSULT. ENGINEER

**COMETTA AND CIANFICHI**  
ARCHITECTURAL AND PLANNING FIRM  
PAUL D. CIANFICHI, ARCHITECT, A.L.A.  
ELVIN A. COMETTA, ARCHITECT  
3516 MACDONALD AVENUE • RICHMOND, CALIFORNIA 94805 • (415) 232-2637

SITE PLANS - ELECTRICAL  
EARLY LEARNING CENTER AND  
HAZARDOUS CHEMICAL STORAGE  
CONTRA COSTA COLLEGE

SHEET  
**E1**  
OF  
DATE  
JOB No.

**Bouillon  
Christofferson  
& Schairer**  
675 Alhambra Avenue  
San Jose, CA 95009  
Telephone: (408) 732-0810  
Fax: (408) 732-0822