

JOB NO. 2666.89

95 REF. EL.
(N) CONTOUR

GENERAL NOTES

PROJECT:

STATUS:

SHEET TITLE

DRAWN BY:

PROJECT NO.:	2666.89
--------------	---------

CHECKED BY _____

	DATE:
--	-------

APPL NO.:

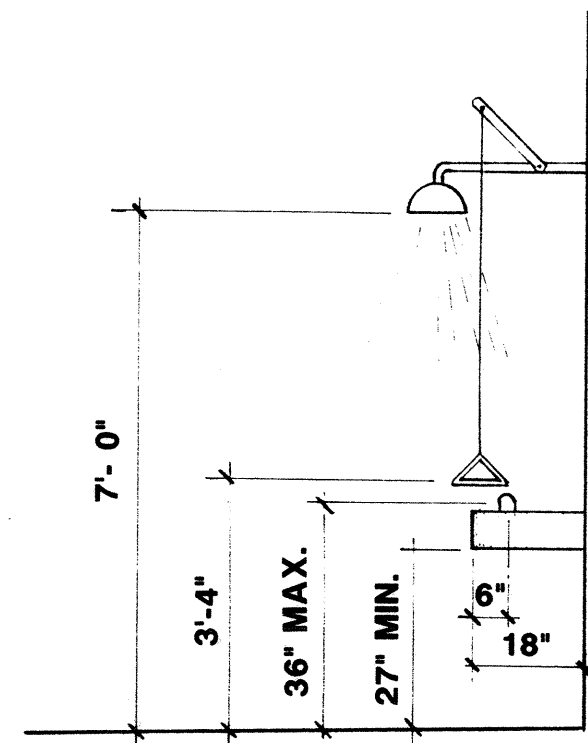
	SHEET:
--	--------

DATA NO.:

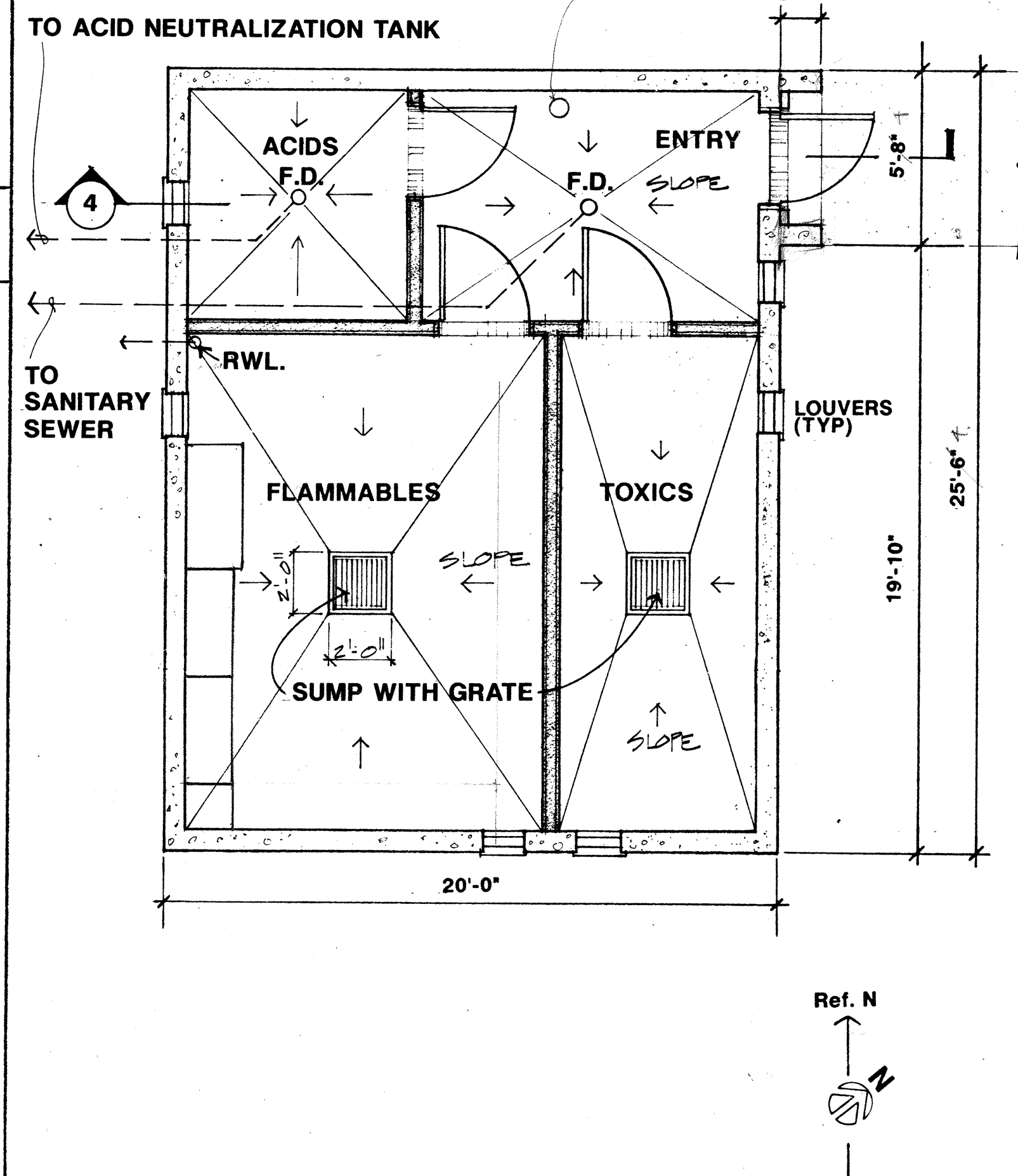
[illegible]

OF:

OC-101 JANUARY 199

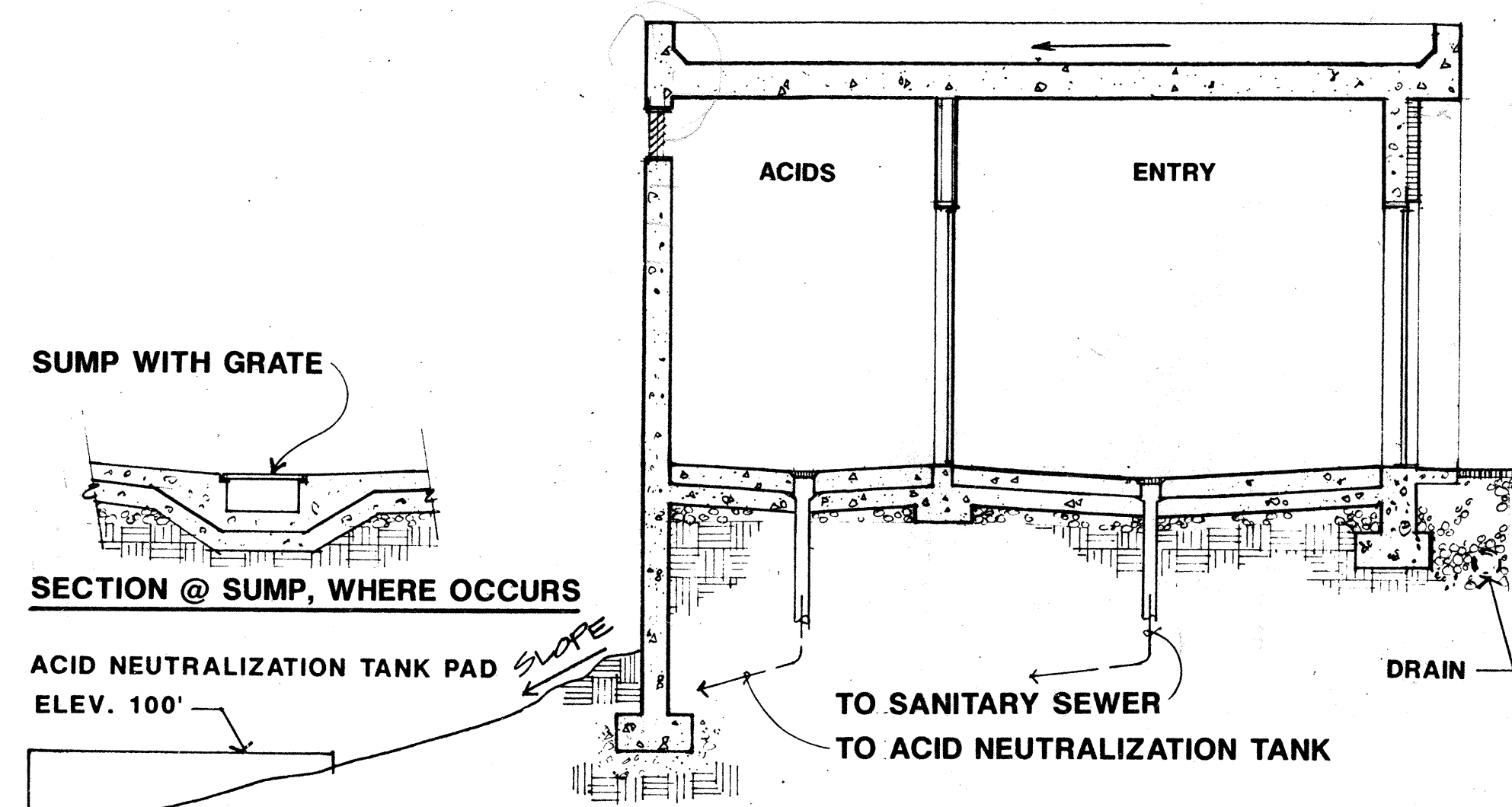


5 TYP. EYE - WASH AND DRENCH SHOWER
3/8" = 1'-0"

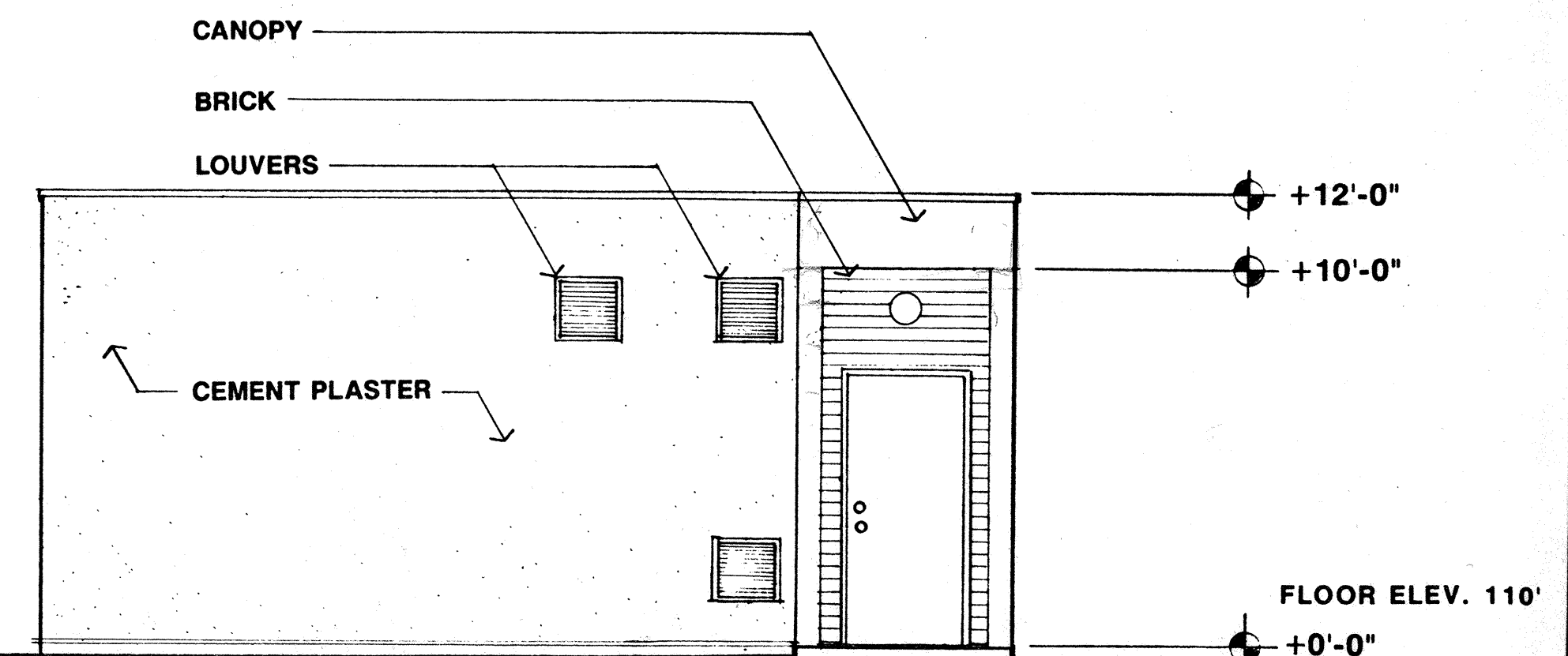


3 FLOOR PLAN
1/4" = 1'-0"

1 SITE AND UTILITIES PLAN
1" = 30'-0"



4 SECTION
1/4" = 1'-0"



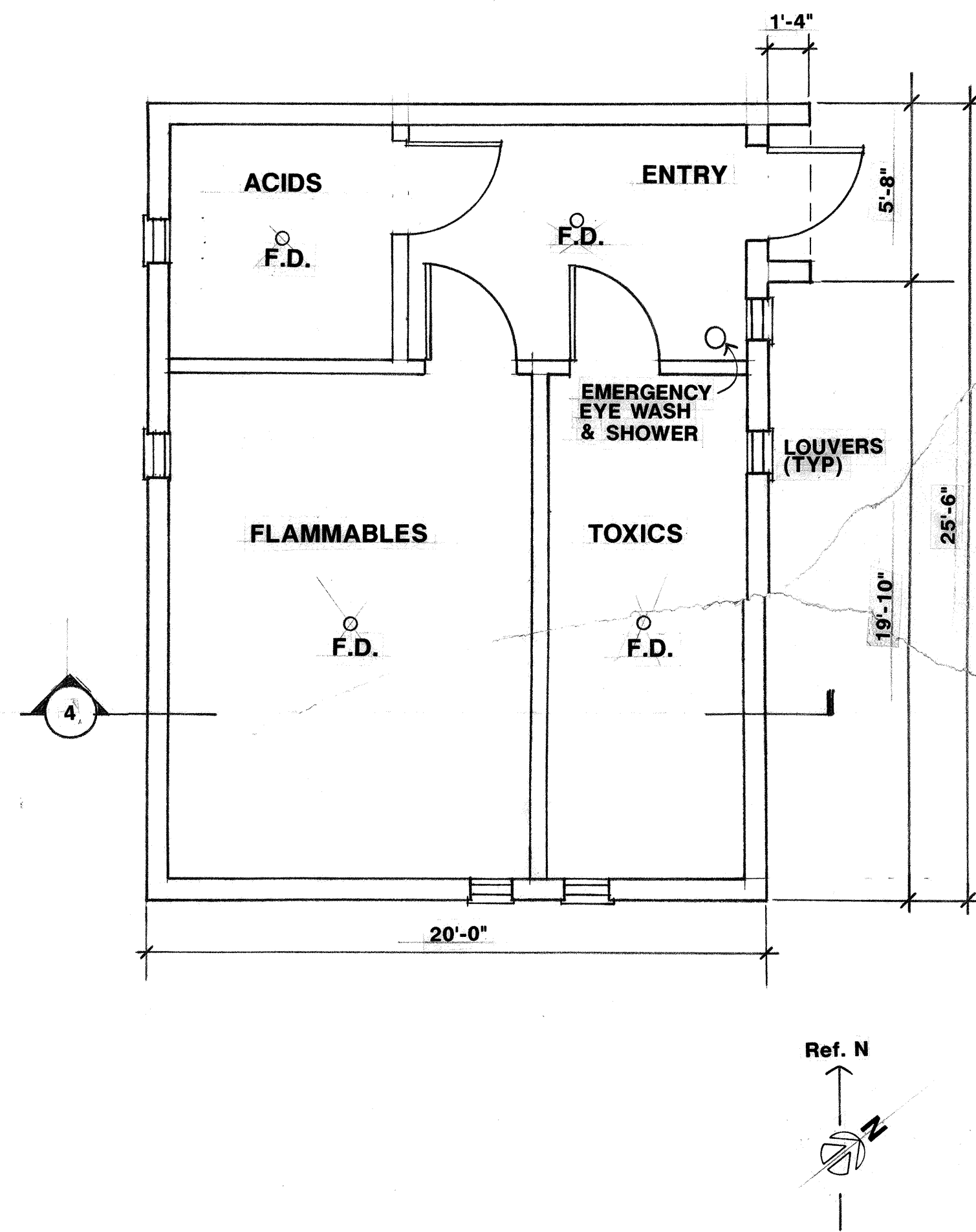
2 EAST ELEVATION
1/4" = 1'-0"

ARCHITECT
STRUCT. ENGINEER
CONSULT. ENGINEER

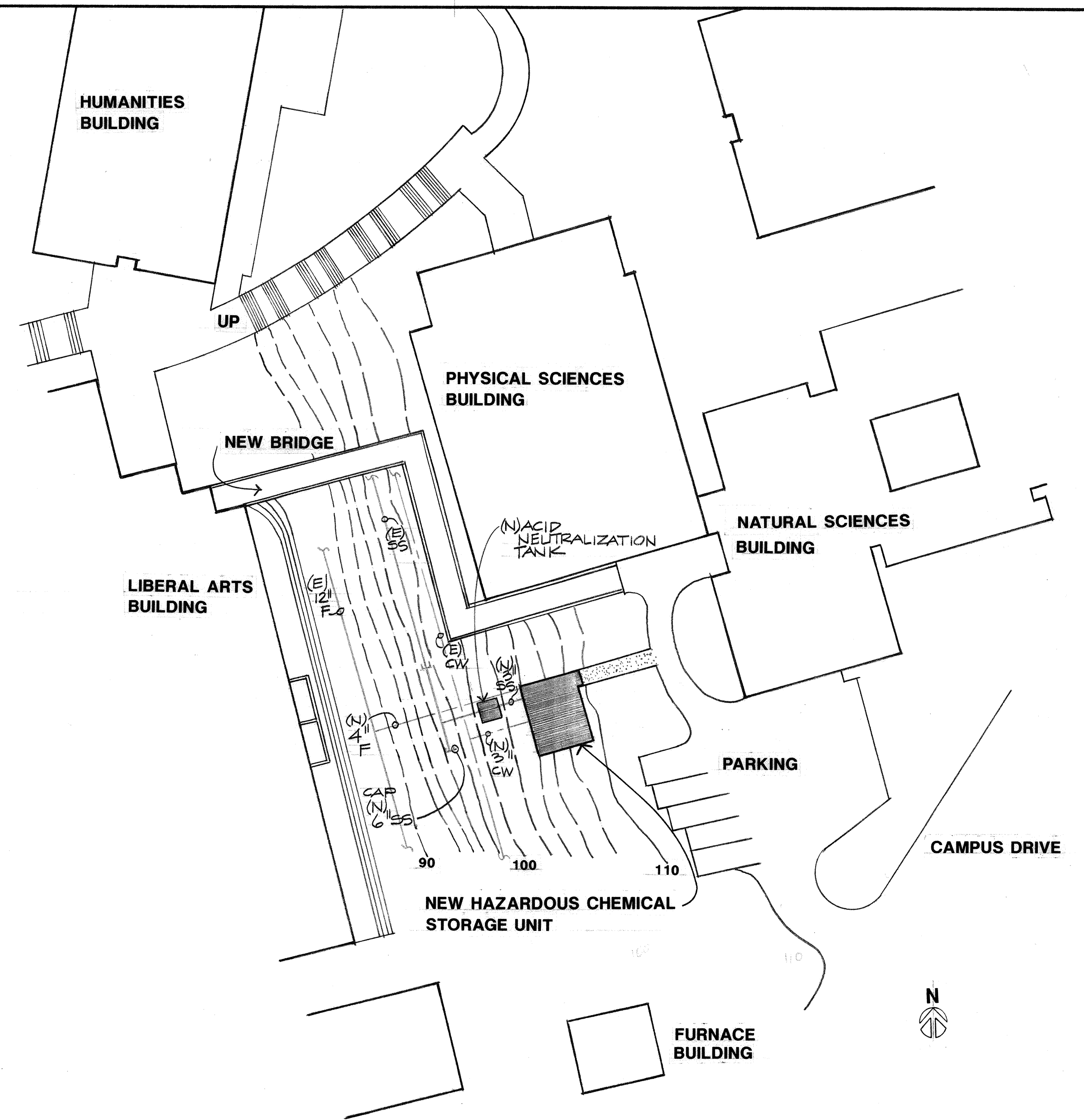
COMETTA AND CIANFICHI
ARCHITECTURAL AND PLANNING FIRM
PAUL D. CIANFICHI, ARCHITECT, A.I.A.
3516 MACDONALD AVENUE • RICHMOND, CALIFORNIA 94805 • (415) 282-2637

PRELIMINARY
CONTRA COSTA COLLEGE
HAZARDOUS CHEMICAL STORAGE UNIT
SAN PABLO, CA 94806

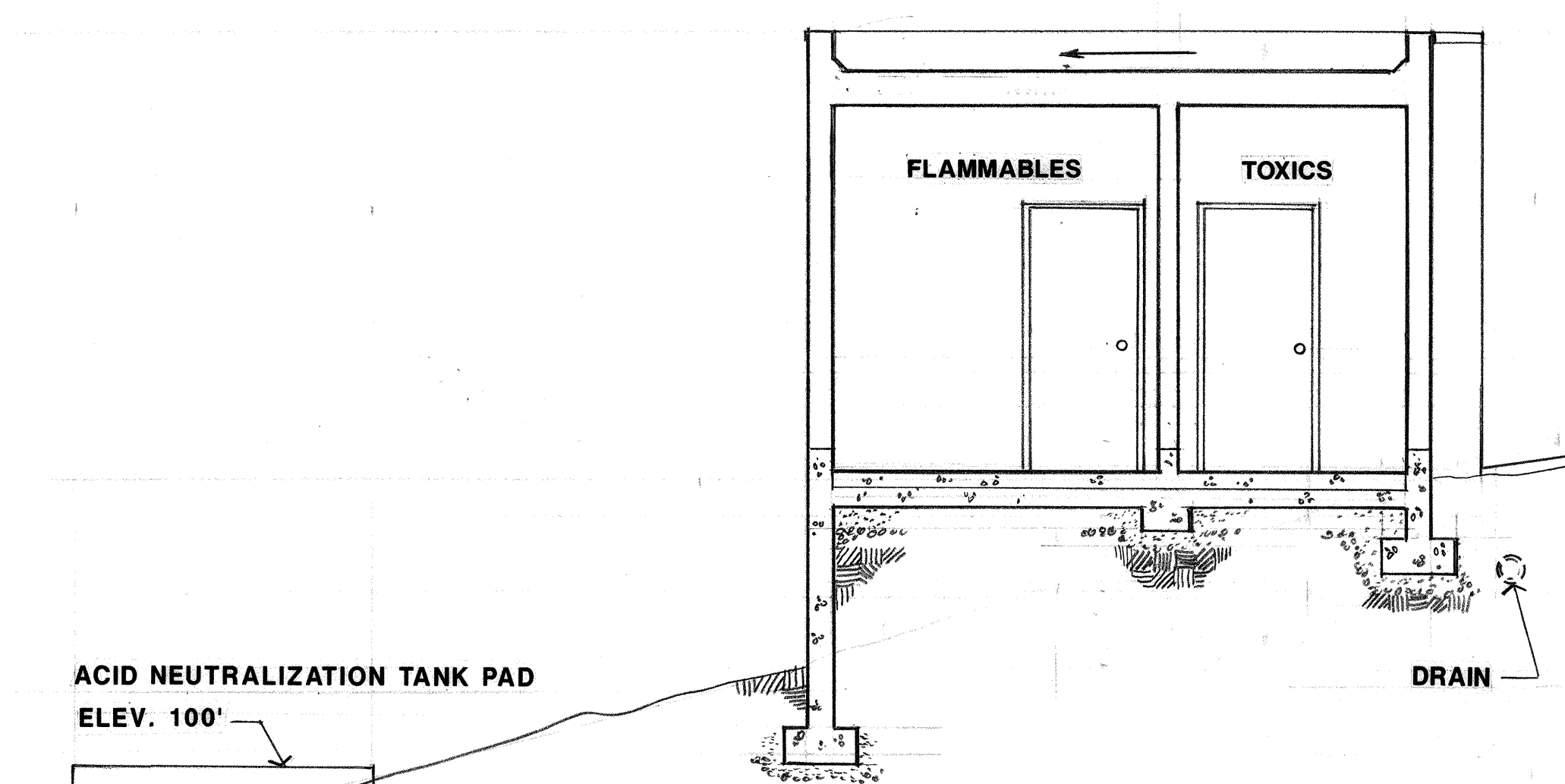
SHEET
A1
DATE
SEPT. 24, 1991
JOB No.
2666.89



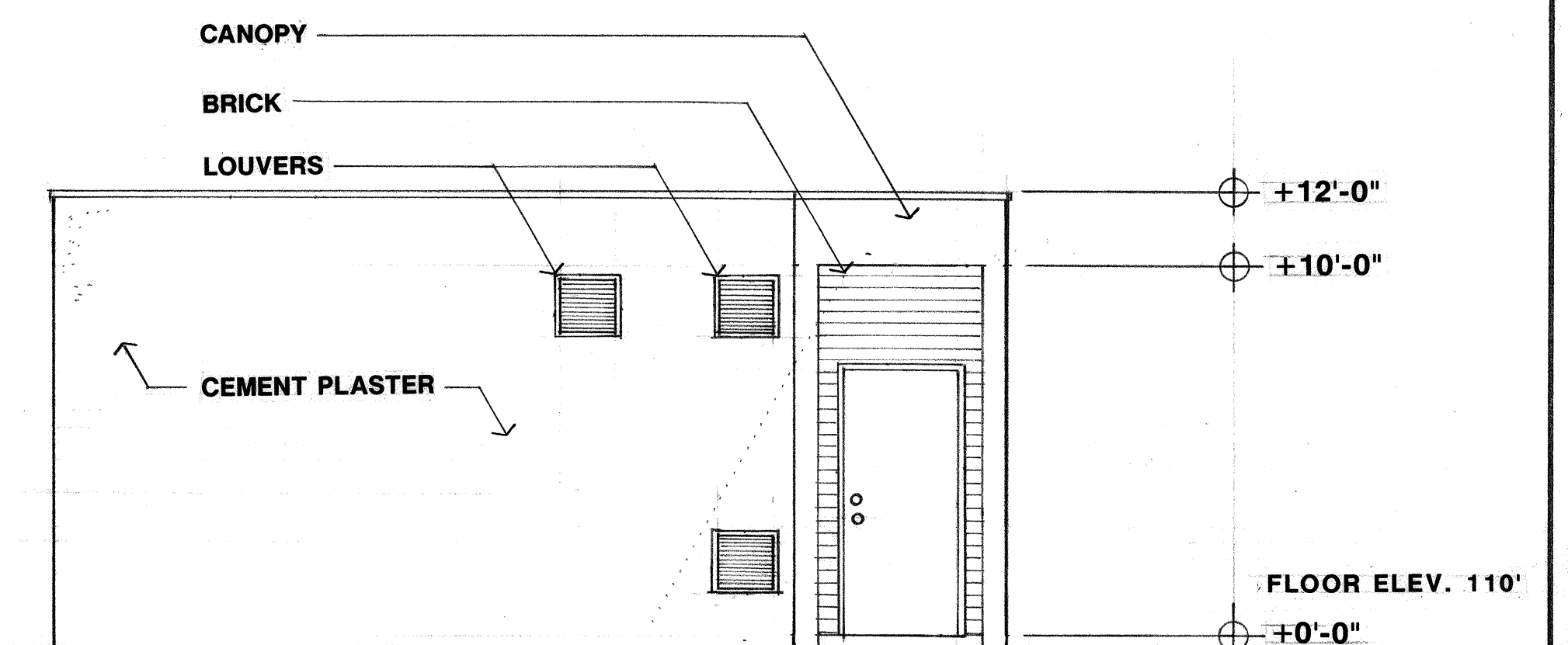
2 FLOOR PLAN
HAZARDOUS CHEMICAL STORAGE UNIT
1/4" = 1'-0"



1 SITE AND UTILITIES PLAN
HAZARDOUS CHEMICAL STORAGE UNIT
1" = 30'-0"



4 SECTION
HAZARDOUS CHEMICAL STORAGE UNIT
1/4" = 1'-0"



3 EAST ELEVATION
HAZARDOUS CHEMICAL STORAGE UNIT
1/4" = 1'-0"

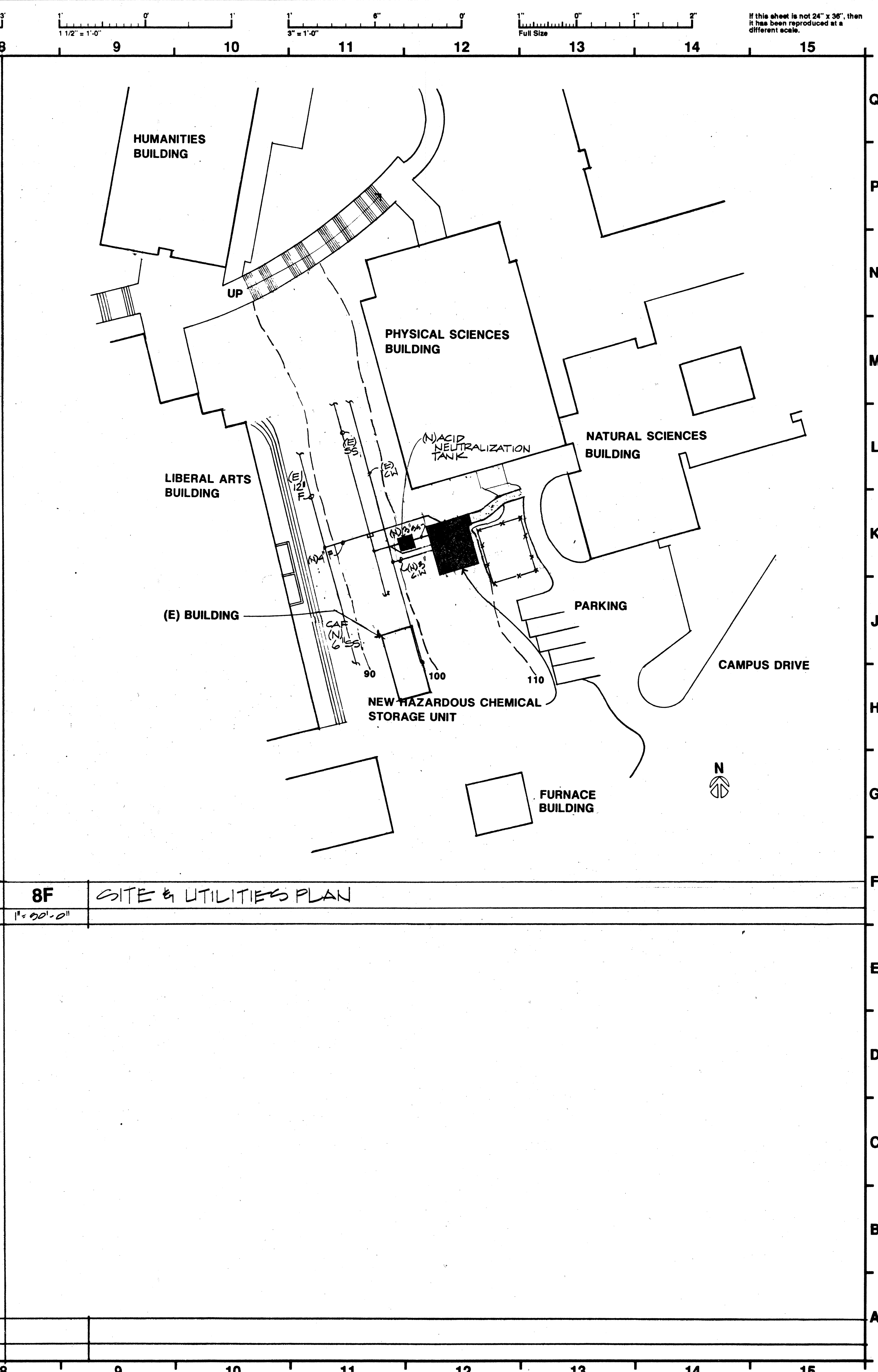
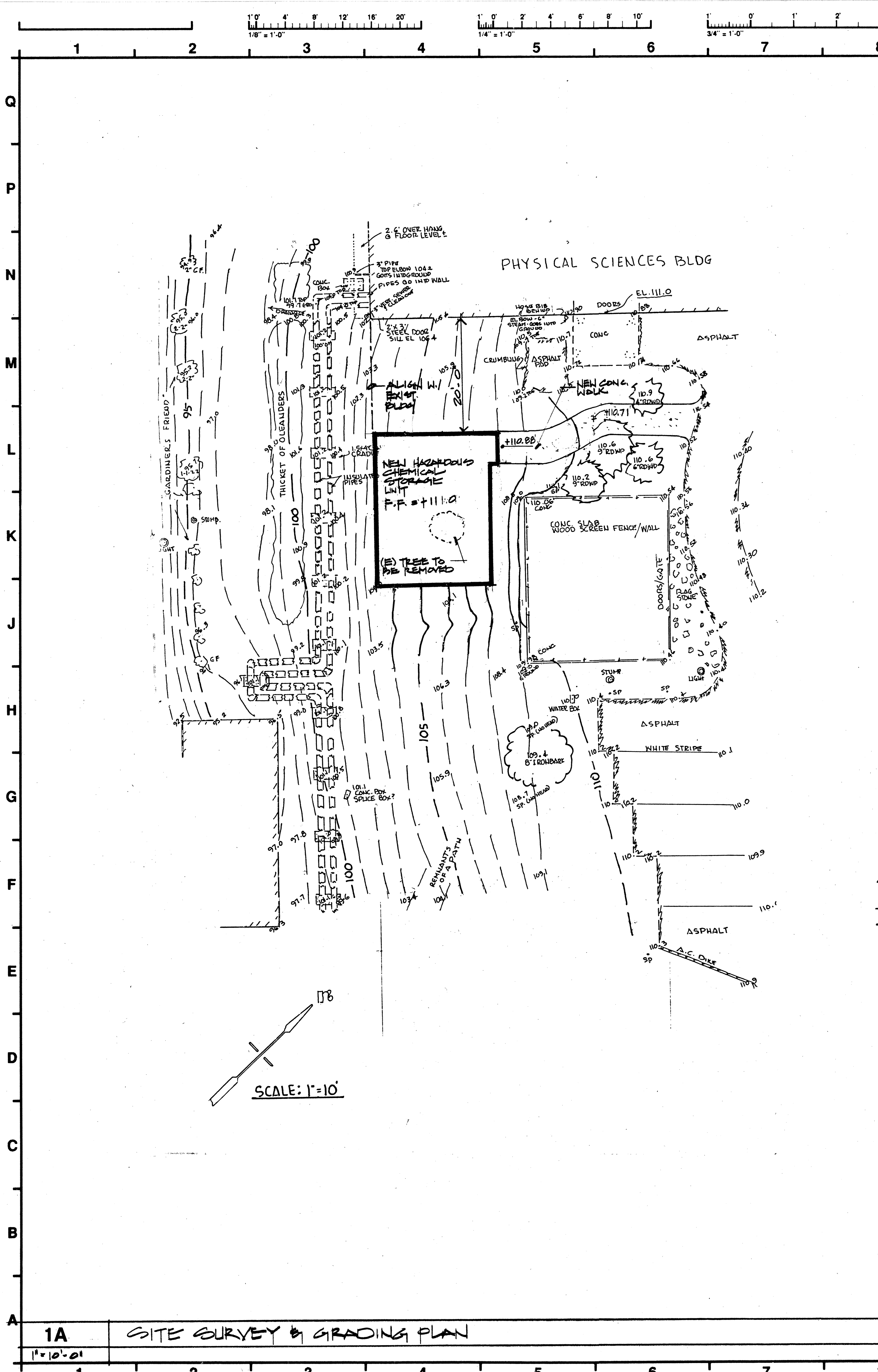
ARCHITECT
STRUCT. ENGINEER
CONSULT. ENGINEER

COMETTA AND CIANFICHI
ARCHITECTURAL AND PLANNING FIRM
PAUL D. CIANFICHI, ARCHITECT, A.I.A.
3516 MACDONALD AVENUE • RICHMOND, CALIFORNIA 94805 • (415) 232-2637

PRELIMINARY
CONTRA COSTA COLLEGE
HAZARDOUS CHEMICAL STORAGE UNIT
SAN PABLO, CA 94806

SHEET
A1
DATE
SEPT. 6, 1991
JOB No.
2666.89

Progress print
issue date



COMETTA / CIANFICHI

CONSULTANT:

ARCHITECT:

C/C
COMETTA / CIANFICHI
ARCHITECTURE • PLANNING

3516 Macdonald Avenue
Richmond, CA 94805-2113
Telephone: (510) 232-2637
Fax Number: (510) 232-7281

PROJECT:

**HAZARDOUS CHEMICAL
STORAGE UNIT**

CONTRA COSTA COLLEGE
2600 MISSION BELL DR.
SAN PABLO, CA. 94806

STATUS:

REVISIONS: (Δ indicates revisions made to this sheet.)

NO.	DATE	NO.	DATE

SHEET TITLE:

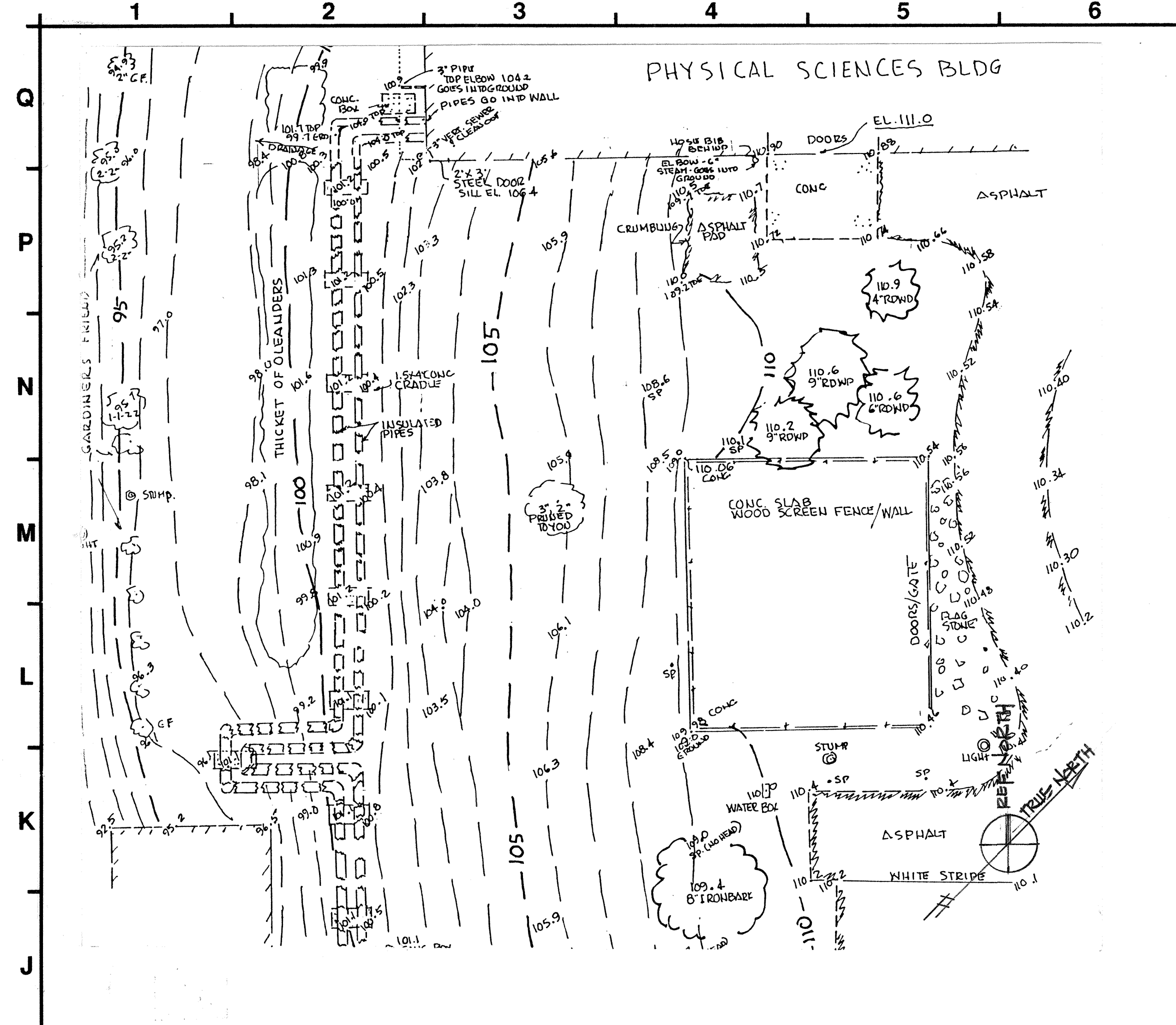
**SITE UTILITIES PLAN/
GRADING PLAN**

DRAWN BY:	PROJECT NO.:
	2666.89

CHECKED BY:	DATE:

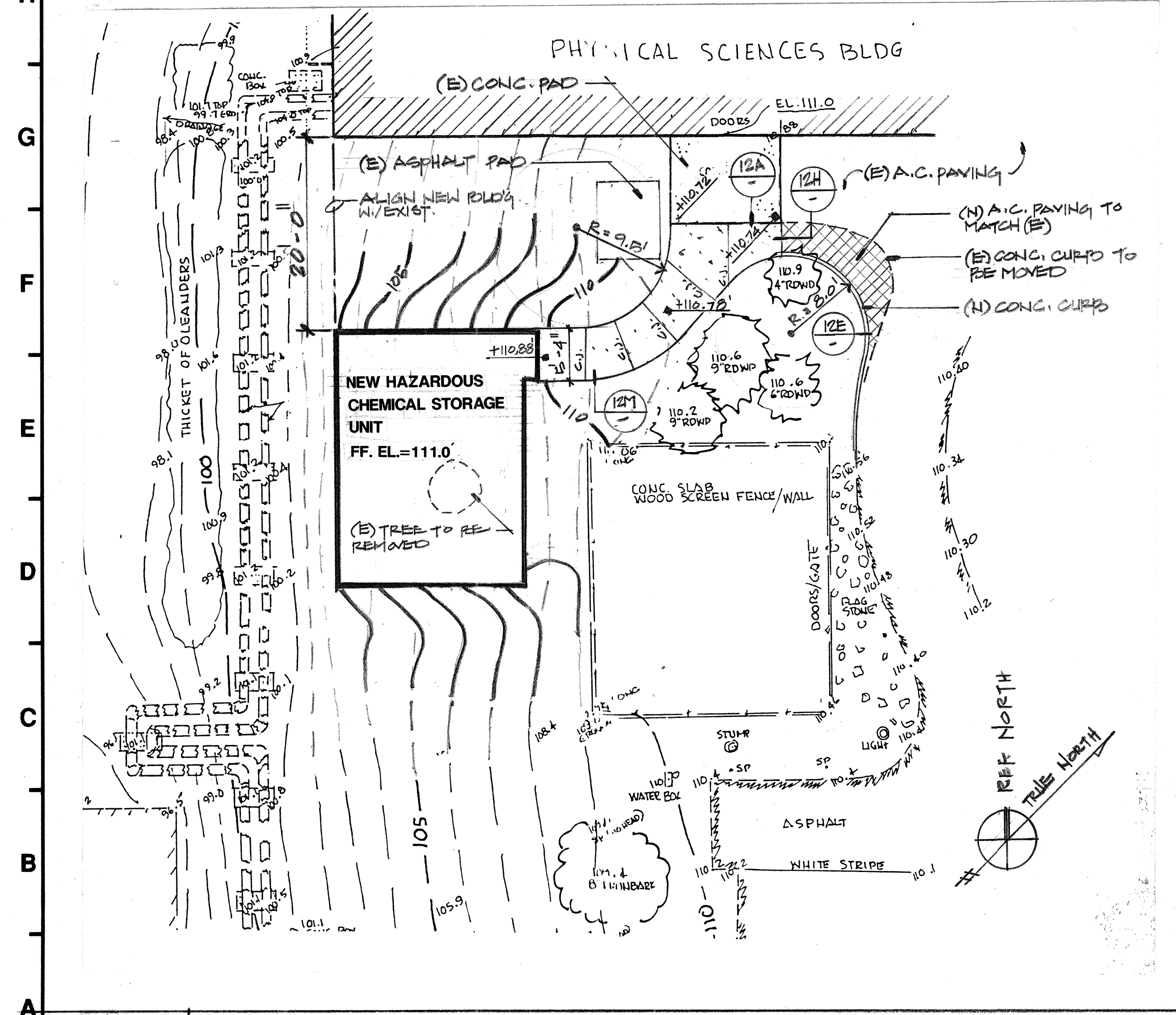
APPL. NO.:	SHEET:
	A1

DATA NO.:	NO. OF



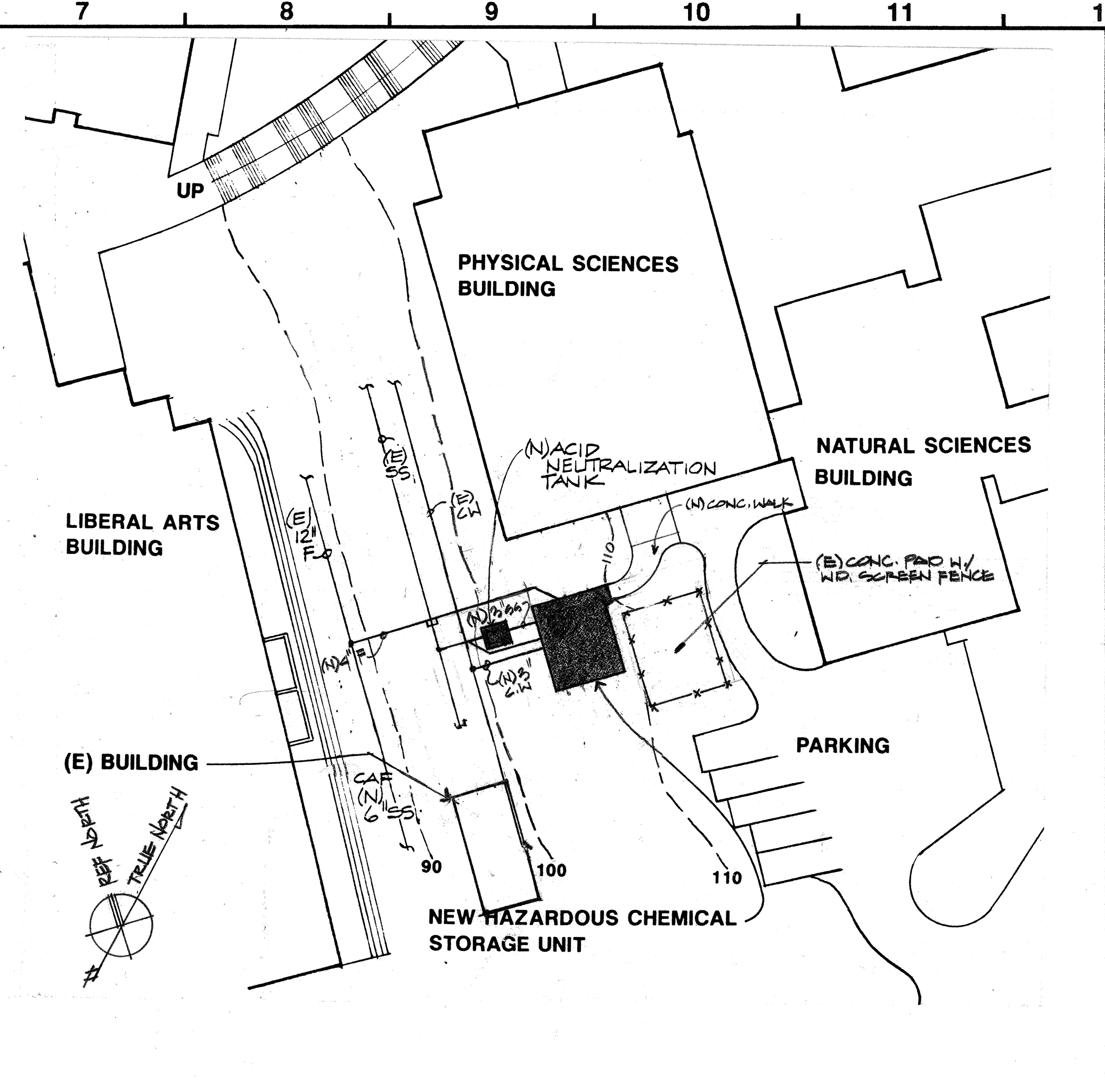
1H EXIST. CONDITIONS SURVEY

1" = 1'-0"



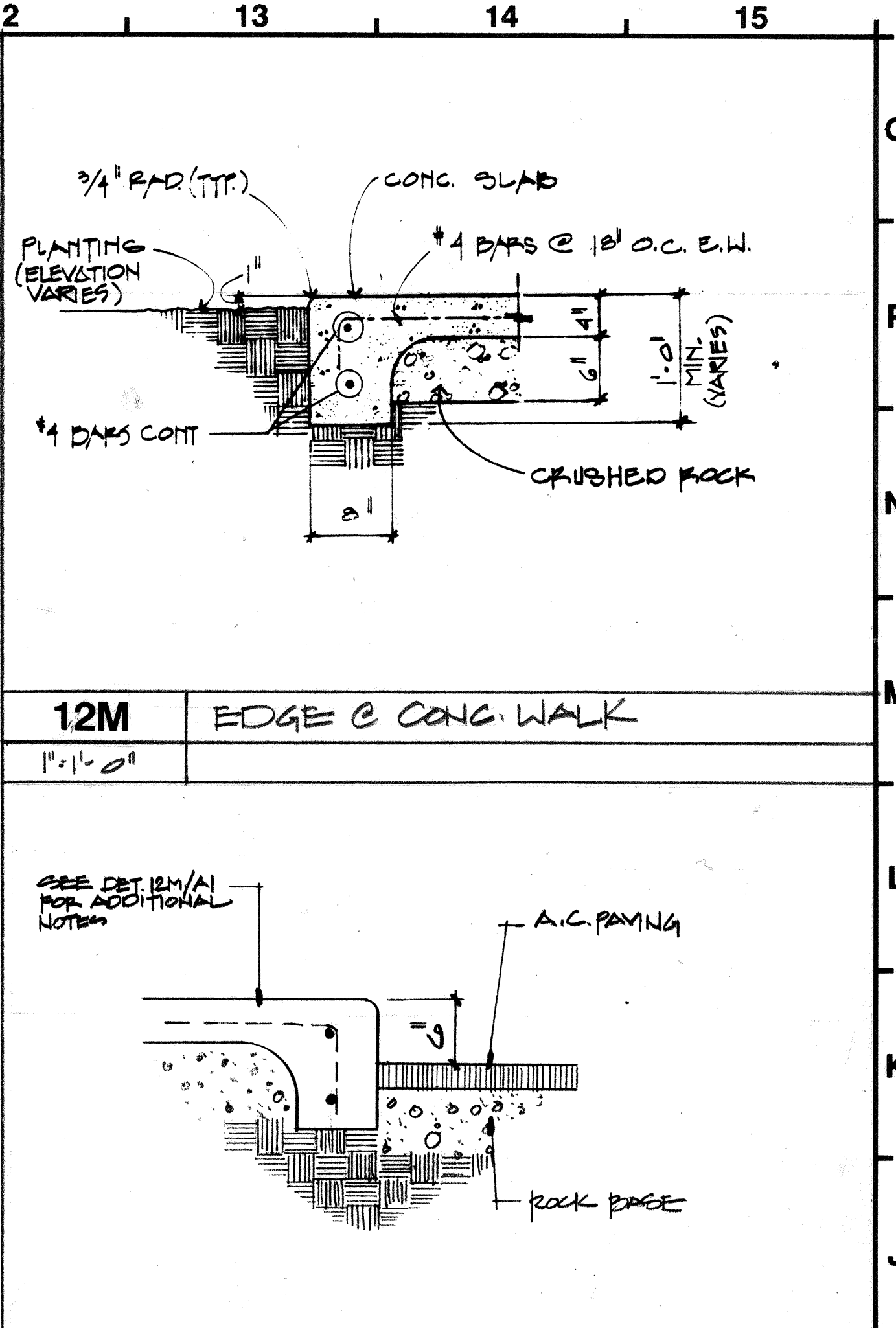
1A SITE GRADING PLAN

1" = 1'-0"



7H SITE UTILITIES PLAN

1" = 1'-0"



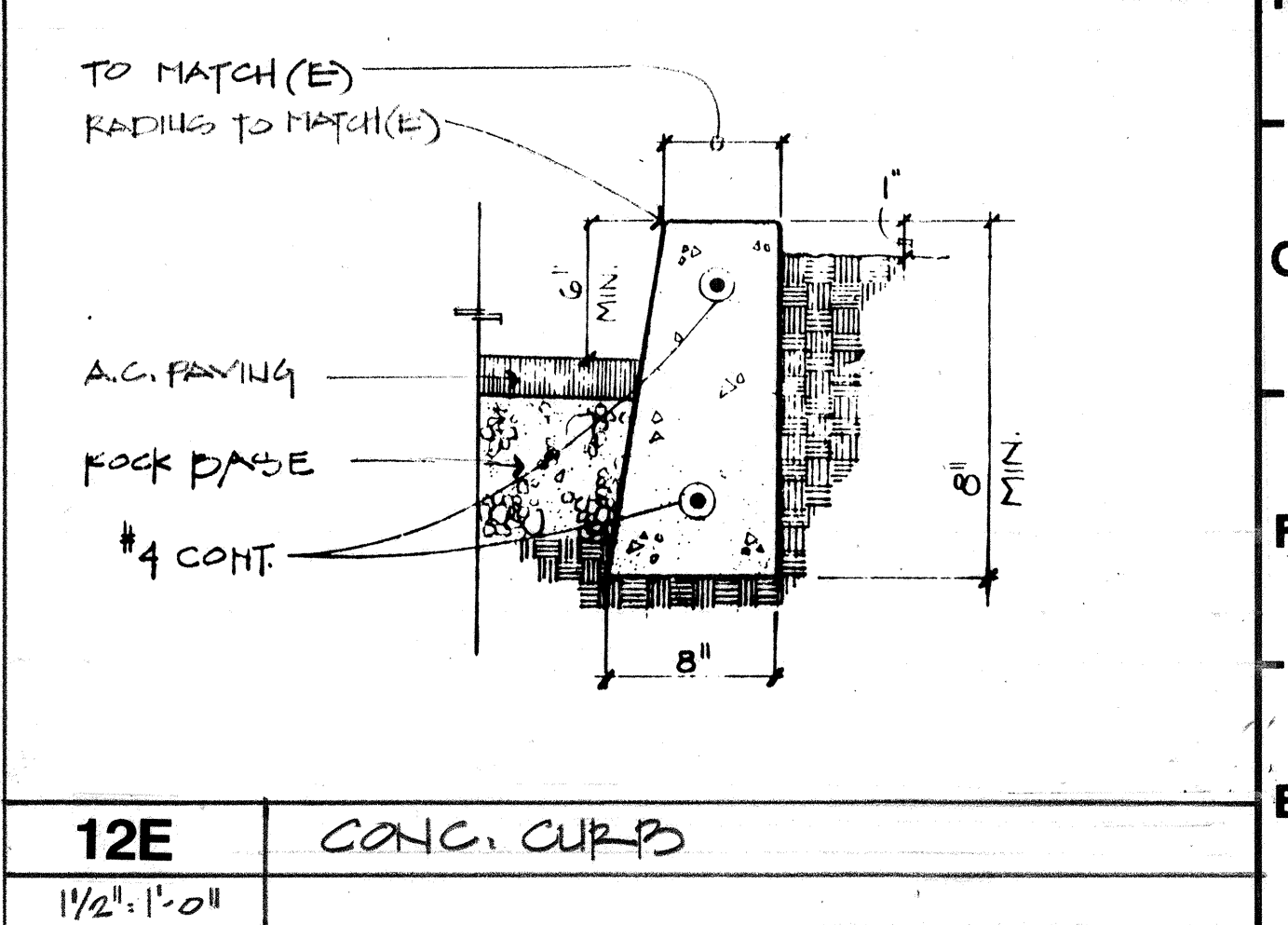
12M EDGE C CONC. WALK

1" = 1'-0"



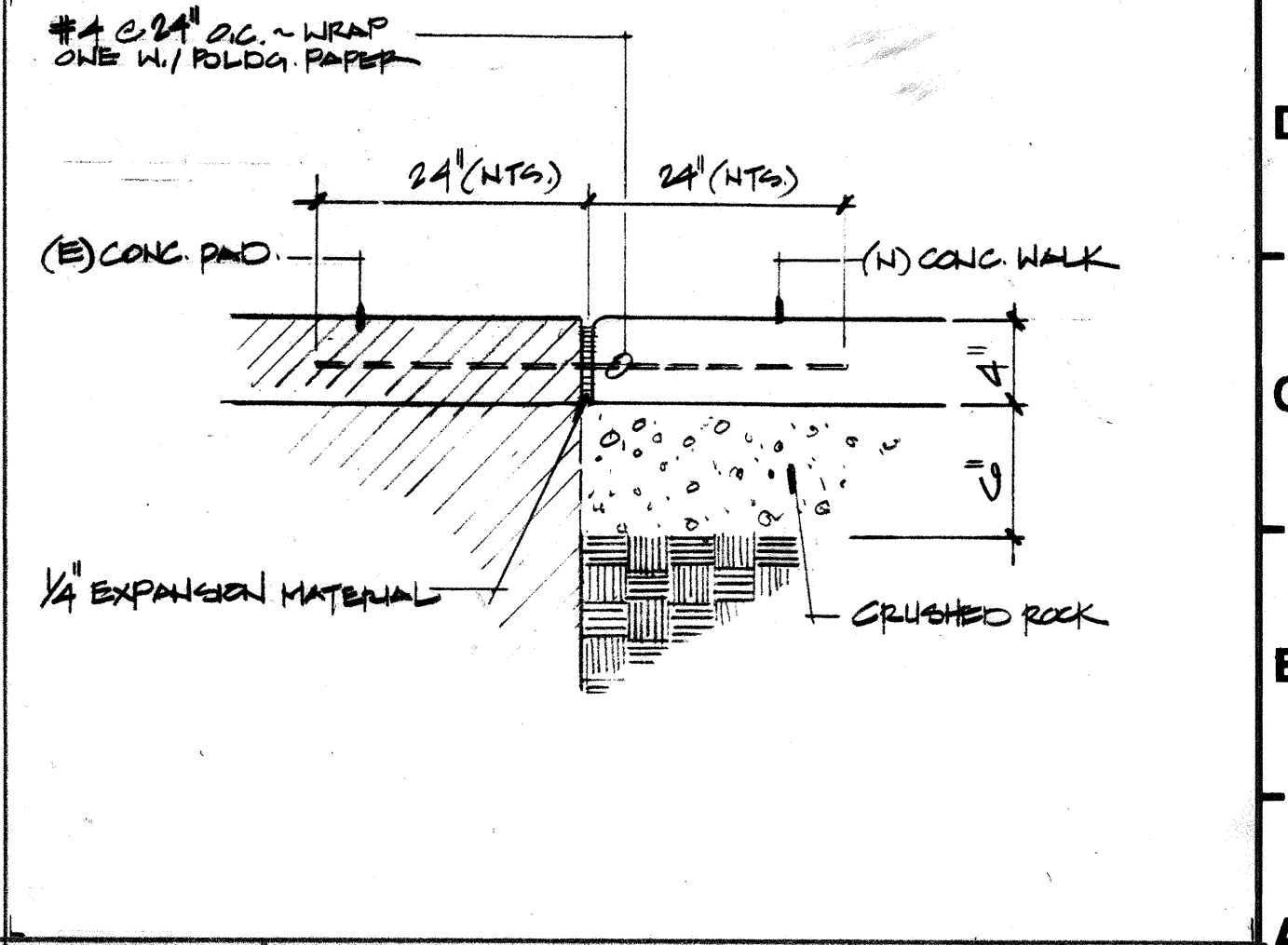
12H EDGE C CONC. WALK

1" = 1'-0"



12E CONC. CURB

1 1/2" = 1'-0"



12A CONC. WALK

1 1/2" = 1'-0"

COMETTA / CIANFICHI

ARCHITECT: COMETTA / CIANFICHI
ARCHITECTURE • PLANNING

3516 Macdonald Avenue
Richmond, CA 94805-2113
Telephone: (510) 232-2637
Fax Number: (510) 232-7281

PROJECT: HAZARDOUS CHEMICAL STORAGE UNIT

CONTRA COSTA COLLEGE
2600 MISSION BELL DR.
SAN PABLO, CA. 94806

STATUS:

REVISIONS: (Δ indicates revisions made to this sheet.)

NO.	DATE	NO.	DATE

SHEET TITLE:

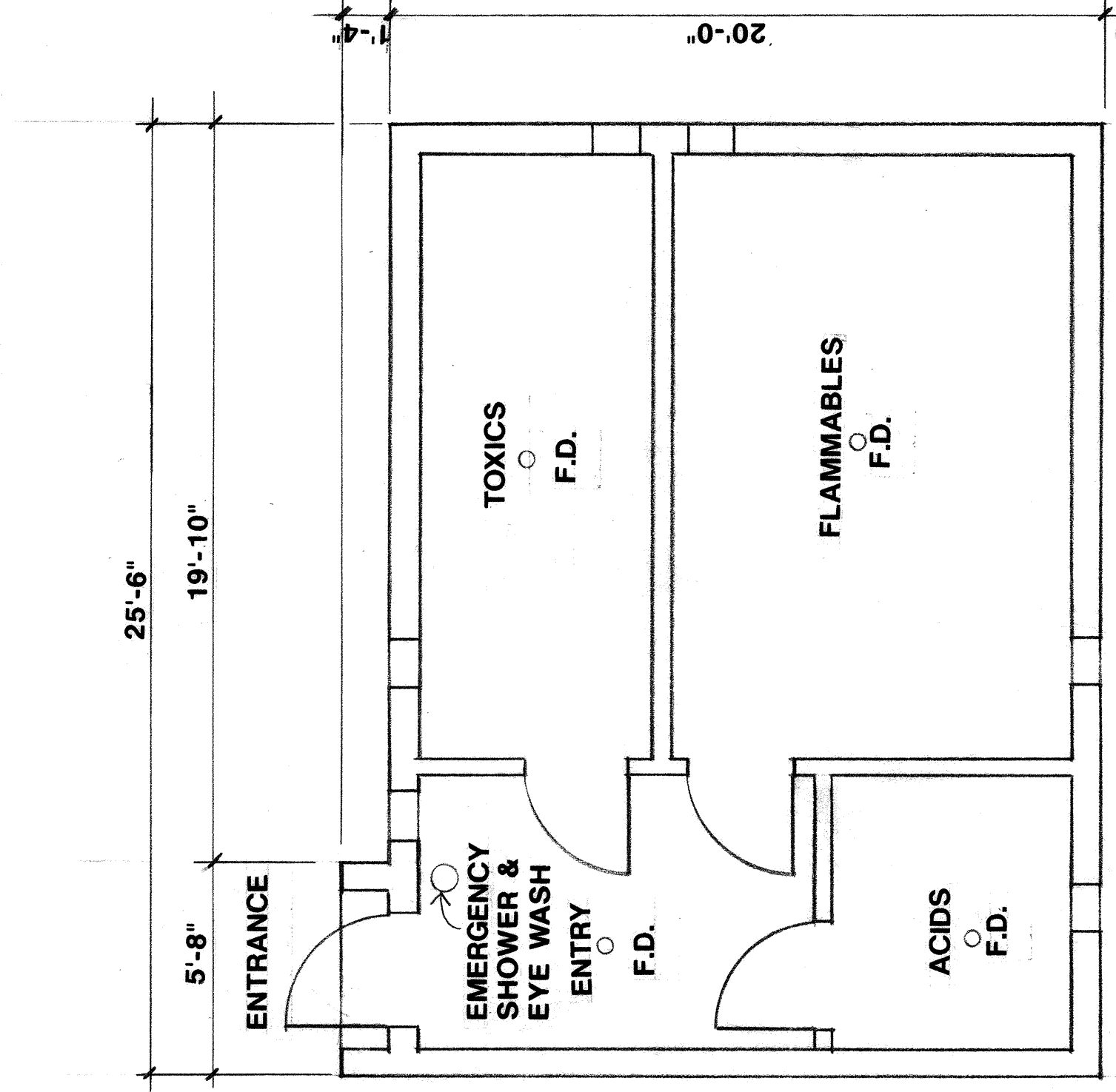
SITE UTILITIES PLAN/
EXIST. COND. SURVEY/
GRADING PLAN / DETAILS

DRAWN BY:	PROJECT NO:
	2666.89

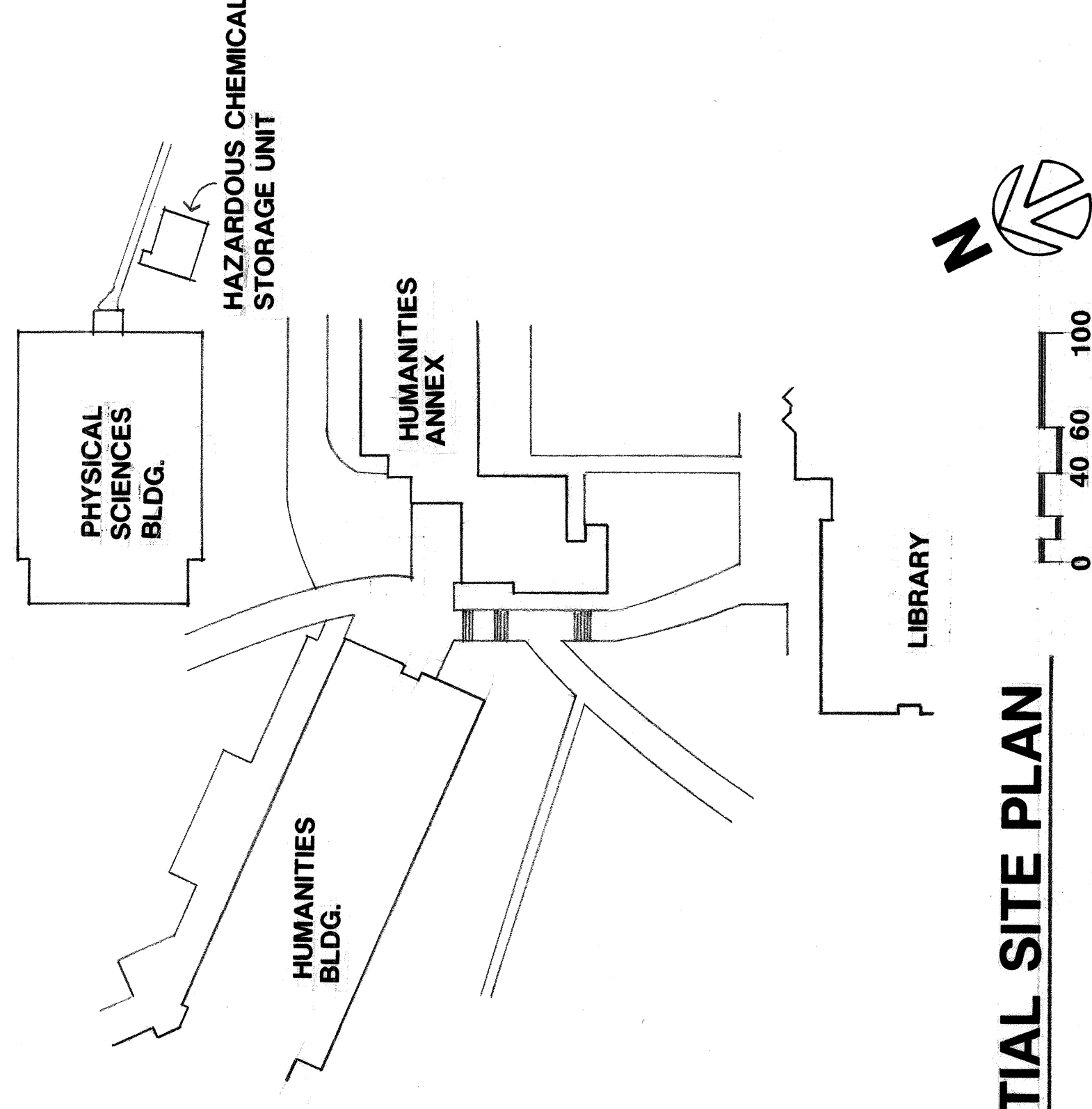
CHECKED BY:	DATE:

APPL. NO:	SHEET:
	A1

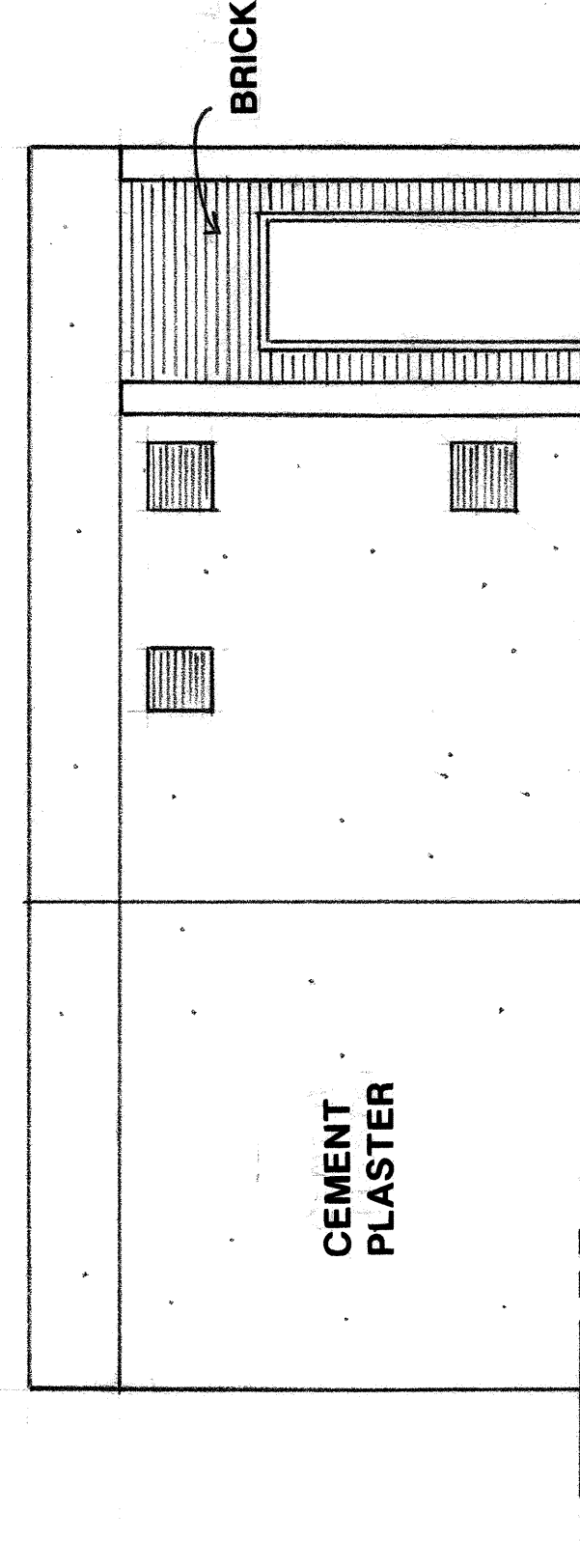
DATA NO:	NO:



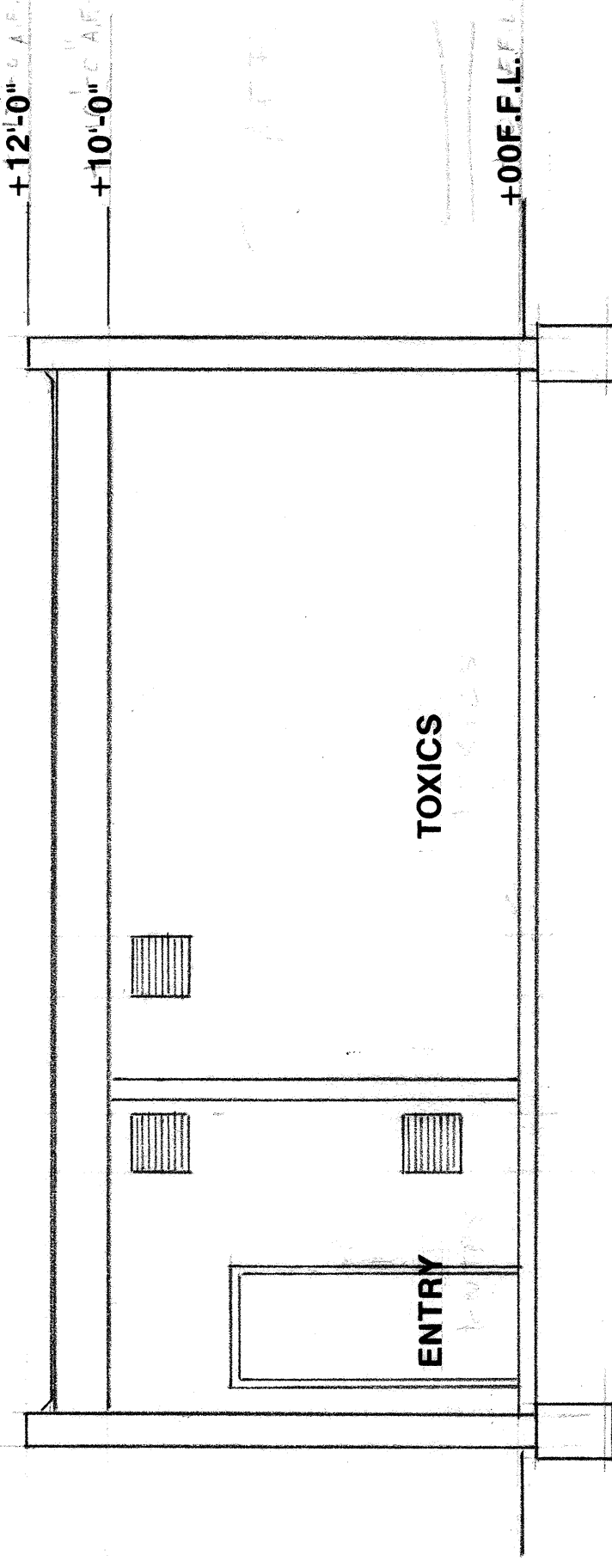
FLOOR PLAN **CONTRA COSTA COLLEGE**
HAZARDOUS CHEMICAL STORAGE UNIT



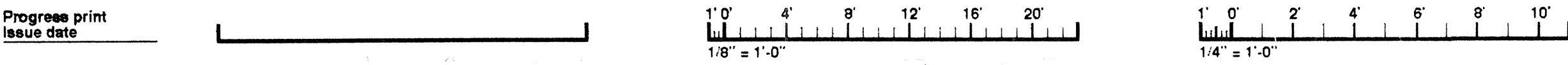
PARTIAL SITE PLAN



NORTH ELEVATION

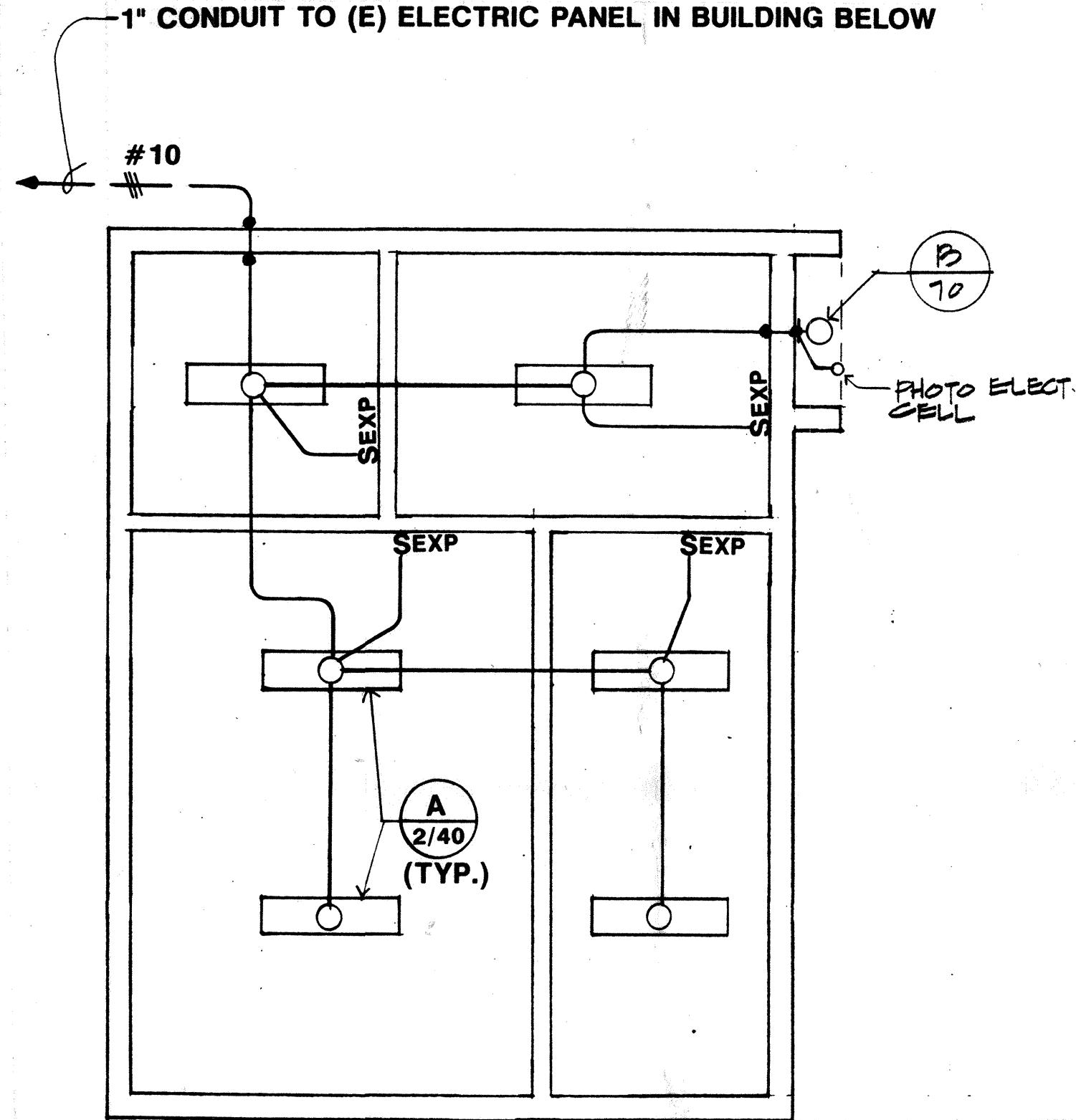


SECTION



ELECTRICAL SPECIFICATIONS

- 16010 **GENERAL REQUIREMENTS**
- A. General Conditions, Supplementary General Conditions, Special Requirements and Division 1A of project specifications apply to this section.
- B. Scope: Provide labor, materials, transportation, equipment, related hand tools, special and occasional services to construct and install the complete electrical system as specified and shown on the plans.
- C. Codes and Standards: Comply with latest published editions of applicable codes and standards whether statutory or not.
- Abbreviations Document
C.E.C. California Electric Code with Adoptions 1991
N.E.C. National Electrical Code
U.L. Underwriters' Laboratories, Inc.
ANSI American National Standards Institute, Inc.
N.E.M.A. National Electrical Manufacturers Assn.
Title 24 State Building Standards, Basic Electrical Regulations
- D. Record Drawings: At completion of work, prepare record drawings on auto positive reproduces made from contract drawings for work under this Division of the Specifications with corrections made showing all changes made during course of work.
- E. Major cutting, patching and painting required by this contract will be performed in a neat and workmanlike manner. All surfaces shall be returned to original condition after installation of equipment.
- F. Visit the project site, take necessary measurements, and verify exact location of buildings, utilities, and other facilities, and obtain such other information as is necessary for an intelligent bid. No allowance will subsequently be made by the Architect or Owner for any error or omission on the part of the bidder in this connection.
- G. Submittals: Within 3 days after the award of the contract, three copies of a complete submittal, consisting of catalog cuts, data and brochures of materials and equipment proposed for use shall be deposited with the Architect for approval. Where materials or equipment are at variance with the plans or specifications, the Contractor shall assume full responsibility for the function and conformity to the space requirements as well as the coordination of all other trades whose work is affected by the change or substitution. The Architects' approval of such material or shop drawings shall not relieve the Contractor from the responsibility for deviations from the drawings or specifications.
- H. Testing: No work shall be enclosed before all required inspections and tests have been performed. Any work prematurely closed shall be reopened for inspection and restoration of all work thereby shall be at the Contractor's expense.
- 16011 **BASIC MATERIALS AND METHODS**
- A. General
1. Use all new material, received in original containers, installed and turned over to the Owner free of defects.
2. Use only one brand, kind or make of each material or equipment item throughout the work. Match existing where possible.
- B. Boxes and Covers: Cast for exterior application, 1-1/2" minimum depth. Form and size best suited to particular location, devices enclosed, fixture supported, number, size, and arrangements of connecting conduits.
- C. Raceway and Fittings
1. Rigid steel conduit with explosion-proof fittings.
- D. Conductors: All conductors insulated copper as manufactured by Okonite, General Electric, Rome Cable Company or approved equal.
1. Power conductors shall be type THWN-THHN.
- E. Connectors, Lugs and Splices
1. Tape, connectors, and lugs shall be rated the same temperature and duty as cable insulation.
2. Scotchlok, one-piece Type R, self-insulated, for No. 10 and smaller wire.
3. T&B, color-keyed, compression connectors, Series 54000 for No. 8 and larger conductors.
- F. Device Plates
1. For interior application, smooth face pattern: Hubbell smooth thermoplastic.
- G. Switches: 20A, 1P explosion proof. Appleton #EFS150-F1 or equal.
- H. Lighting Fixtures and Lamps
1. Fixtures for buildings and specified on Drawings.
2. Furnish and install fixtures complete with fittings, stems, hangers and component parts to make a complete installation including lamps of the type and wattage as scheduled on drawings. Lamps shall be General Electric, Westinghouse, or Sylvania Energy Saver type.
3. Ballasts: Class "P", CBM approved, UL labeled, "A" Sound Rated, high powerfactor type with internal automatic reset thermal protected.
- I. Photo Electric Control: Tork #2104 or equal.
- 16012 **EXECUTION**
- A. General
1. Install all wiring in an accessible conduit system where shown on drawing which is electrically continuous throughout. Conceal all conduit unless exposed work is clearly called for on the drawings.
2. Running threads are prohibited. Where necessary for connecting conduits, use right and left hand couplings or Erickson couplings.
3. Ream conduit ends after cutting; make joints and connections up tight, paint all exposed threads with oxide inhibiting compounds. Do not drill, bore or notch structural members in such a manner that it will impair their structural value. Cutting of holes, if required, shall be done only with approval of the Structural Engineer.
4. Pull no wire into any conduit until all work of any nature that may cause injury is completed. Care shall be taken in pulling wires that no damage occurs to insulation or wires. Blow out and swab conduits before conductors are pulled in.
5. Mark wires at both ends with the correct circuit identification numbers using specified markers.
6. Where more than two conductors run through a single outlet, mark each with the corresponding circuit number at the panelboard.
7. Cut existing gyp-board walls to install new conduit. Patch and paint to match adjacent area.
8. All lighting, conduit and fittings in Hazardous Waste Storage Unit shall be explosion proof to meet current codes.
- END OF SPECIFICATION



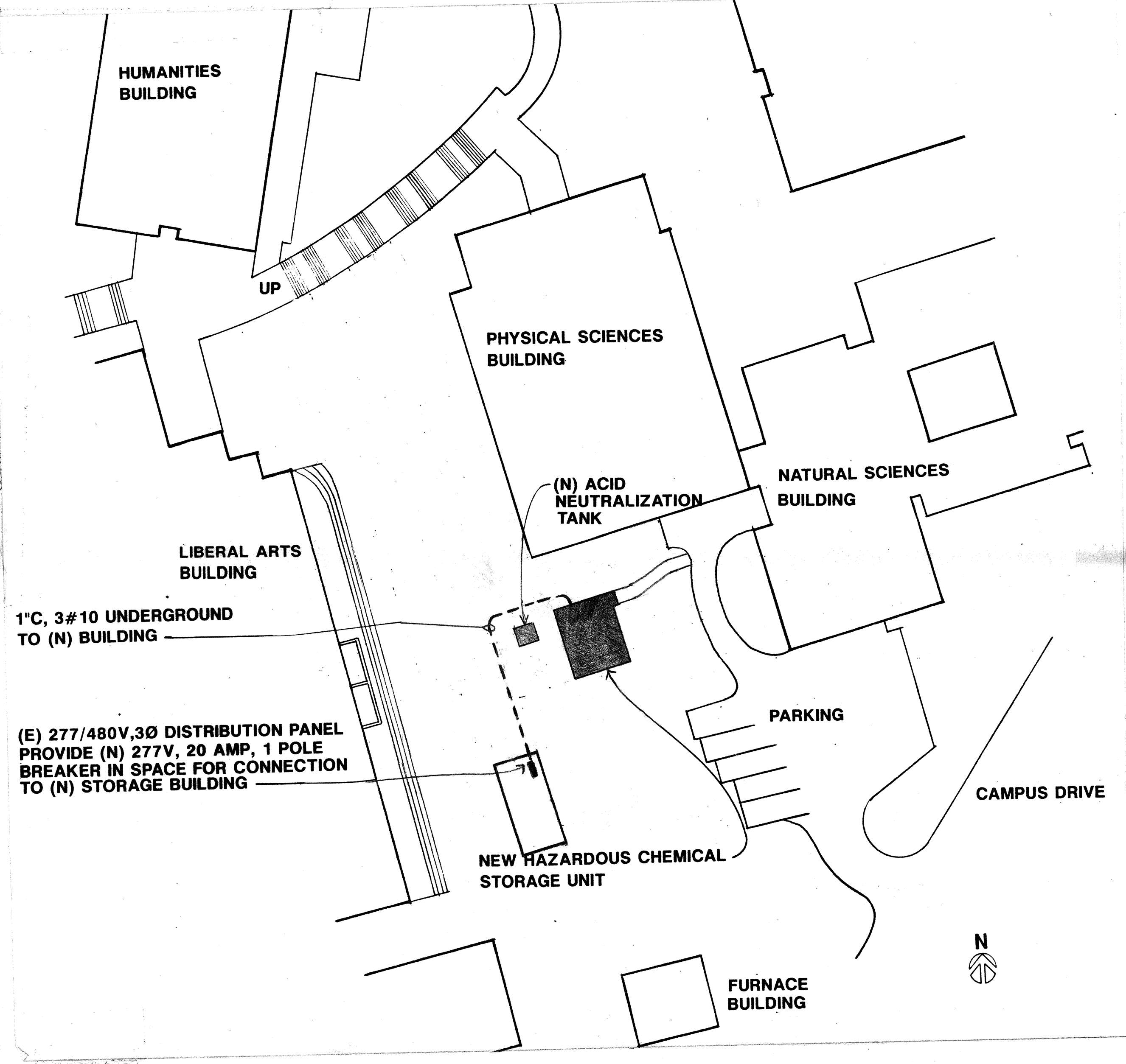
NOTE:

NEW HAZARDOUS CHEMICAL STORAGE UNIT IS CLASSIFIED HAZARDOUS AREA AND REQUIRES EXPLOSION-PROOF FITTINGS, CONDUIT AND SEALING OF PENETRATIONS IN EXTERIOR WALLS.

4F LIGHTING PLAN
1/4" = 1'-0"

FIXTURE SCHEDULE			
TYPE	MANUFACTURER & CATALOG NUMBER	LAMP QUANTITY & TYPE	DESCRIPTION
A	CROUSE-HINDS	2-EVF22088	REFLECTOR & BALLAST FOR 40 WATT, T-12 MEDIUM BI-PIN RAPID START 430MA LAMPS
B	MCPHILBEN #22B3162JB 277V-B	70W E 17 HPS	11" SQUARE HIGH PRESSURE SODIUM WALL PACK WITH PRISMATIC LENS AND BLACK ALUMINUM HOOD

9F ELECTRICAL SITE PLAN
1" = 20'-0"



GENERAL ELECTRICAL NOTES

- 1) ELECTRICAL CONTRACTOR IS TO PROVIDE LABOR, MATERIALS, TRANSPORTATION, EQUIPMENT, RELATED HAND TOOLS, SPECIAL AND OCCASIONAL SERVICES TO CONSTRUCT AND INSTALL THE COMPLETE ELECTRICAL SYSTEM AS SPECIFIED AND SHOWN ON THE PLANS.
- 2) CONTRACTOR TO COORDINATE ALL NEW WORK WITH EXISTING CONDITIONS.

SYMBOL LIST

- SURFACE MOUNTED LIGHT FIXTURE - SEE FIXTURE SCHEDULE
- WALL MOUNTED EXTERIOR LIGHT FIXTURE - SEE FIXTURE SCHEDULE
- SWP LIGHT SWITCH - EXPLOSION-PROOF TYPE MOUNTED AT + 48"
- POINT WHERE EXPLOSION-PROOF SEALANT IS REQUIRED
- (A) LIGHT FIXTURE TAG - LETTER DESIGNATES TYPE, NUMBERS DENOTE NUMBER OF LAMPS AND WATTAGE
- (E) EXISTING
- (N) NEW
- BRANCH CIRCUIT CONDUIT CONCEALED IN CEILING OR WALL
- BRANCH CIRCUIT CONDUIT CONCEALED UNDERGROUND OR UNDER FLOOR
- HOMERUN TO PANELBOARD OR OTHER TERMINATION POINT
- ANY BRANCH CIRCUIT CONDUIT SHALL BE MINIMUM 1/2" C - #12 UNLESS OTHERWISE NOTED OR INDICATED. FOR A GREATER NUMBER OF #12 WIRES: (---) = 1/2" C - #12) ETC. FOR WIRE SIZES OTHER THAN #12: (---) #8 = #38 IN CODE SIZE CONDUIT) ETC.

COMETTA / CIANFICHI

CONSULTANT:

ARCHITECT:

C/C COMETTA / CIANFICHI
ARCHITECTURE • PLANNING

3516 Macdonald Avenue
Richmond, CA 94805-2113
Telephone: (510) 232-2637
Fax Number: (510) 232-7281

PROJECT:

HAZARDOUS CHEMICAL STORAGE UNIT

CONTRA COSTA COLLEGE
2600 MISSION BELL DR.
SAN PABLO, CA. 94806

STATUS:

REVISIONS: (Δ indicates revisions made to this sheet.)

NO. DATE NO. DATE

SHEET TITLE:

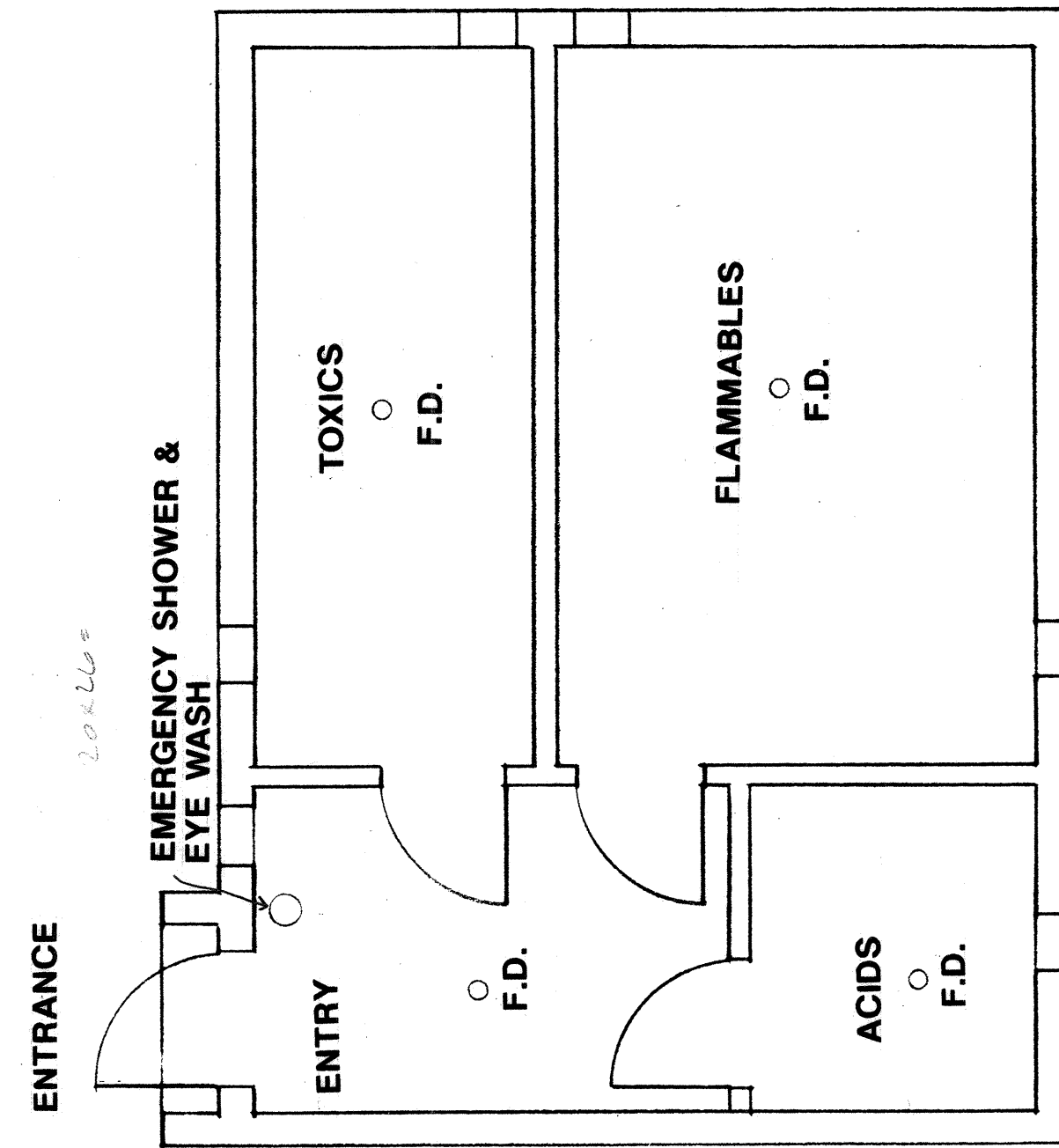
DRAWN BY: PROJECT NO. **2666.89**

CHECKED BY: DATE

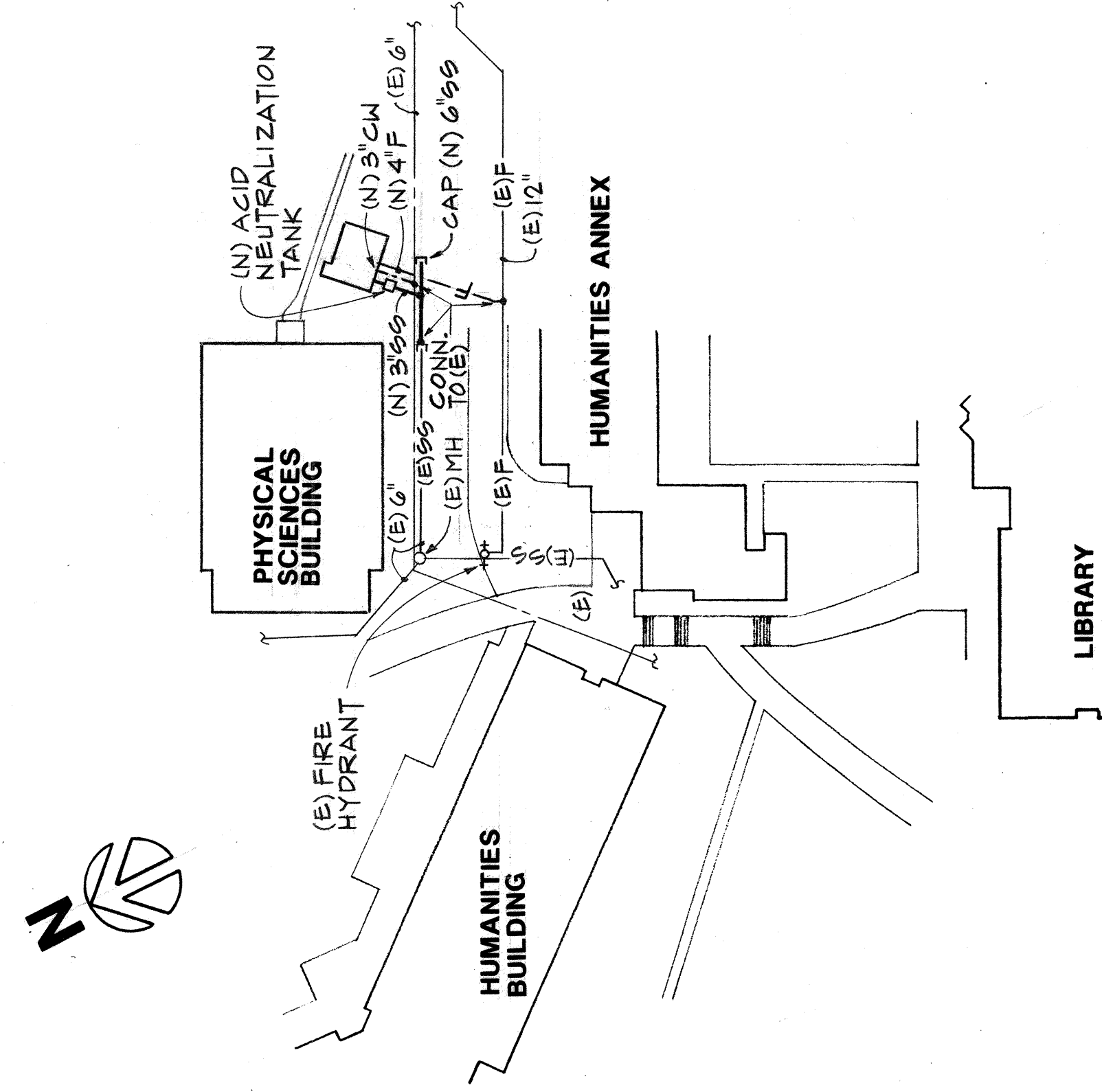
APPL. NO.: SHEET: **E1**

DATA NO.: NO. OF

2-16-95
FORM NO. CIO-101 JANUARY 1992



**FLOOR PLAN CONTRA COSTA COLLEGE
HAZARDOUS CHEMICAL STORAGE UNIT**



PARTIAL SITE PLAN - PLUMBING

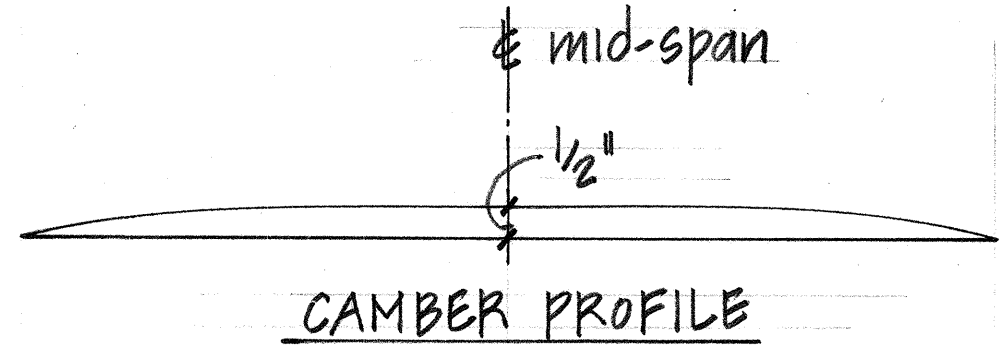
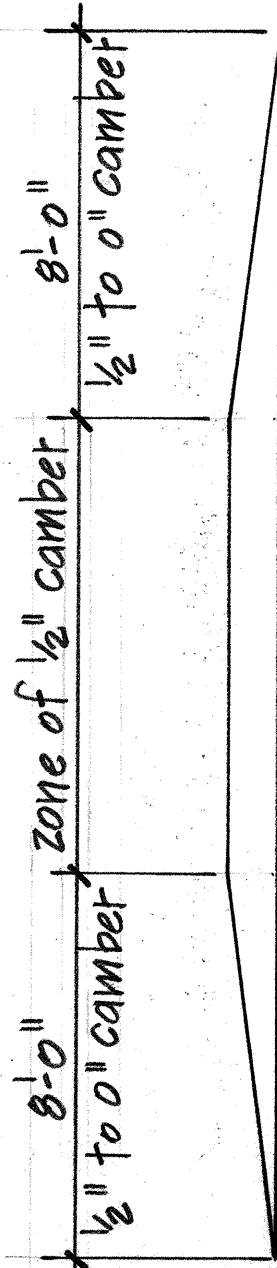
LEGEND	
---	COLD WATER - BELOW GRADE
SS---	SANITARY/SEWER-BELOW GRADE
SD---	STORM DRAIN-BELOW GRADE
F---	FIRE LINE-BELOW GRADE
(E)	EXISTING
(N)	NEW
MH	MANHOLE
G	NATURAL GAS

ROOF FRAMING PLAN NOTES:

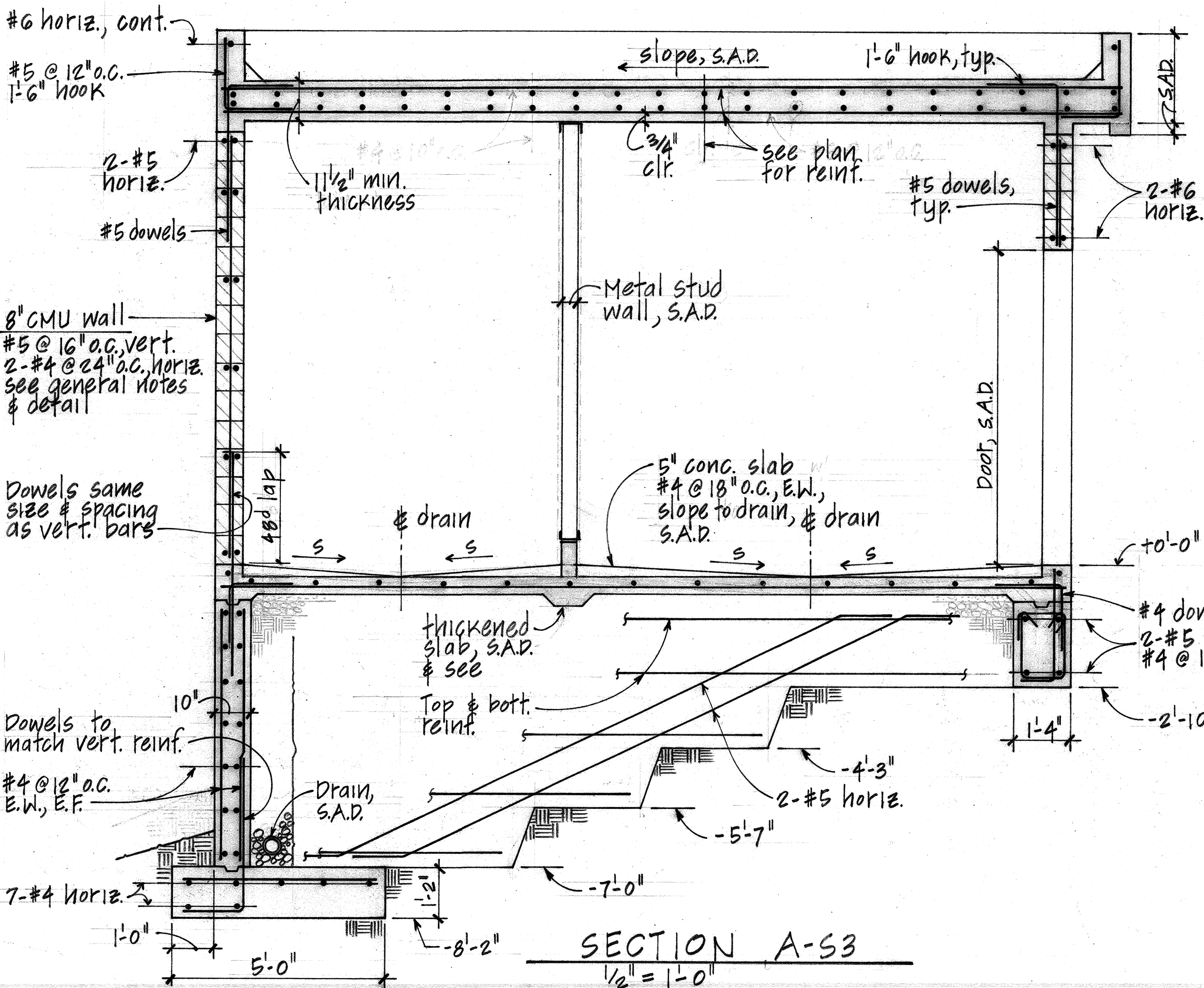
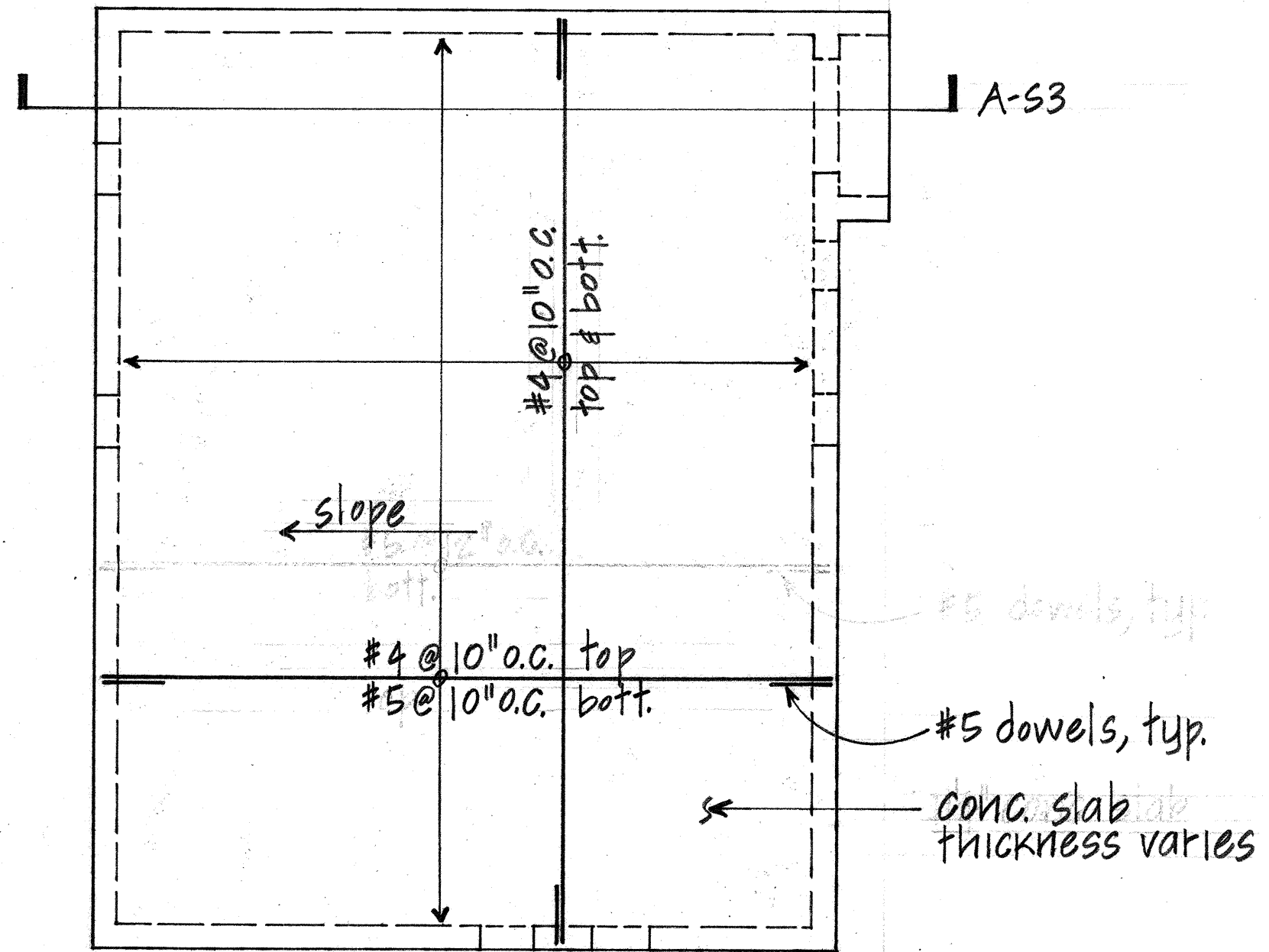
1. see foundation & floor framing plan for grid dimensions & applicable notes.

FOUNDATION PLAN NOTES:

1. For general notes & typical details not shown herein, see sheets S1 & S2.
2. see architectural, mechanical, plumbing, & electrical drawings for pertinent information not shown herein, verify all items with respective trades prior to pouring concrete footings.
3. All dimensions are to face of CMU walls as shown on plan, unless otherwise noted.
4. see architectural, mechanical, & electrical drawings for openings in walls & location of all curbs, slopes & drains.
5. G.J. denotes construction joint. See detail.
6. 0'-0" = datum elevation. S.A.D.
7. Elevation of bottom of footing shall be -2'-10" and shall be at least 1'-6" below adjacent finish grade, unless otherwise noted.
8. Elevation thus: -5'-7" indicates elevation at bottom of each side of stepped footing. see detail.
9. see architectural drawings for depressions and slopes of slab for drainage where occurs.

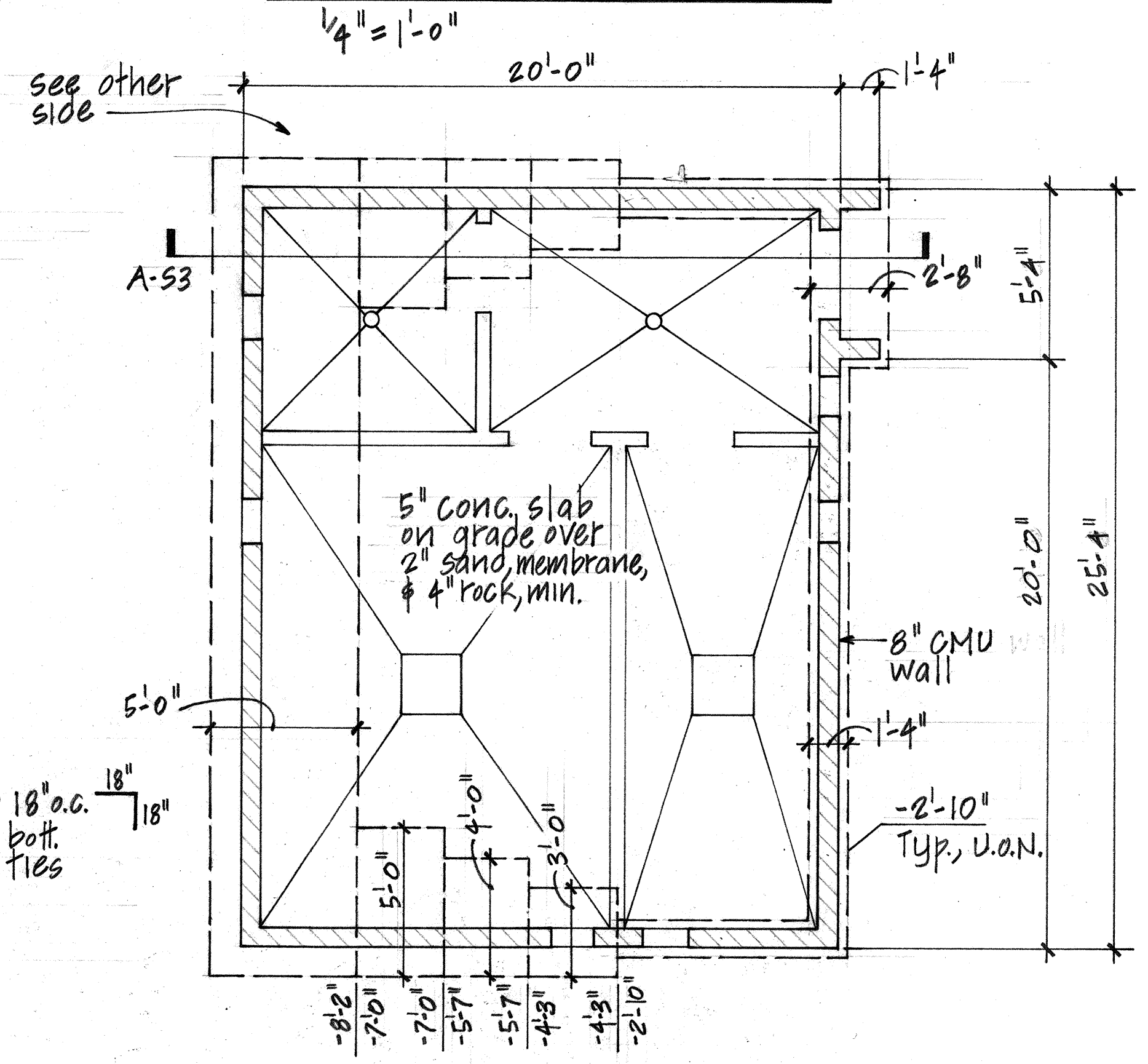


CAMBER PROFILE



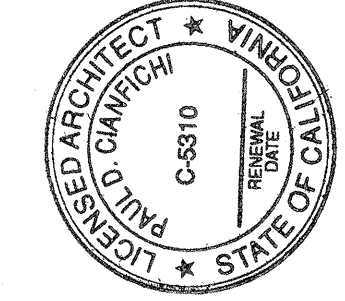
SECTION A-S3

ROOF FRAMING PLAN



FOUNDATION AND FLOOR PLAN

1/4" = 1'-0"



CONSULTANT:

ARCHITECT:
C/C
COMETTA / CIANFICHI
ARCHITECTURE • PLANNING

3516 Macdonald Avenue
Richmond, CA 94805-2113
Telephone: (510) 232-2637
Fax Number: (510) 232-7281

PROJECT:

**HAZARDOUS CHEMICAL
STORAGE UNIT**

CONTRA COSTA COLLEGE
2600 MISSION BELL DR.
SAN PABLO, CA. 94806

STATUS:

REVISIONS: (indicates revisions made to this sheet.)
NO. DATE NO. DATE

SHEET TITLE:

FOUNDATION PLAN, ROOF PLAN,

SECTION, NOTES

DRAWN BY: PROJECT NO: **2666.89**

CHECKED BY: DATE: **2/18/93**

APPL. NO.: SHEET:

DATA NO.: **S3**