

09/24/2018

SURVEYOR'S NOTES:

- This map was prepared using a combination of photogrammetric mapping provided by Tetra Tech Geomatic Technologies in Lafayette, California (date of Photography 1-30-09), supplemental field survey and mapping by LCC, Inc. in Martinez, California, and underground utility locating and mapping by Geotech Utility Locating in El Cerrito, California. As there are ongoing projects within the campus during surveying and mapping, some areas of the campus may differ from conditions shown. In areas of dense vegetation, accuracy of contours may deviate from accepted accuracy standards. Mapping for project C-617 is based on record info only.
- Elevations are based on NAVD 88, per Contra Costa County GPS control monument DE 8480 located in the landscape area on the Western side of Contra Costa College Entrance Circle. The elevation is taken as 52.5 (NAVD 88). Additional local control points established by GPS methods are shown on these base maps.
- Existing utilities shown hereon are based upon a combination of surface observations, the use of electronic locating equipment, and record drawing information. Underground utility lines which are inaccessible through surface structures and/or are nonconductive may vary from the locations shown on this map. The surveyor assumes no responsibility for capacities or functionality of utilities shown. Utilities not shown on campus record maps, and which were inaccessible through normal surface locating methods may not be shown on these maps. No underground locating was performed for projects post 2010.
- Boundary lines are based on record information only. Easements shown are based on the following title reports provided by the District: For APN 414-132-001, 414-132-002, 416-140-033, 416-140-021, North American Title Company order No. 54606-17-15134444-01, dated July 12, 2017.
- Geotechnical information (e.g. fault lines, boring and trench locations, building exclusion and setback zones, etc.) shown on these plans are from the Site Plan, Plate 2, prepared and provided by Kleinfelder as an Amendment to Master Plan Seismic Study, Contra Costa Community College, San Pablo, CA, dated April 2012 (Kleinfelder Proj. No. 124348). The surveyor assumes no responsibility for the locations or accuracy of the geotechnical information shown on these plans or contained in the electronic drawings.

DATE	MARK	REVISION	INIT.

Designed by:
 Drawn by: KPT, CAG, AC, NBC
 Checked by: CMP
 Reviewed by: AEL
 Date (of Survey): 2010-12, 17-18

2	3	4
5	6	7
8	9	10
12	13	14
16	17	18
19	20	21
22	23	24

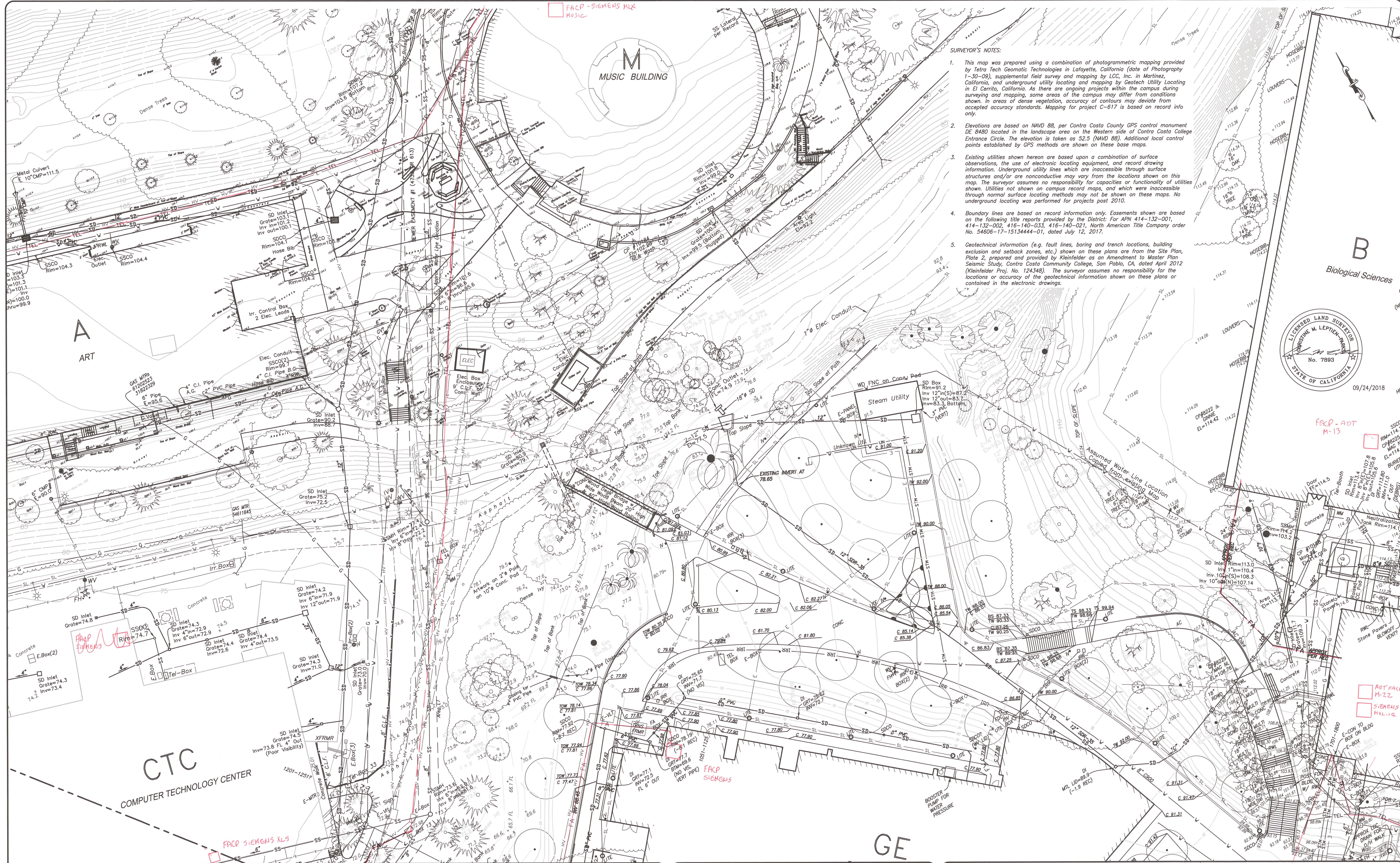
LCC ENGINEERING & SURVEYING, INC.
 930 Estudillo Street
 Martinez, California 94553-1620
 (925) 228-4218 Fax (925) 228-4638
 www.lcc-inc.com
 SCALE: 1"=20'

CCCCC
 Contra Costa Community College District
 500 Court Street
 Martinez, California 94553

ccc **Contra Costa College**
 2600 Mission Bell Drive, San Pablo, CA 94806 (510) 235-7900
 San Pablo, Contra Costa County, California

TOPOGRAPHIC MAP
ISSUE DATE
SEPTEMBER 24, 2018
 File: 2017.036.03 SHEET No. 5 OF 24





- SURVEYOR'S NOTES:**
- This map was prepared using a combination of photogrammetric mapping provided by Tetra Tech Geomatic Technologies in Lafayette, California (date of Photography 1-30-09), supplemental field survey and mapping by LCC, Inc. in Martinez, California, and underground utility locating and mapping by Geotech Utility Locating in El Cerrito, California. As there are ongoing projects within the campus during surveying and mapping, some areas of the campus may differ from conditions shown. In areas of dense vegetation, accuracy of contours may deviate from accepted accuracy standards. Mapping for project C-617 is based on record info only.
 - Elevations are based on NAVD 88, per Contra Costa County GPS control monument DE 8480 located in the landscape area on the Western side of Contra Costa College Entrance Circle. The elevation is taken as 52.5 (NAVD 88). Additional local control points established by GPS methods are shown on these base maps.
 - Existing utilities shown herein are based upon a combination of surface observations, the use of electronic locating equipment, and record drawing information. Underground utility lines which are inaccessible through surface structures and/or are nonconductive may vary from the locations shown on this map. The surveyor assumes no responsibility for capacities or functionality of utilities shown. Utilities not shown on campus record maps, and which were inaccessible through normal surface locating methods may not be shown on these maps. No underground locating was performed for projects post 2010.
 - Boundary lines are based on record information only. Easements shown are based on the following title reports provided by the District: For APN 414-132-001, 414-132-002, 416-140-033, 416-140-021, North American Title Company order No. 54806-17-15134444-01, dated July 12, 2017.
 - Geotechnical information (e.g. fault lines, boring and trench locations, building exclusion and setback zones, etc.) shown on these plans are from the Site Plan, Plate 2, prepared and provided by Kleinfelder as an Amendment to Master Plan Seismic Study, Contra Costa Community College, San Pablo, CA, dated April 2012 (Kleinfelder Proj. No. 124343). The surveyor assumes no responsibility for the locations or accuracy of the geotechnical information shown on these plans or contained in the electronic drawings.



DATE	MARK	REVISION	INIT.

Designed by:
 Drawn by: KPT, CAG, AC, NBC
 Checked by: CMP
 Reviewed by: AEL
 Date (of Survey): 2010-12, 17-18

2	3	4
5	6	7
8	9	10
12	13	14
16	17	18
19	20	21
22	23	24

LCC ENGINEERING & SURVEYING, INC.
 930 Estudillo Street
 Martinez, California 94553-1620
 (925) 228-4218 Fax (925) 228-4638
 www.lcc-inc.com
 SCALE: 1"=20'

CCCCD
 Contra Costa Community College District
 500 Court Street
 Martinez, California 94553

ccc Contra Costa College
 2800 Mission Bell Drive, San Pablo, CA 94806 (510) 235-7800
 San Pablo, Contra Costa County, California

TOPOGRAPHIC MAP
ISSUE DATE
SEPTEMBER 24, 2018
 File: 2017.036.03 SHEET No. 6 OF 24



- SURVEYOR'S NOTES:**
- This map was prepared using a combination of photogrammetric mapping provided by Tetra Tech Geomatic Technologies in Lafayette, California (date of Photography 1-30-09), supplemental field survey and mapping by LCC, Inc. in Martinez, California, and underground utility locating and mapping by Geotech Utility Locating in El Cerrito, California. As there are ongoing projects within the campus during surveying and mapping, some areas of the campus may differ from conditions shown. In areas of dense vegetation, accuracy of contours may deviate from accepted accuracy standards. Mapping for project C-617 is based on record info only.
 - Elevations are based on NAVD 88, per Contra Costa County GPS control monument DE 8480 located in the landscape area on the Western side of Contra Costa College Entrance Circle. The elevation is taken as 52.5 (NAVD 88). Additional local control points established by GPS methods are shown on these base maps.
 - Existing utilities shown hereon are based upon a combination of surface observations, the use of electronic locating equipment, and record drawing information. Underground utility lines which are inaccessible through surface structures and/or are nonconductive may vary from the locations shown on this map. The surveyor assumes no responsibility for capacities or functionality of utilities shown. Utilities not shown on campus record maps, and which were inaccessible through normal surface locating methods may not be shown on these maps. No underground locating was performed for projects post 2010.
 - Boundary lines are based on record information only. Easements shown are based on the following title reports provided by the District: For APN 414-132-001, 414-132-002, 416-140-033, 416-140-021, North American Title Company order No. 54606-17-15134444-01, dated July 12, 2017.
 - Geotechnical information (e.g. fault lines, boring and trench locations, building exclusion and setback zones, etc.) shown on these plans are from the Site Plan, Plate 2, prepared and provided by Kleinfelder as an Amendment to Master Plan Seismic Study, Contra Costa Community College, San Pablo, CA, dated April 2012 (Kleinfelder Proj. No. 124348). The surveyor assumes no responsibility for the locations or accuracy of the geotechnical information shown on these plans or contained in the electronic drawings.



09/24/2018

DATE	MARK	REVISION	INIT.

Designed by:
 Drawn by: KPT, CAG, AC, NBC
 Checked by: CMP
 Reviewed by: AEL
 Date (of Survey): 2010-12, 17-18

2	3	4
5	6	7
8	9	10
12	13	14
16	17	18
19	20	21
22	23	24

LCC ENGINEERING & SURVEYING, INC.
 930 Estudillo Street
 Martinez, California 94553-1620
 (925) 228-4218 Fax (925) 228-4638
 www.lcc-inc.com

SCALE: 1"=20'

CCCD
 Contra Costa Community College District
 500 Court Street
 Martinez, California 94553

Contra Costa College
 2800 Mission Bell Drive, San Pablo, CA 94806 (510) 235-7000

San Pablo, Contra Costa County, California

TOPOGRAPHIC MAP
ISSUE DATE
SEPTEMBER 24, 2018

File: 2017.036.03 SHEET No. 7 OF 24

AT
AUTOMOTIVE TECHNOLOGY

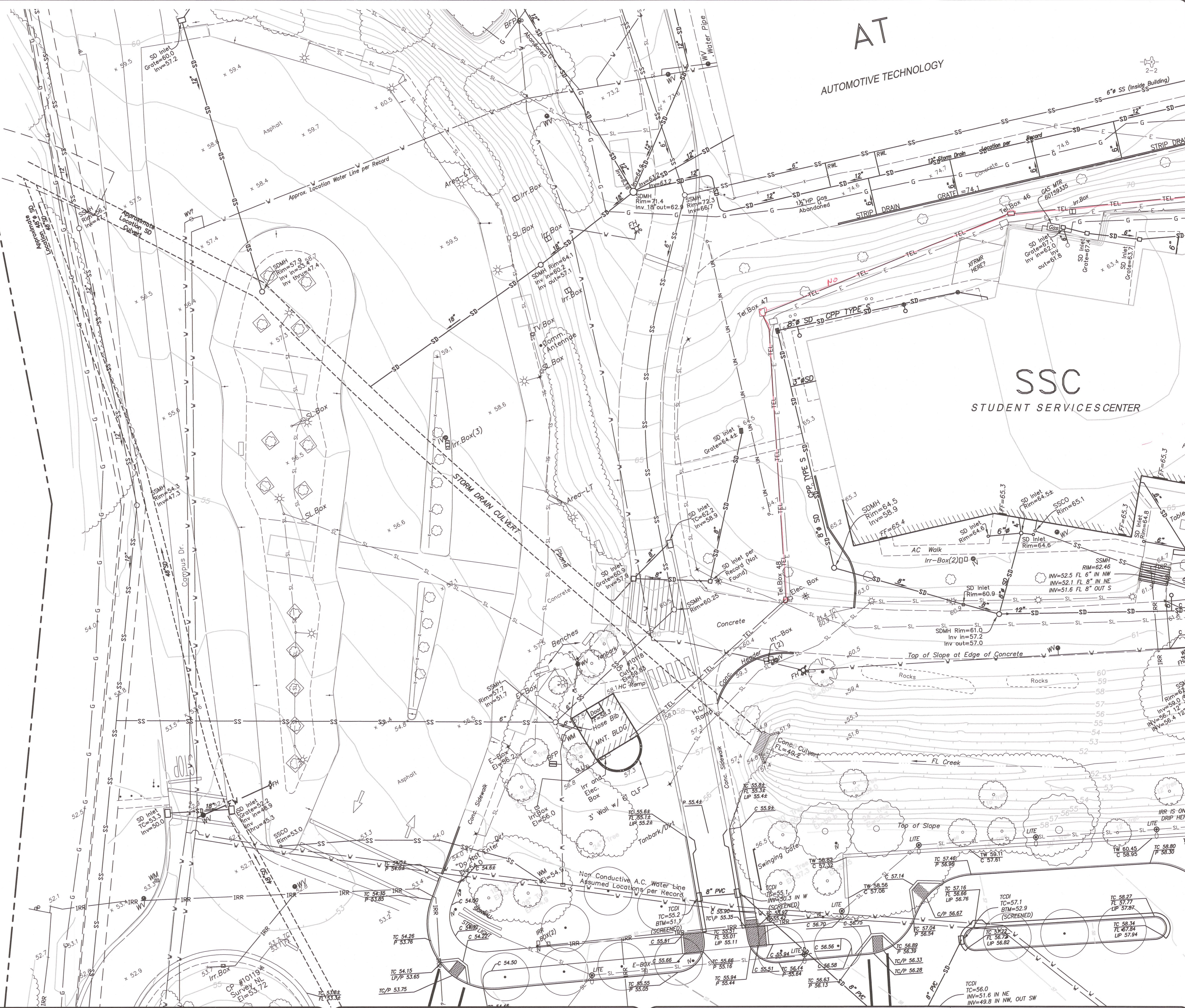
SSC
STUDENT SERVICES CENTER

DRAINAGE EASE TO C.C.C. (4221 OR 623)



SURVEYOR'S NOTES:

- This map was prepared using a combination of photogrammetric mapping provided by Tetra Tech Geomatic Technologies in Lafayette, California (date of Photography 1-30-09), supplemental field survey and mapping by LCC, Inc. in Martinez, California, and underground utility locating and mapping by Geotech Utility Locating in El Cerrito, California. As there are ongoing projects within the campus during surveying and mapping, some areas of the campus may differ from conditions shown. In areas of dense vegetation, accuracy of contours may deviate from accepted accuracy standards. Mapping for project C-617 is based on record info only.
- Elevations are based on NAVD 88, per Contra Costa County GPS control monument DE 8480 located in the landscape area on the Western side of Contra Costa College Entrance Circle. The elevation is taken as 52.5 (NAVD 88). Additional local control points established by GPS methods are shown on these base maps.
- Existing utilities shown hereon are based upon a combination of surface observations, the use of electronic locating equipment, and record drawing information. Underground utility lines which are inaccessible through surface structures and/or are nonconductive may vary from the locations shown on this map. The surveyor assumes no responsibility for capacities or functionality of utilities shown. Utilities not shown on campus record maps, and which were inaccessible through normal surface locating methods may not be shown on these maps. No underground locating was performed for projects post 2010.
- Boundary lines are based on record information only. Easements shown are based on the following title reports provided by the District: For APN 414-132-001, 414-132-002, 416-140-033, 416-140-021, North American Title Company order No. 54606-17-1513444-01, dated July 12, 2017.
- Geotechnical information (e.g. fault lines, boring and trench locations, building exclusion and setback zones, etc.) shown on these plans are from the Site Plan, Plate 2, prepared and provided by Kleinfelder as an Amendment to Master Plan Seismic Study, Contra Costa Community College, San Pablo, CA, dated April 2012 (Kleinfelder Proj. No. 124348). The surveyor assumes no responsibility for the locations or accuracy of the geotechnical information shown on these plans or contained in the electronic drawings.



DATE	MARK	REVISION	INIT.

Designed by:
 Drawn by: KPT, CAG, AC, NBC
 Checked by: CMP
 Reviewed by: AEL
 Date of Survey: 2010-12, 17-18

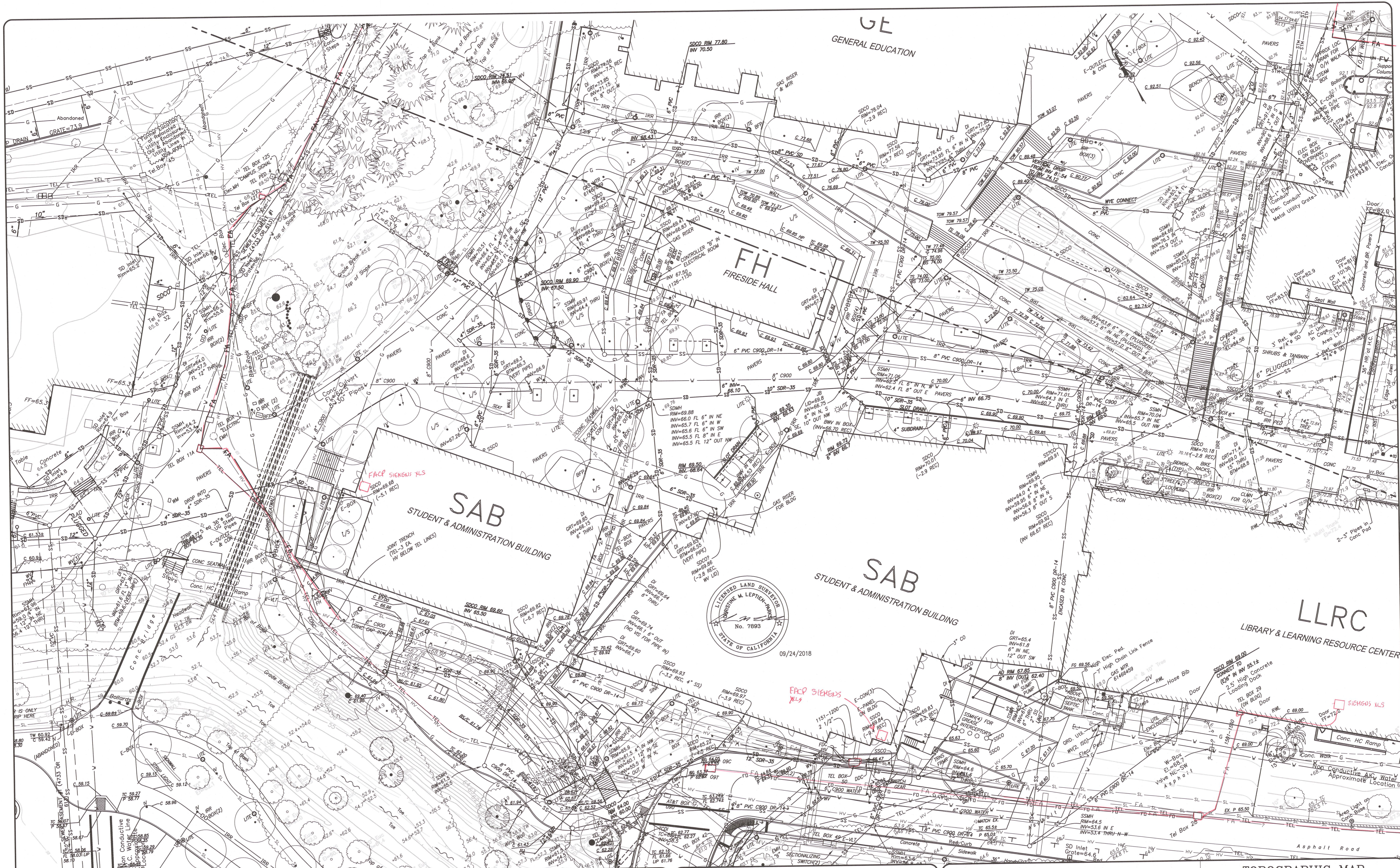
2	3	4
5	6	7
8	9	10
12	13	14
16	17	18
19	20	21
22	23	24

LCC ENGINEERING & SURVEYING, INC.
 930 Estudillo Street
 Martinez, California 94553-1620
 (925) 228-4218 Fax (925) 228-4638
 www.lcc-inc.com
 SCALE: 1"=20'

CCCCD
 Contra Costa Community College District
 500 Court Street
 Martinez, California 94553

Contra Costa College
 2600 Mission Bell Drive, San Pablo, CA 94806 (510) 235-7000
 San Pablo, Contra Costa County, California

TOPOGRAPHIC MAP
ISSUE DATE
SEPTEMBER 24, 2018
 File#: 2017.036.03 SHEET No. 8 OF 24



DATE	MARK	REVISION	INIT.

Designed by:
KPT, CAG, AC, NBC

Checked by:
CMP

Reviewed by:
AEL

Date (of Survey):
2010-12, 17-18

2	3	4
5	6	7
8	9	10
12	13	14
16	17	18
19	20	21
22	23	24

LCC ENGINEERING & SURVEYING, INC.

930 Estudillo Street
Martinez, California 94553-1620
(925) 228-4218 Fax (925) 228-4638
www.lcc-inc.com

SCALE: 1"=20'

CCCDC

Contra Costa Community College District
500 Court Street
Martinez, California 94553

Contra Costa College
2600 Mission Bell Drive, San Pablo, CA 94886 (510) 235-7800

San Pablo, Contra Costa County, California

TOPOGRAPHIC MAP
ISSUE DATE
SEPTEMBER 24, 2018

File: 2017.036.03 SHEET No. 9 OF 24



09/24/2018

SURVEYOR'S NOTES:

1. This map was prepared using a combination of photogrammetric mapping provided by Tetra Tech Geomatic Technologies in Lafayette, California (date of Photography 1-30-09), supplemental field survey and mapping by LCC, Inc. in Martinez, California, and underground utility locating and mapping by Geotech Utility Locating in El Cerrito, California. As there are ongoing projects within the campus during surveying and mapping, some areas of the campus may differ from conditions shown. In areas of dense vegetation, accuracy of contours may deviate from accepted accuracy standards. Mapping for project C-617 is based on record info only.
2. Elevations are based on NAVD 88, per Contra Costa County GPS control monument DE 8480 located in the landscape area on the Western side of Contra Costa College Entrance Circle. The elevation is taken as 52.5 (NAVD 88). Additional local control points established by GPS methods are shown on these base maps.
3. Existing utilities shown hereon are based upon a combination of surface observations, the use of electronic locating equipment, and record drawing information. Underground utility lines which are inaccessible through surface structures and/or are nonconductive may vary from the locations shown on this map. The surveyor assumes no responsibility for capacities or functionality of utilities shown. Utilities not shown on campus record maps, and which were inaccessible through normal surface locating methods may not be shown on these maps. No underground locating was performed for projects post 2010.
4. Boundary lines are based on record information only. Easements shown are based on the following title reports provided by the District: For APN 414-132-001, 414-132-002, 416-140-033, 416-140-021, North American Title Company order No. 54806-17-15134444-01, dated July 12, 2017.
5. Geotechnical information (e.g. fault lines, boring and trench locations, building exclusion and setback zones, etc.) shown on these plans are from the Site Plan, Plate 2, prepared and provided by Kleinfelder as an Amendment to Master Plan Seismic Study, Contra Costa Community College, San Pablo, CA, dated April 2012 (Kleinfelder Proj. No. 124348). The surveyor assumes no responsibility for the locations or accuracy of the geotechnical information shown on these plans or contained in the electronic drawings.

DATE	MARK	REVISION	INIT.

Designed by:
 Drawn by: KPT, CAG, AC, NBC
 Checked by: CMP
 Reviewed by: AEL
 Date (of Survey): 2010-12, 17-18

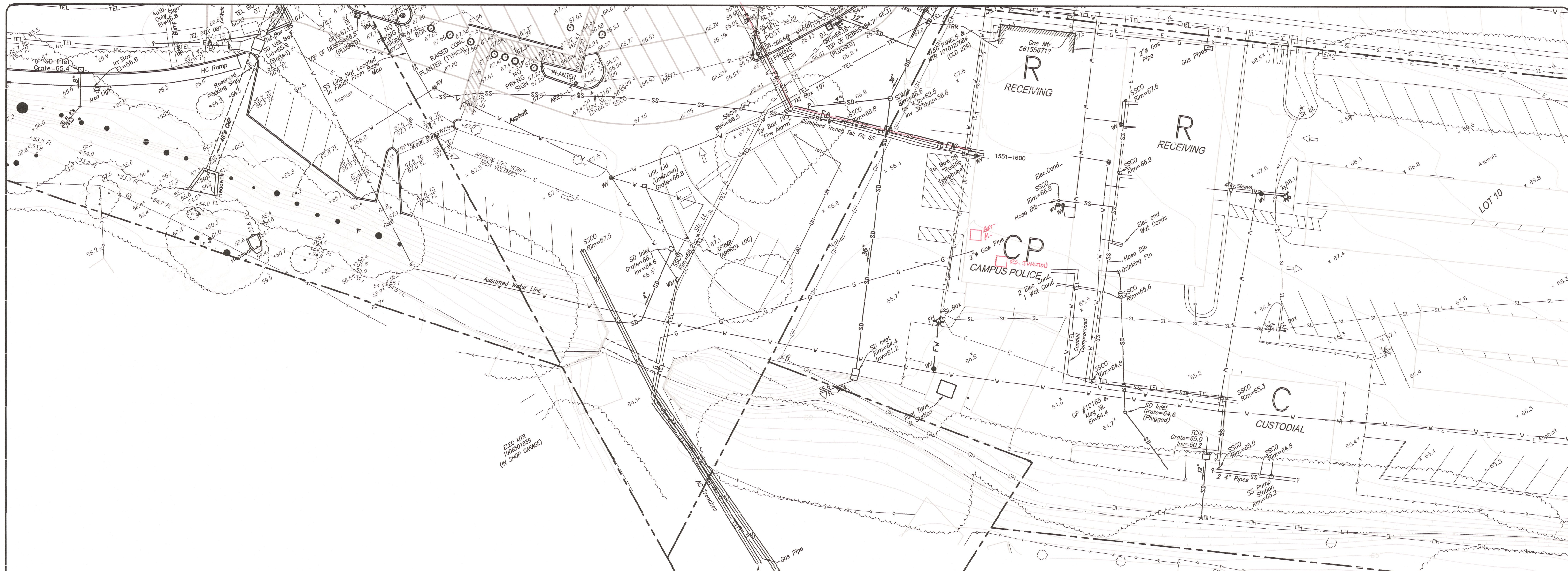
2	3	4
5	6	7
8	9	10
12	13	14
16	17	18
19	20	21
22	23	24

LCC ENGINEERING & SURVEYING, INC.
 930 Estudillo Street
 Martinez, California 94553-1620
 (925) 228-4218 Fax (925) 228-4638
 www.lcc-inc.com

CCCCD
 Contra Costa Community College District
 500 Court Street
 Martinez, California 94553

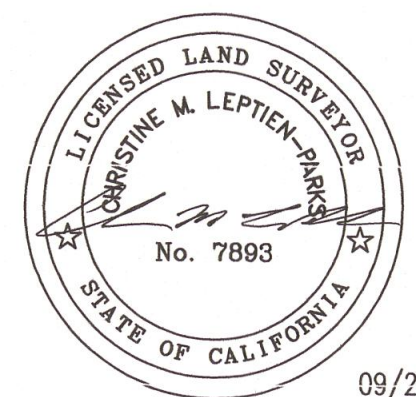
Contra Costa College
 2600 Mission Bell Drive, San Pablo, CA 94806 (510) 235-7800

TOPOGRAPHIC MAP
ISSUE DATE
SEPTEMBER 24, 2018
 File: 2017.036.03 SHEET No. 10 OF 24



SURVEYOR'S NOTES:

1. This map was prepared using a combination of photogrammetric mapping provided by Tetra Tech Geomatic Technologies in Lafayette, California (date of Photography 1-30-09), supplemental field survey and mapping by LCC, Inc. in Martinez, California, and underground utility locating and mapping by Geotech Utility Locating in El Cerrito, California. As there are ongoing projects within the campus during surveying and mapping, some areas of the campus may differ from conditions shown. In areas of dense vegetation, accuracy of contours may deviate from accepted accuracy standards. Mapping for project C-617 is based on record info only.
2. Elevations are based on NAVD 88, per Contra Costa County GPS control monument DE 8490 located in the landscape area on the Western side of Contra Costa College Entrance Circle. The elevation is taken as 52.5 (NAVD 88). Additional local control points established by GPS methods are shown on these base maps.
3. Existing utilities shown hereon are based upon a combination of surface observations, the use of electronic locating equipment, and record drawing information. Underground utility lines which are inaccessible through surface structures and/or are nonconductive may vary from the locations shown on this map. The surveyor assumes no responsibility for capacities or functionality of utilities shown. Utilities not shown on campus record maps, and which were inaccessible through normal surface locating methods may not be shown on these maps. No underground locating was performed for projects post 2010.
4. Boundary lines are based on record information only. Easements shown are based on the following title reports provided by the District: For APN 414-132-001, 414-132-002, 416-140-033, 416-140-021, North American Title Company order No. 54606-17-15134444-01, dated July 12, 2017.
5. Geotechnical information (e.g. fault lines, boring and trench locations, building exclusion and setback zones, etc.) shown on these plans are from the Site Plan, Plate 2, prepared and provided by Kleinfelder as an Amendment to Master Plan Seismic Study, Contra Costa Community College, San Pablo, CA, dated April 2012 (Kleinfelder Proj. No. 124348). The surveyor assumes no responsibility for the locations or accuracy of the geotechnical information shown on these plans or contained in the electronic drawings.



09/24/2018

DATE	MARK	REVISION	INIT.

Designed by:
 Drawn by: KPT, CAG, AC, NBC
 Checked by: CMP
 Reviewed by: AEL
 Date (of Survey): 2010-12, 17-18

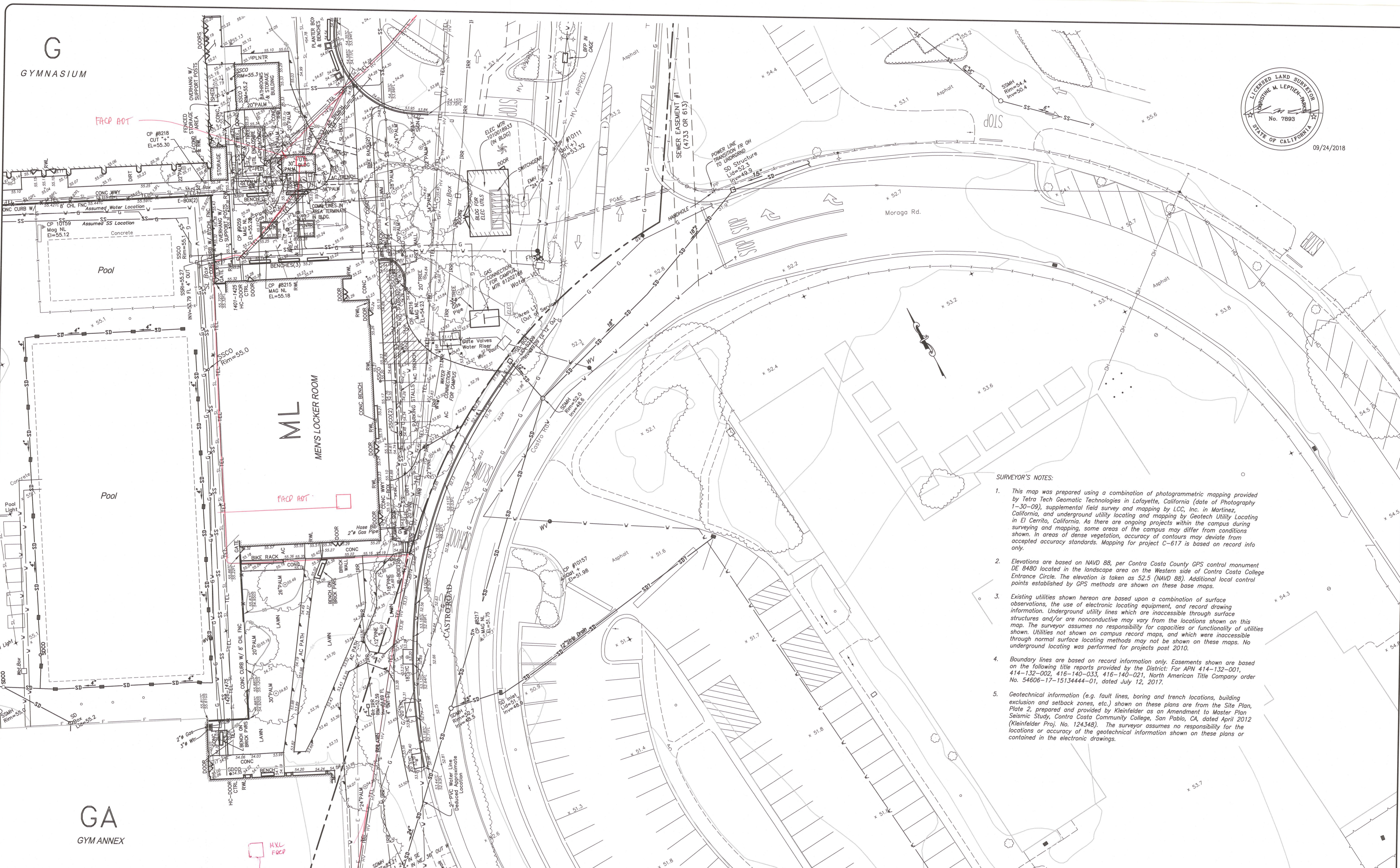
2	3	4
5	6	7
8	9	10
12	13	14
16	17	18
19	20	21
22	23	24

LCC ENGINEERING & SURVEYING, INC.
 930 Estudillo Street
 Martinez, California 94553-1620
 (925) 228-4218 Fax (925) 228-4638
 www.lcc-inc.com
 SCALE: 1"=20'

CCCCD
 Contra Costa Community College District
 500 Court Street
 Martinez, California 94553

ccc Contra Costa College
 2600 Mission Bell Drive, San Pablo, CA 94806 (510) 235-7800
 San Pablo, Contra Costa County, California

TOPOGRAPHIC MAP
ISSUE DATE
SEPTEMBER 24, 2018
 File: 2017.036.03 SHEET No. 14 OF 24



09/24/2018

SURVEYOR'S NOTES:

1. This map was prepared using a combination of photogrammetric mapping provided by Tetra Tech Geomatic Technologies in Lafayette, California (date of Photography 1-30-09), supplemental field survey and mapping by LCC, Inc. in Martinez, California, and underground utility locating and mapping by Geotech Utility Locating in El Cerrito, California. As there are ongoing projects within the campus during surveying and mapping, some areas of the campus may differ from conditions shown. In areas of dense vegetation, accuracy of contours may deviate from accepted accuracy standards. Mapping for project C-617 is based on record info only.
2. Elevations are based on NAVD 88, per Contra Costa County GPS control monument DE 8480 located in the landscape area on the Western side of Contra Costa College Entrance Circle. The elevation is taken as 52.5 (NAVD 88). Additional local control points established by GPS methods are shown on these base maps.
3. Existing utilities shown hereon are based upon a combination of surface observations, the use of electronic locating equipment, and record drawing information. Underground utility lines which are inaccessible through surface structures and/or are nonconductive may vary from the locations shown on this map. The surveyor assumes no responsibility for capacities or functionality of utilities shown. Utilities not shown on campus record maps, and which were inaccessible through normal surface locating methods may not be shown on these maps. No underground locating was performed for projects post 2010.
4. Boundary lines are based on record information only. Easements shown are based on the following title reports provided by the District: For APN 414-132-001, 414-132-002, 416-140-033, 416-140-021, North American Title Company order No. 54606-17-15134444-01, dated July 12, 2017.
5. Geotechnical information (e.g. fault lines, boring and trench locations, building exclusion and setback zones, etc.) shown on these plans are from the Site Plan, Plate 2, prepared and provided by Kleinfelder as an Amendment to Master Plan Seismic Study, Contra Costa Community College, San Pablo, CA, dated April 2012 (Kleinfelder Proj. No. 124348). The surveyor assumes no responsibility for the locations or accuracy of the geotechnical information shown on these plans or contained in the electronic drawings.

DATE	MARK	REVISION	INIT.

Designed by:
KPT, CAG, AC, NBC
Checked by: CMP
Reviewed by: AEL
Date (of Survey):
2010-12, 17-18

2	3	4
5	6	7
8	9	10
12	13	14
16	17	18
19	20	21
22	23	24

LCC ENGINEERING & SURVEYING, INC.
930 Estudillo Street
Martinez, California 94553-1620
(925) 228-4218 Fax (925) 228-4638
www.lcc-inc.com
SCALE: 1"=20'

CCCCC
Contra Costa Community College District
500 Court Street
Martinez, California 94553

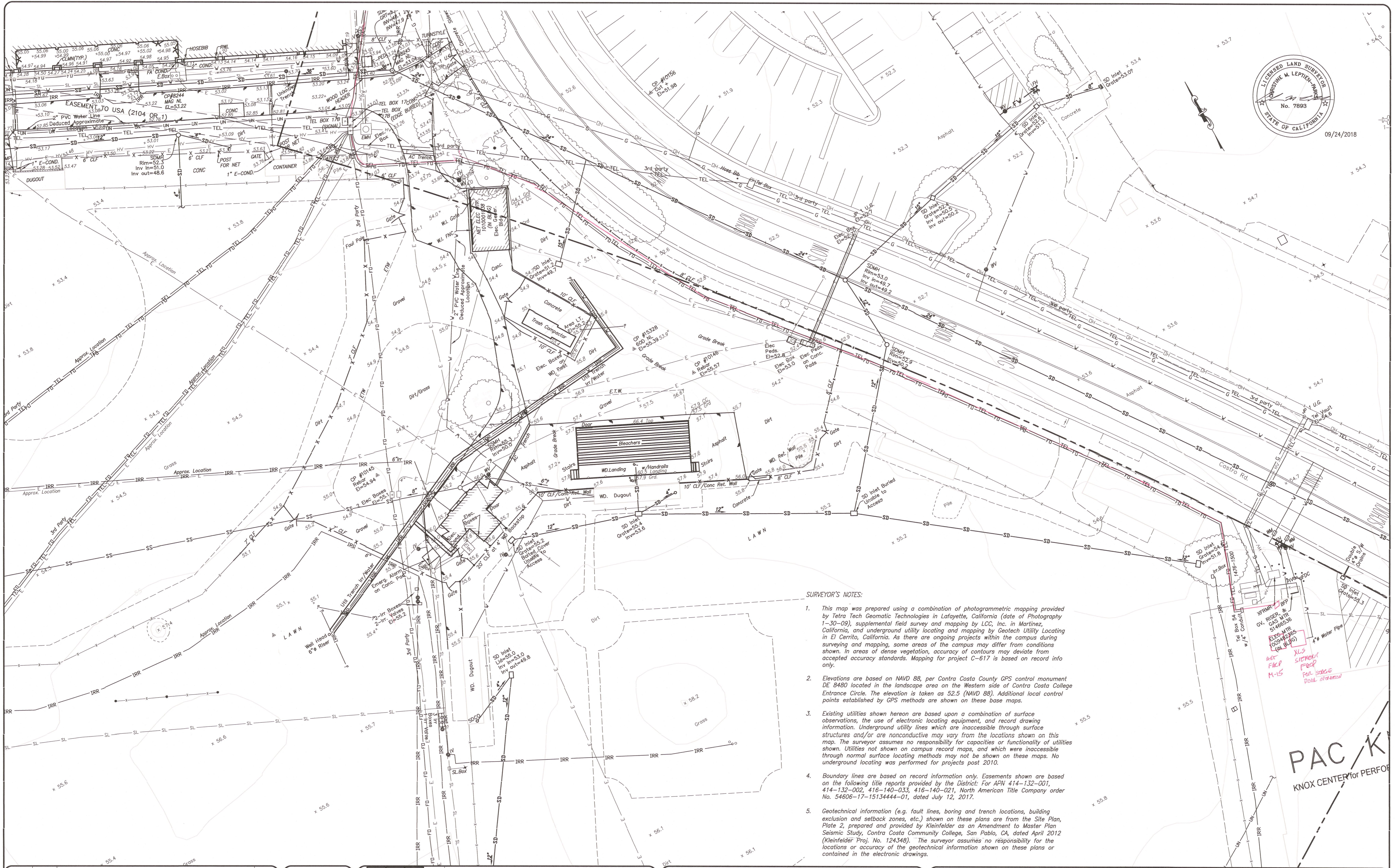
Contra Costa College
2600 Mission Bell Drive, San Pablo, CA 94506 (510) 235-7800

TOPOGRAPHIC MAP
ISSUE DATE
SEPTEMBER 24, 2018
File: 2017.036.03 SHEET No. 17 OF 24

San Pablo, Contra Costa County, California



09/24/2018



SURVEYOR'S NOTES:

1. This map was prepared using a combination of photogrammetric mapping provided by Tetra Tech Geomatic Technologies in Lafayette, California (date of Photography 1-30-09), supplemental field survey and mapping by LCC, Inc. in Martinez, California, and underground utility locating and mapping by Geotech Utility Locating in El Cerrito, California. As there are ongoing projects within the campus during surveying and mapping, some areas of the campus may differ from conditions shown. In areas of dense vegetation, accuracy of contours may deviate from accepted accuracy standards. Mapping for project C-617 is based on record info only.
2. Elevations are based on NAVD 88, per Contra Costa County GPS control monument DE 8480 located in the landscape area on the Western side of Contra Costa College Entrance Circle. The elevation is taken as 52.5 (NAVD 88). Additional local control points established by GPS methods are shown on these base maps.
3. Existing utilities shown hereon are based upon a combination of surface observations, the use of electronic locating equipment, and record drawing information. Underground utility lines which are inaccessible through surface structures and/or are nonconductive may vary from the locations shown on this map. The surveyor assumes no responsibility for capacities or functionality of utilities shown. Utilities not shown on campus record maps, and which were inaccessible through normal surface locating methods may not be shown on these maps. No underground locating was performed for projects post 2010.
4. Boundary lines are based on record information only. Easements shown are based on the following title reports provided by the District: For APN 414-132-001, 414-132-002, 416-140-033, 416-140-021, North American Title Company order No. 54606-17-15134444-01, dated July 12, 2017.
5. Geotechnical information (e.g. fault lines, boring and trench locations, building exclusion and setback zones, etc.) shown on these plans are from the Site Plan, Plate 2, prepared and provided by Kleinfelder as an Amendment to Master Plan Seismic Study, Contra Costa Community College, San Pablo, CA, dated April 2012 (Kleinfelder Proj. No. 124348). The surveyor assumes no responsibility for the locations or accuracy of the geotechnical information shown on these plans or contained in the electronic drawings.

Handwritten notes: YFRM, RISEN & CUS MTR 5/18/2016, FLS-MTR (05/24/2016) (UN-ILUG), AIR, FACP, M-15, XLS SITEPLAN FOR EDGE, DATE: 07/20/18

PAC/K
KNOX CENTER for PERFORM

DATE	MARK	REVISION	INIT.

Designed by:
Drawn by: KPT, CAG, AC, NBC
Checked by: CMP
Reviewed by: AEL
Date (of Survey): 2010-12, 17-18

2	3	4
5	6	7
8	9	10
12	13	14
16	17	18
19	20	21
22	23	24

LCC ENGINEERING & SURVEYING, INC.
930 Estudillo Street
Martinez, California 94553-1620
(925) 228-4218 Fax (925) 228-4638
www.lcc-inc.com
SCALE: 1"=20'

CCC
Contra Costa Community College District
500 Court Street
Martinez, California 94553

ccc Contra Costa College
2600 Mission Bell Drive, San Pablo, CA 94806 (510) 235-7000
San Pablo, Contra Costa County, California

TOPOGRAPHIC MAP
ISSUE DATE
SEPTEMBER 24, 2018
File: 2017.036.03 SHEET No. 20 of 24