

**Exhibit A1 Los Medanos College** Speakers = 85 / Buttons = 82

**NOTE: All buttons to be installed at ADA height  
(between 36 to 48 inches from the floor)**

KEY

- – Both speaker and button in same location (special instructions will be noted below)

S – Speaker

B – Button

X – Location “tentative”

Patch Panel/IDF - marked in **RED**

**PE1000 GYM (No map available)**

Speaker and button on concrete pillar

---

**CAMPUS COMPLEX • LEVEL 1**

**(102/103? CO-102)**

101 – speaker above; button below

102 – speaker above; button below

103 – speaker above; button below

**(122? CC-1-2)**

114 – speaker above; button below

115 – **S** speaker; **B** button

120 – speaker above; button below

121 – **S** speaker; **B** button

---

**CAMPUS COMPLEX • LEVEL 2**

**(252/Restroom? CC-2-3)**

200 – S speaker; B button

212 – S speaker; B button

213 – S speaker; B button

214 – S speaker; B button

**(237/238? CC-2-1)**

220 – speaker above; button below

221 – S speaker; B button

222 – S speaker; B button

223 – S speaker; B button

225 – S speaker; B button

226 – S speaker; B button

228 – S speaker; B button

229 – S speaker; B button

296 – S speaker; B button

---

**COLLEGE COMPLEX LEVEL 3 (CC3)**

**CO 300 – 310 (702A/Restrooms? CC-3-4)**

300 – S speaker; B button

**CC3 300-327 (316? CC-3-3)**

301 – speaker replaces clock; button below

307 – speaker above; button below

309 – speaker above; button below

314 – speaker replaces clock; button below

316 – speaker replaces clock; button between doors

319 – speaker above; button below

322 – speaker replaces clock; button below

327 – speaker replaces clock; button between doors

**CC3 336 – 367 (Unknown)**

336 – speaker above; button below

340 – **S** speaker; **B** button

361 – **S** speaker; **B** button

365 – **S** speaker; **B** button

**CC3 500-524 (501 CC-3-1)**

505 – speaker above; button below

506 – speaker above; button under AP

512– Three locations in one room:

- ① – speaker above; button below
- ② – speaker ONLY replaces clock
- ③ – speaker on green beam; button below

517 – speaker replaces clock; button below

---

**MU3 700 – 775 (724 New TR)**

702 – speaker above existing speaker on wooden panel; button below

710 – **S** speaker; **B** button to left of door

720 vestibule area – speaker above; button below

730 – speaker high on the wall next to the fire strobe light; button down

740 – speaker next to AP; button next to phone

750 – speaker replaces clock; button below

---

**STUDENT SERVICES Level 4 SS4 (Unknown)**

412 – speaker above; button below

---

**PS BUILDING FLOOR 1 (Unknown)**

14 – speaker above; button below

16 – **S** speaker; **B** button

---

**MATH BUILDING FLOOR 1 (Unknown)**

MA 102 – speaker; button below Wi-Fi

MA 106 – speaker replaces clock; button below

MA 107 – speaker replaces clock; button below

**MATH BUILDING FLOOR 2 (Unknown)**

MA 202 – speaker; button

MA 203 –speaker; button

MA 204 – speaker; button

MA 205 – speaker; button

MA 206 – speaker; button

MA 207 – speaker; button

MA 208 – speaker; button

---

**SCIENCE BUILDING • FLOOR 1 (109 SC-1-1)**

SC 102 – speaker above; button below

SC 103 – Two locations:

① – speaker above sink ; button below

② – speaker above; button below

SC 126 – **S** speaker; **B** button

SC 127 – **S** speaker; **B** button under gas shut-off

SC 129 – speaker above; button below

SC 130 – **S** speaker; **B** button

SC 131 – speaker above; button below

SC 132 – **S** speaker; **B** button

SC 133 – **S** speaker; **B** button

SC 136 – speaker above; button below

---

**SCIENCE BUILDING • FLOOR 2 (207 SC-2-1)**

SC 202 – speaker replaces clock; button next to thermostat

SC 206 – speaker replaces clock; button to right of board

SC 208 – speaker replaces clock; button to right of board

SC 225 – speaker; button below

SC 226 – speaker above; button below

SC 227 – speaker above; button below

SC 229 – speaker above; button below

SC 230 – speaker above; button below

SC 234 – speaker replaces clock; button below

SC 235 – speaker; button left of screen

---

**LIBRARY BUILDING • FLOOR 1 (120 L-1-1)**

Main library floor:

① - speaker ONLY replaces clock; NO button

② - speaker ONLY near the access point; NO button

L 105 – speaker above; button below

L 106 – speaker above; button below

L 109 – speaker above; button below

# Campus Overview

**LOS MEDANOS COLLEGE**

2700 East Leland Road  
 Pittsburg, CA 94565  
 (925) 439 - 2181  
[www.losmedanos.edu](http://www.losmedanos.edu)

### Building Legend

<b>CC</b> College Complex	<b>CO</b> CORE Center for Academic Support Advancement/LMC Foundation	<b>CS</b> Child Study Center	<b>EL</b> ETEC Lab	<b>F</b> Bookstore Cafeteria	<b>GA</b> Student Life	<b>H</b> Honors Center	<b>L</b> Library	<b>MA</b> Math	<b>MU</b> Music	<b>CL</b> Classrooms	<b>SC</b> Science	<b>SS</b> Student Services Admissions/Cashier Counseling Center DSPS/EOPS Financial Aid/Scholarships Office of Instruction President's Office Welcome Center
---------------------------	---	------------------------------	--------------------	------------------------------	------------------------	------------------------	------------------	----------------	-----------------	----------------------	-------------------	---

Restrooms

Handicap Parking

Handicap Entrance

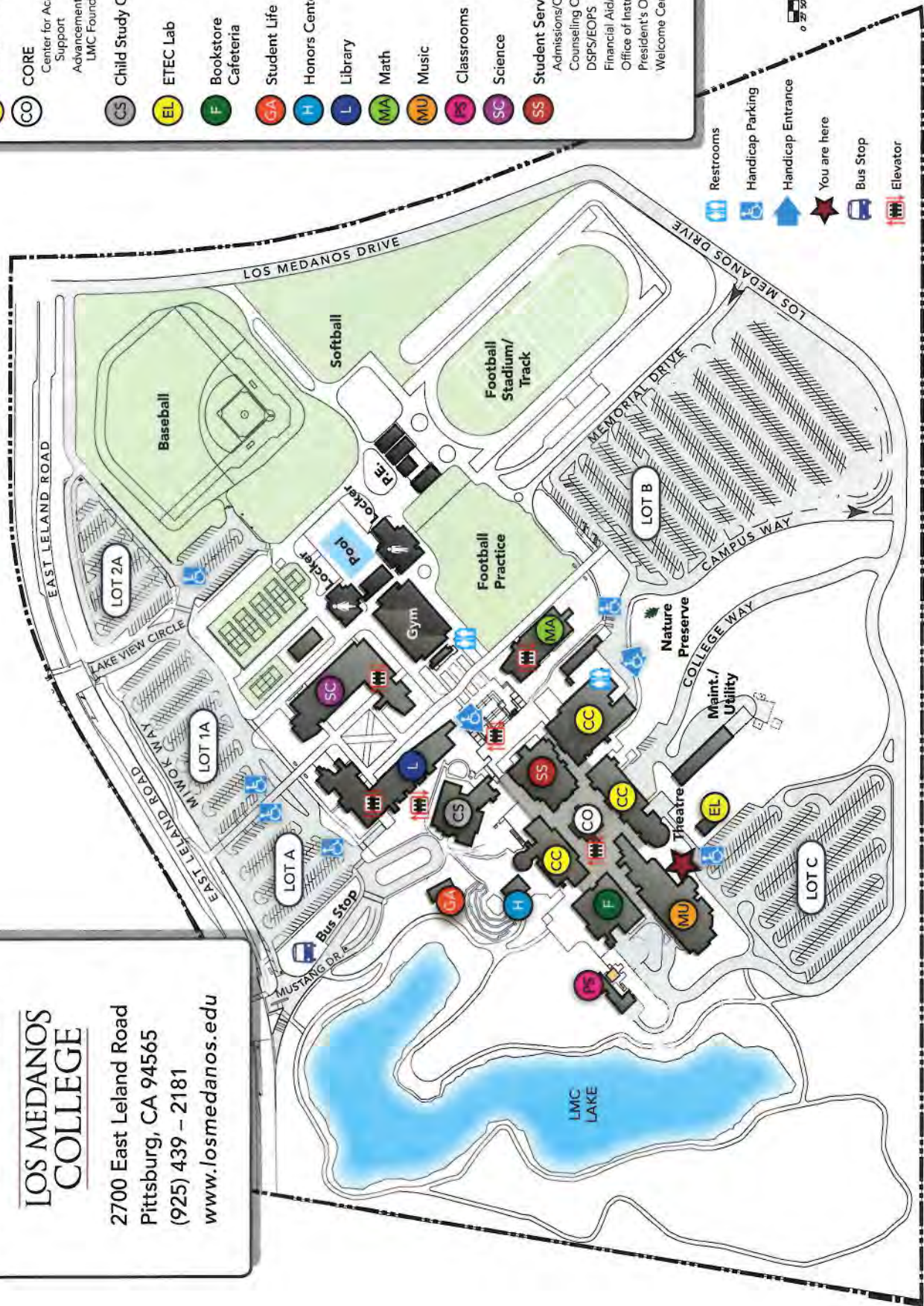
You are here

Bus Stop

Elevator

north

0 50 100 300



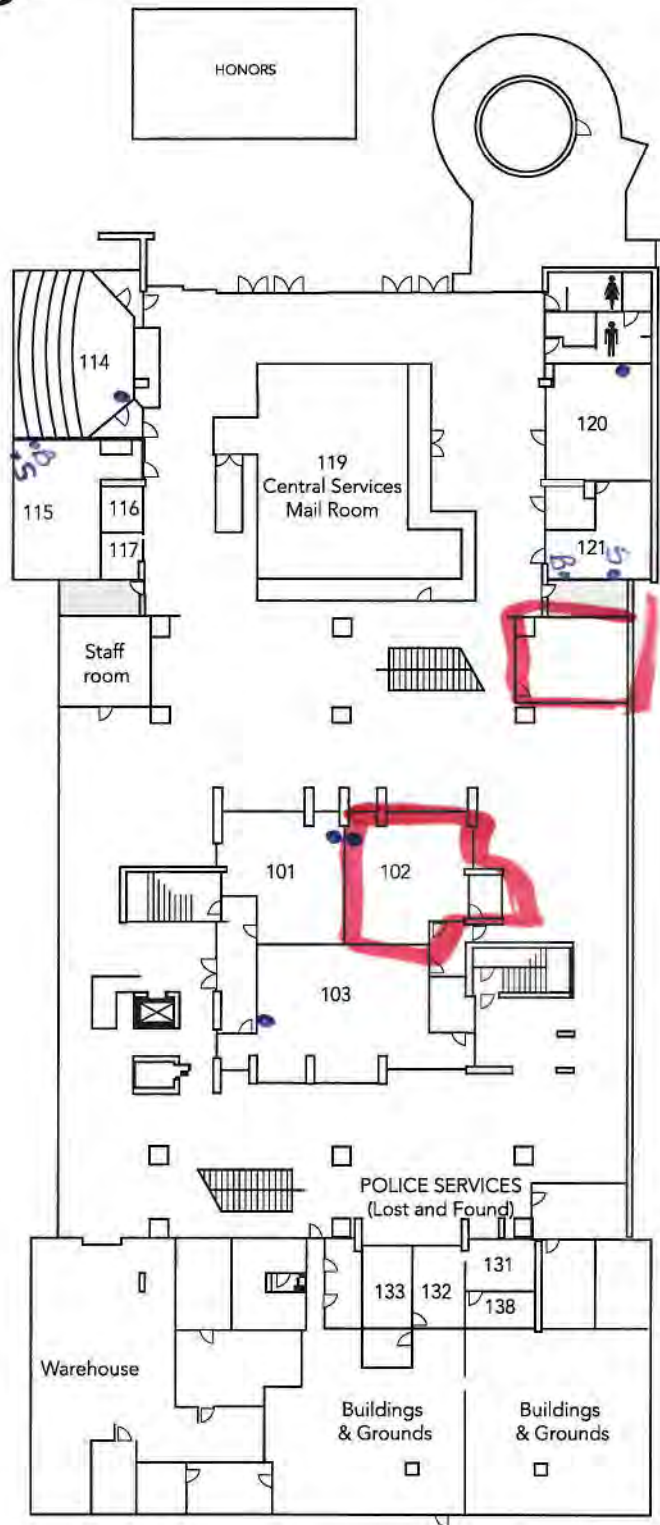
Smoking restricted to parking lot areas.

# Los Medanos College

## CAMPUS COMPLEX • Level 1

2700 E. Leland Road Pittsburg, CA 94565

www.losmedanos.edu | 925-439-2181



CC & CO • FLOOR 1



**KEY**

- = Maintenance Closet
- = Elevator
- = Restroom

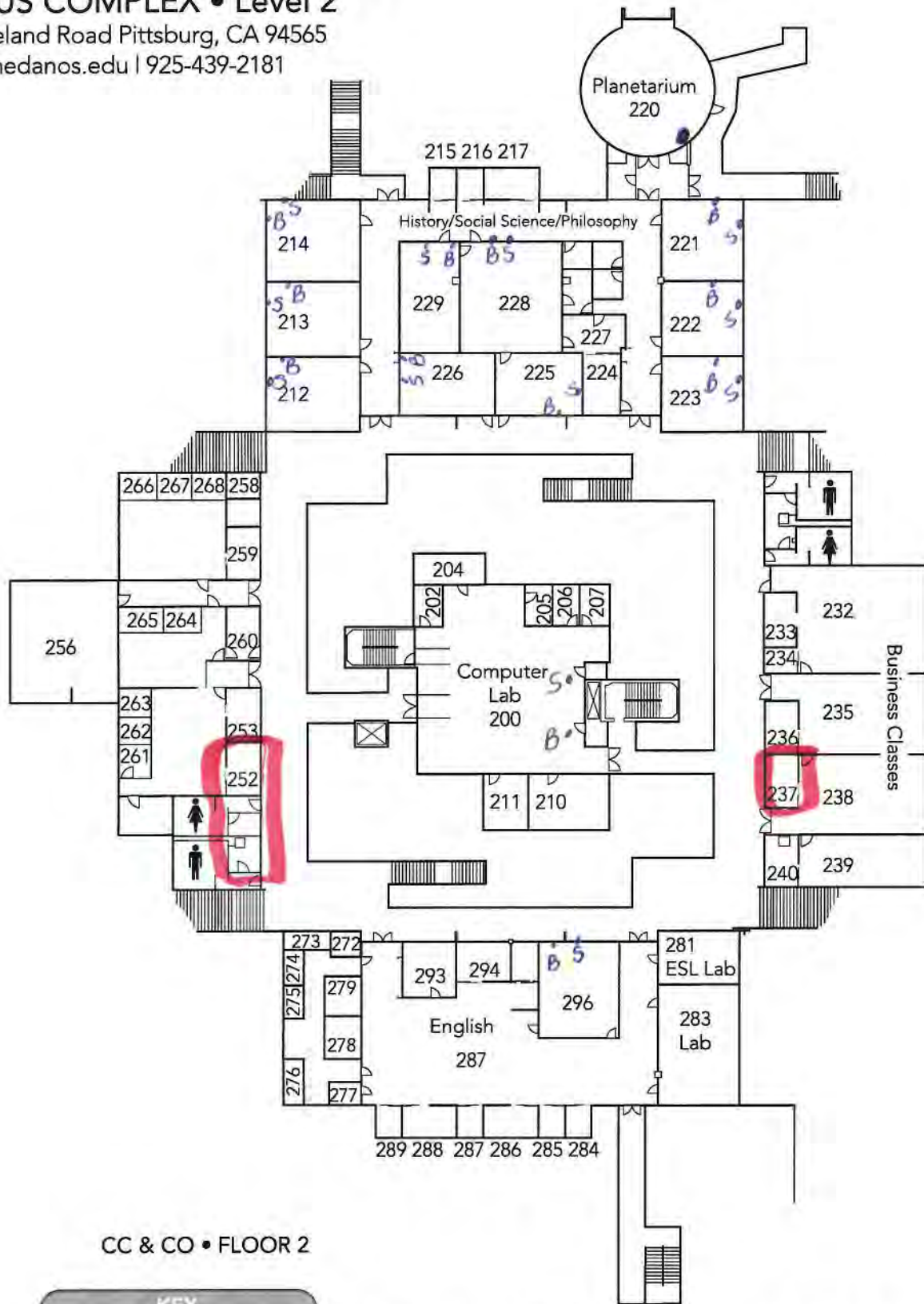
Note: The center of the complex room numbers begin with CO. The outer area of the complex begins with CC.

# Los Medanos College

## CAMPUS COMPLEX • Level 2

2700 E. Leland Road Pittsburg, CA 94565




www.losmedanos.edu | 925-439-2181



### CC & CO • FLOOR 2



**KEY**

-  = Maintenance Closet
-  = Elevator
-  = Restroom

Note: The center of the complex room numbers begin with CO.  
The outer area of the complex begins with CC.

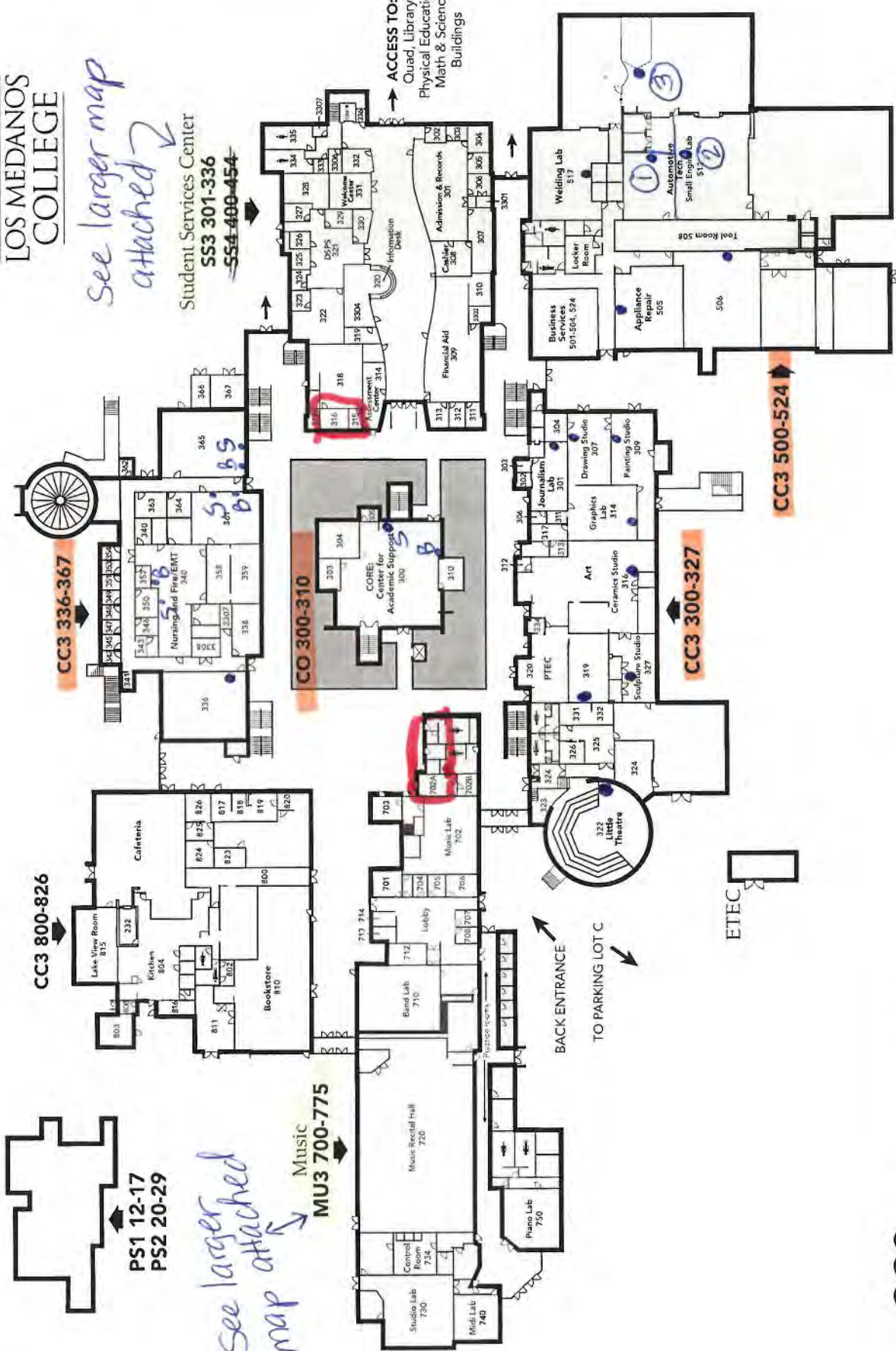


**LOS MEDANOS  
COLLEGE**

*see larger map  
attached*

**Student Services Center  
SS3 301-336  
554-400-454**

**ACCESS TO:  
Quad, Library,  
Physical Education,  
Math & Science  
Buildings**



**CC3 336-367**

**CO 300-310**

**CC3 300-327**

**CC3 500-524**

**CC3 800-826**

**Music  
MU3 700-775**

**PS1 12-17  
PS2 20-29**

*see larger  
map attached*

**BACK ENTRANCE  
TO PARKING LOT C**

**ETEC**



**CC3**  
College Complex Level 3

**Evacu**

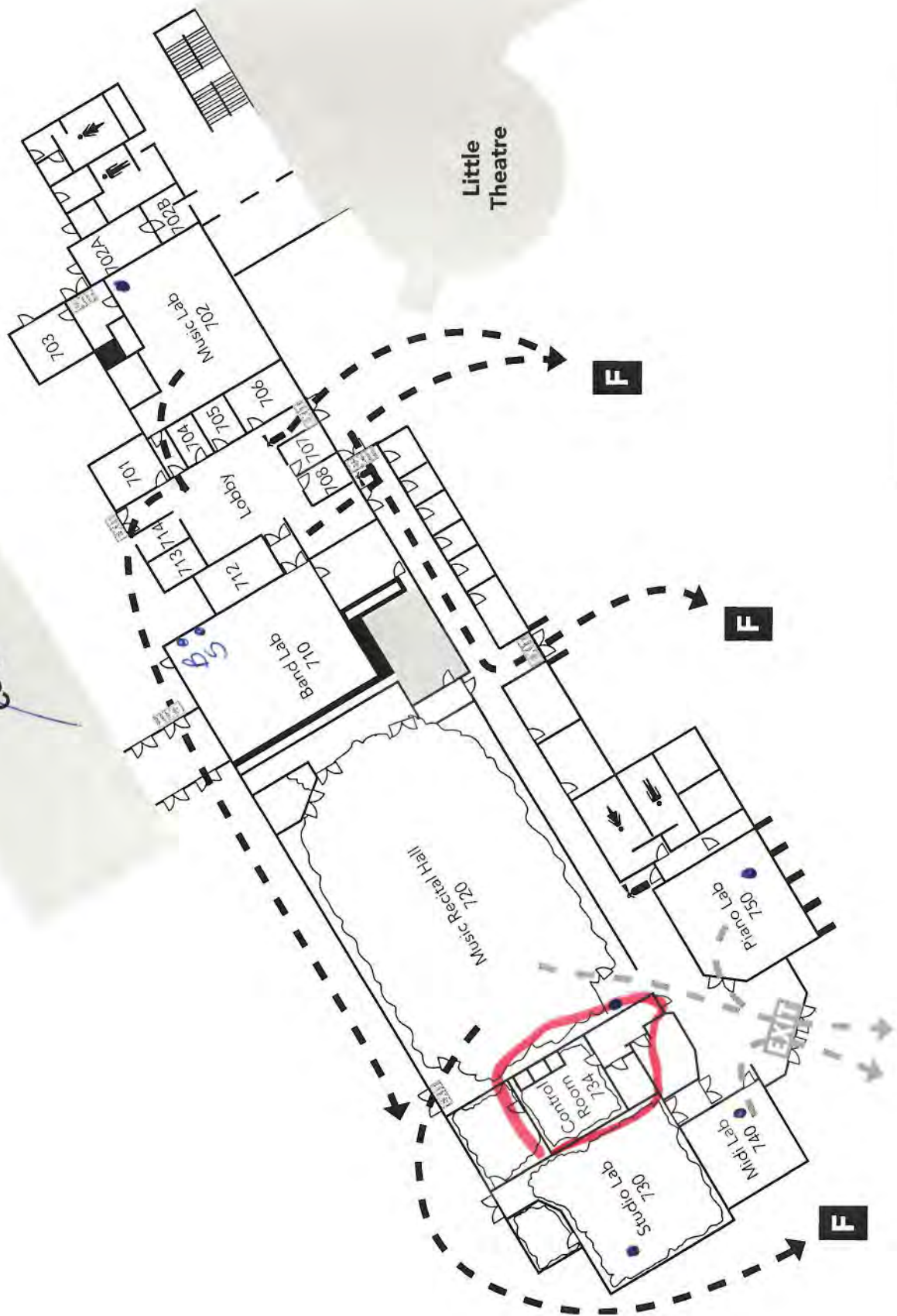
- Mai
- Wal
- Wal
- Sloj
- **Ar**
- Nor
- Lov

A B C D **E** G H



MUSIC  
MU3 700-775

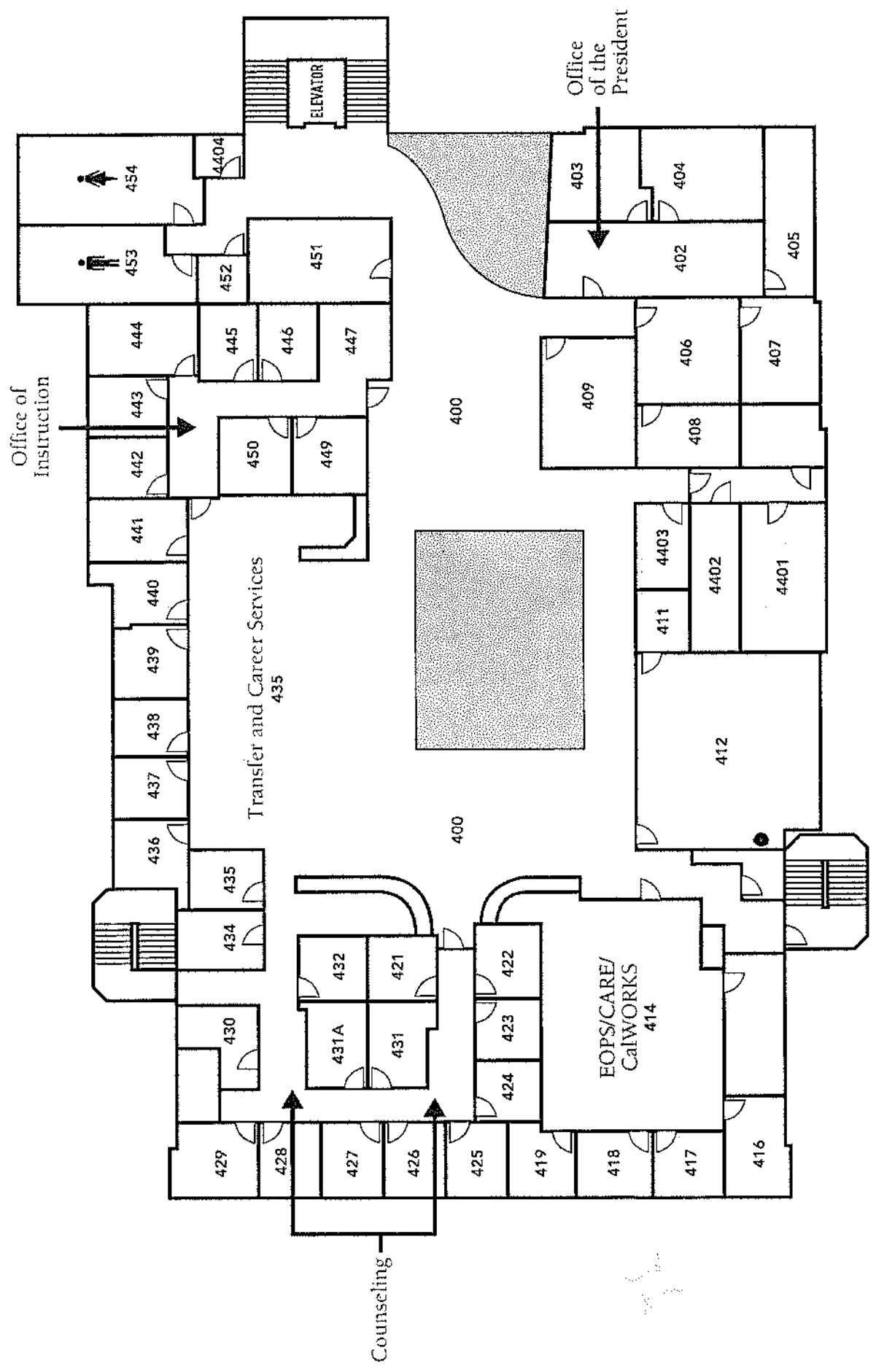
CC3 800816



# LOS MEDANOS COLLEGE

## Student Services Level 4 SS4

Counseling, EOPS, Transfer and Career Services

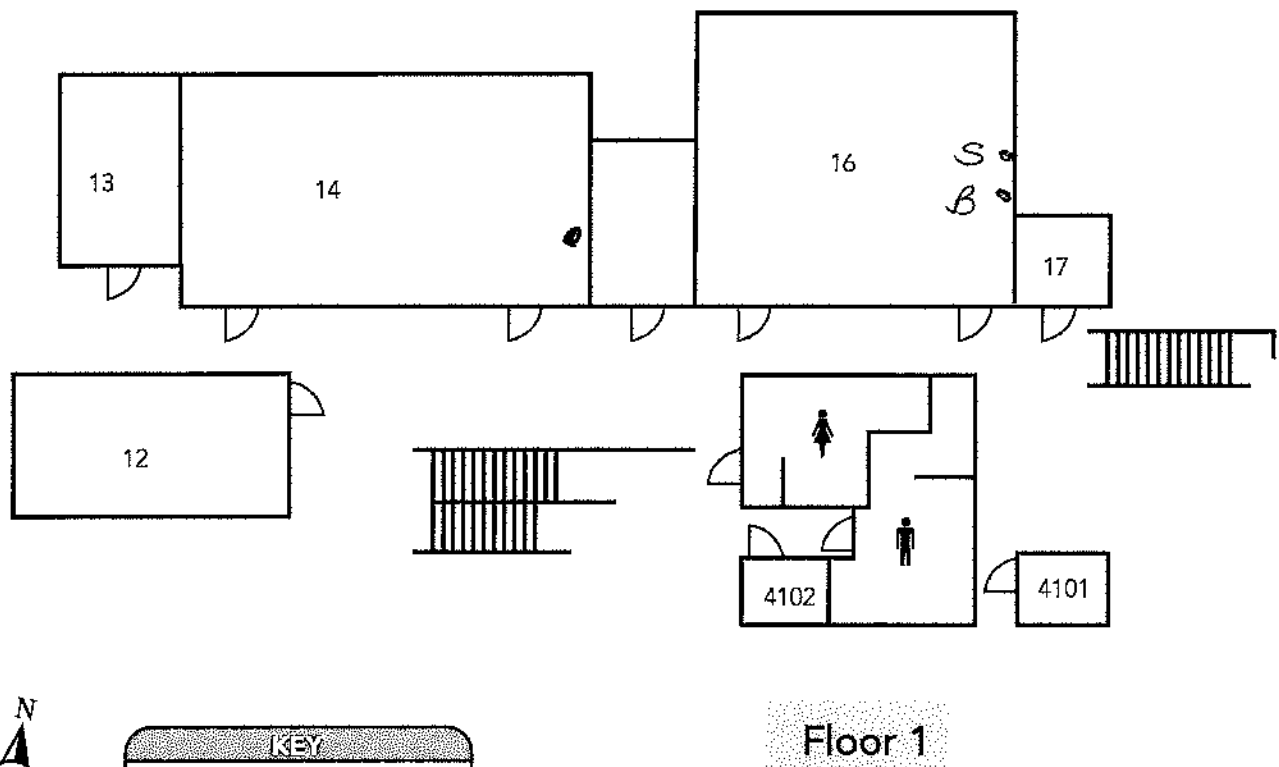
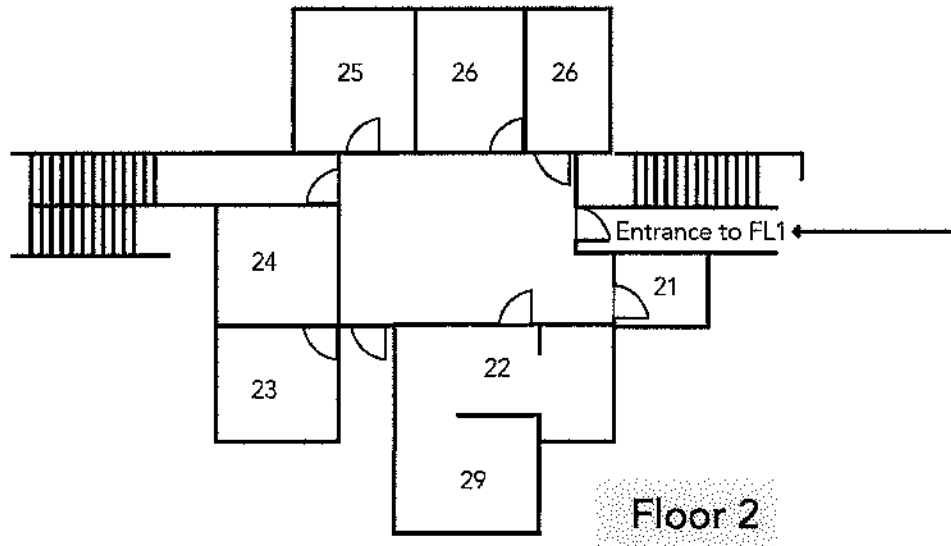


# Los Medanos College

## PS Building

2700 E. Leland Road Pittsburg, CA 94565

www.losmedanos.edu | 925-439-2181



**KEY**

- = Maintenance Closet
- = Elevator
- = Restroom

# Los Medanos College

## MATH BUILDING

2700 E. Leland Road Pittsburg, CA 94565

www.losmedanos.edu | 925-439-2181

**KEY**

-  = Maintenance Closet
-  = Elevator
-  = Restroom

MATH • FLOOR 2

MATH • FLOOR 1



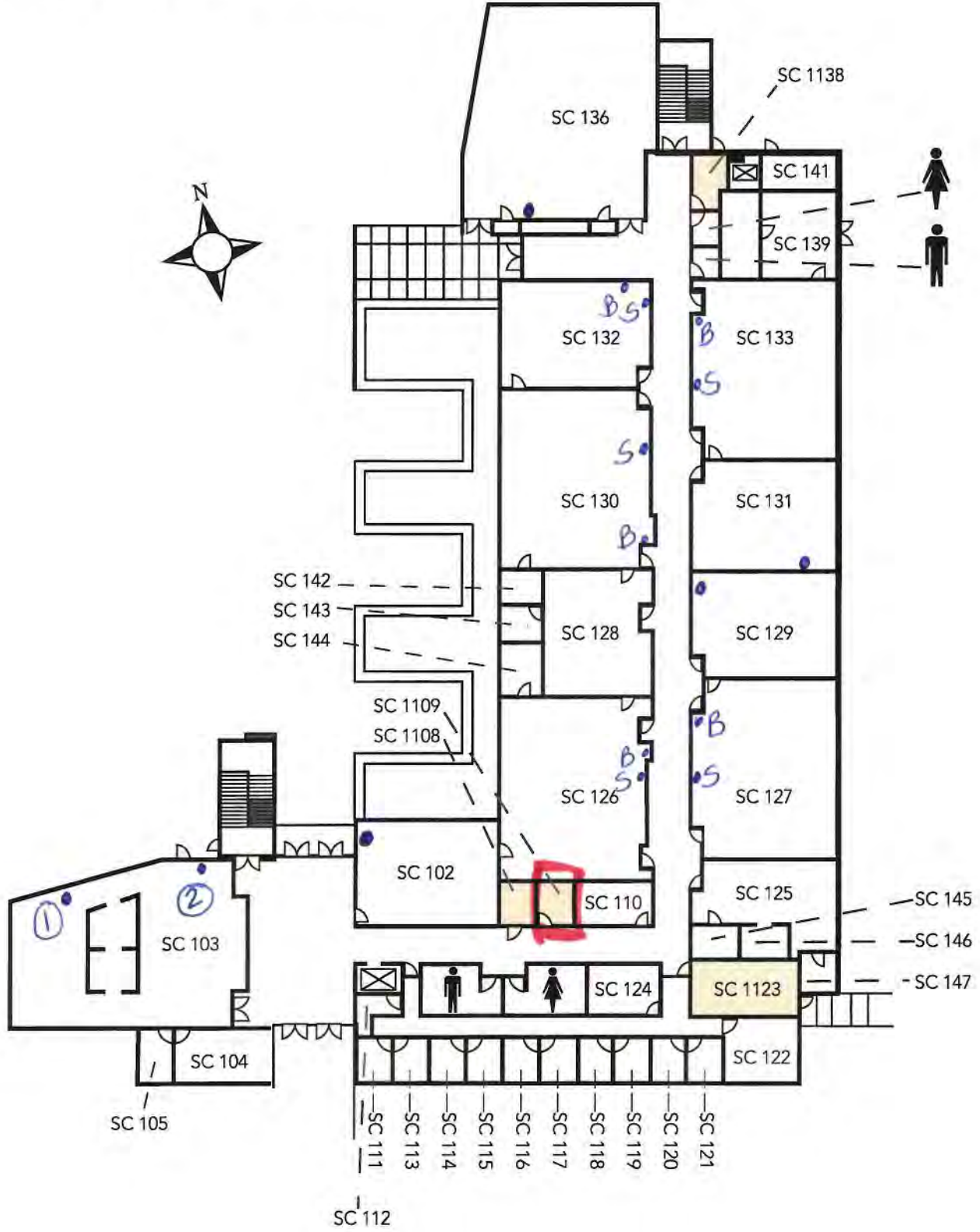
# Los Medanos College

## SCIENCE BUILDING • FLOOR 1

2700 E. Leland Road Pittsburg, CA 94565  
www.losmedanos.edu | 925-439-2181

**KEY**

-  = Maintenance Closet
-  = Elevator
-  = Restroom

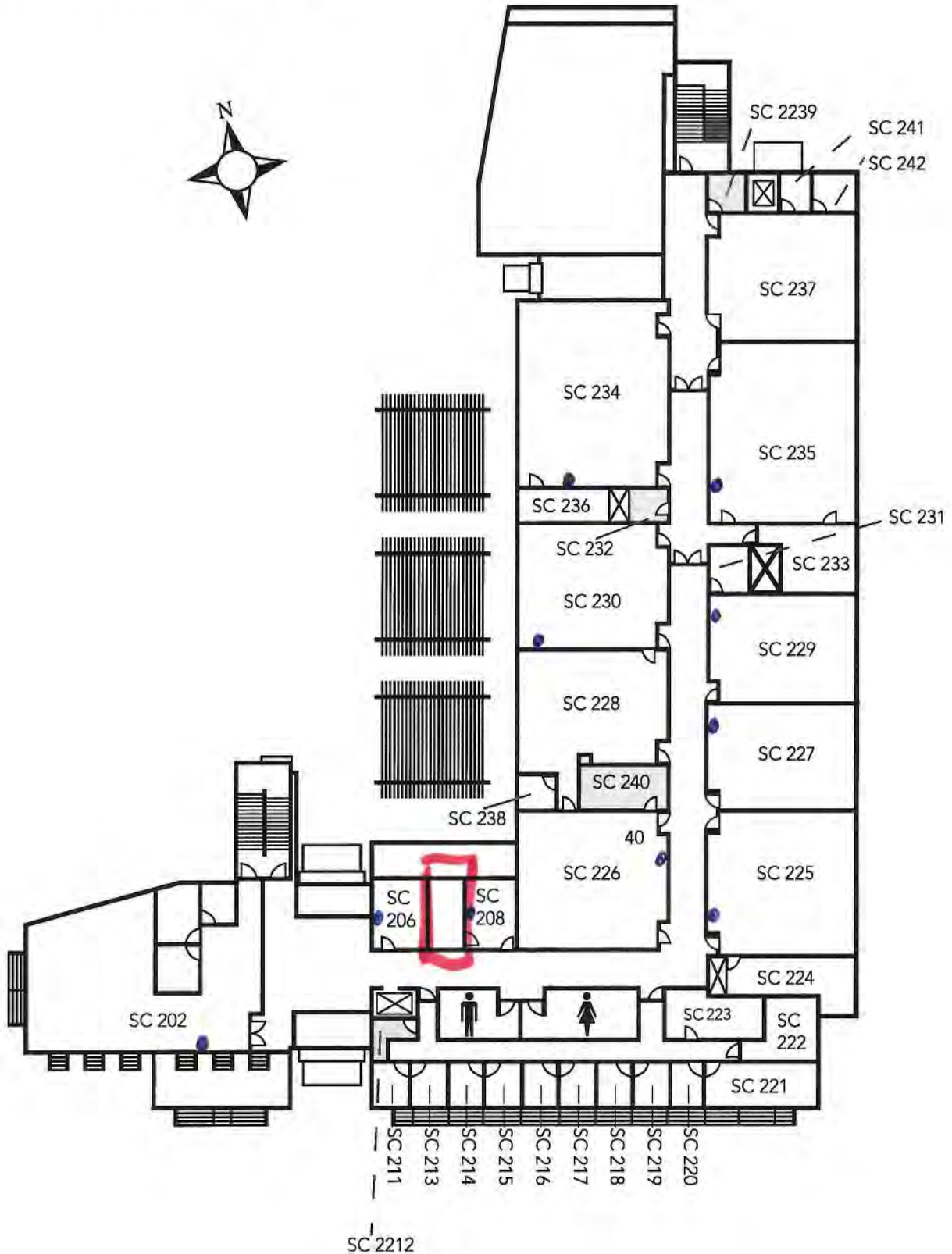


# Los Medanos College

## SCIENCE BUILDING • FLOOR 2

2700 E. Leland Road Pittsburg, CA 94565

www.losmedanos.edu | 925-439-2181



# Los Medanos College

## LIBRARY BUILDING

2700 E. Leland Road Pittsburg, CA 94565

www.losmedanos.edu | 925-439-2181

