

PL 102, 103

Team is looking adding solar and converting the landscaping in the gray area to a workspace

Team will look into new furniture for courtyard

add new power and data in exhibit room even if glass isnt removed.

add new power and data

Remove glass between exhibit room and lobby

look into adding new lighting for a brighter lobby. Need to analyze existing lights.

remove everything from the lobby for new furniture

Replace all desks with new furniture

Glass windows on the sides, with a door in the middle

new carpet and paint job in both rooms

ALTERNATE #1
PLANETARIUM

1 GROUND FLOOR PLAN
SCALE: 1/8" = 1'-0"

2 ROOF PLAN @ POP-OUT
SCALE: 1/4" = 1'-0"

LEGEND

	EXISTING WALL
	WALL
	WALL ON NEW CONC CURB
	CARPET
	CONCRETE
	LINOLEUM FLOORING
	CERAMIC TILE
	CONCRETE TOPPING
	MISCELLANEOUS NEW

SHEET NOTES

1. SEE A-5.01 FOR WALL TYPES
2. SED FOR ALL FIRE ALARM AND LIGHTING SYSTEMS.
3. SEE 2/A-10.01 FOR NON-BEARING PARTITION ANCHORAGE.
4. NEW WORK WILL REQUIRE ADDITIONAL FRAMING AT NEW WALLS, DOORS AND WINDOWS TO INCLUDE, BUT NOT LIMITED TO: 2 NEW WALL STUDS, 2 NEW KING STUDS, 2 NEW TRIMMERS, HEADER TIMBER AND ALL RELATED BLOCKING AND CRIPPLIES. SOME CONNECTIONS MAY REQUIRE TRANSITION TO STRUCTURAL STEEL, CONCRETE AND/OR BRICK.
5. PATCH EXISTING WALLS, FLOORS, CEILINGS & FINISHES TO MATCH EXISTING AND PRIME AND PAINT EXISTING WALLS AND CEILINGS TO NEXT WALL.
6. REPAIR ALL DEMO CONNECTIONS AND REPAIR ALL NEW TO EXISTING CONNECTIONS AS REQUIRED INCLUDING UT NOT LIMITED TO WINDOWS, DOORS & FINISHES.
7. CUT AND PATCH CONCRETE AS REQUIRED FOR NEW WORK.

KEYNOTES

02 Sitework

2.21 Accessible Concrete Ramp & Metal Handrails

2.28 Contrast Striping

03 Concrete

3.02 Edge of (E) Concrete Slab

3.03 Concrete Slab, S.S.D.

3.08 Patch (E) Conc. Floor at Removed Interior Walls - Stain to Match Surrounding Floor

3.12 Concrete Topping, Typ

3.18 (E) Column to Remain

3.19 (E) Wall to Remain

3.21 Concrete Pad for HVAC Equip. - SSD, SMD

05 Metals

5.01 Structural Steel Column, SSD

5.18 St Stud Furring, See 2/A-10.06

5.22 Accessible TS Handrail

5.23 TS Alcove Rail

08 Door and Windows

8.01 Hollow Metal Door

8.05 Aluminum Storefront with Door

8.07 (E) Storefront and Doors to Remain

8.13 Aluminum Window Above

8.14 Hollow Metal Window

8.17 Line of Storefront Below, Shown Dashed

8.23 Aluminum Framed Sloped Glazing

8.31 Aluminum Storefront Mullion - See 5/A-10.01

09 Finishes

9.23 Linoleum Flooring

9.35 Stain & Seal to Match Surrounding Conc.

9.38 Seal (E) Conc.

10 Specialties

10.02 Markerboard, OSC1

10.16 Fire Extinguisher in Cabinet, See 12/A-10.04

12 Furnishing

12.11 Re-install (E) Countertop

12.14 Accessible Sink and Countertop, SMD

15 Mechanical

15.08 Accessible Drinking Fountain, SPD

15.13 24"x80" HVAC Shaft Opening, SMD

15.16 HVAC Unit, SMD

15.21 HVAC Shaft, SMD

15.22 Equipment Platform, SSD

16 Electrical

16.01 Electrical Cabinet, SED

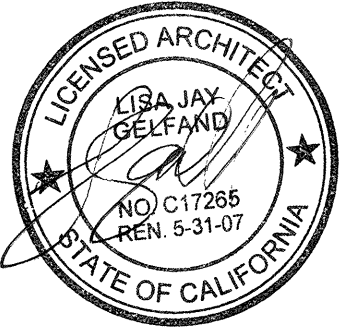
16.08 Transformer, SED

16.10 (E) Switchgear, SED

Gelfand Partners
ARCHITECTS



450 Geary Street, Suite 100
San Francisco, CA 94102
Tel. 415.346.4040
Fax. 415.346.4103
www.gelfand-partners.com



Consultants

STRUCTURAL:

Dasse Design
33 New Montgomery
Suite 850
San Francisco, CA 94105
(415)243-8400 (Tel.)/(415)243-9165 (Fax)

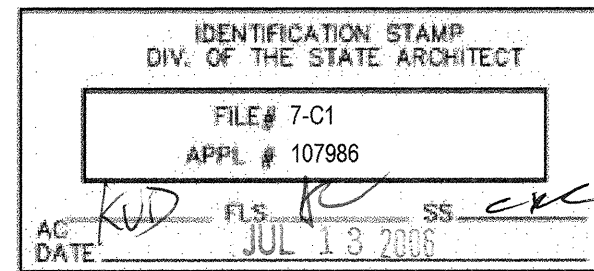
MECHANICAL/PLUMBING:

Heltz Engineering
199925 N. Half Moon Drive
Surprise, AZ 85374
(623)544-0956 (Tel.)/(623)544-5710 (Fax)

ELECTRICAL:

WHM Engineering
1605 School Street
Moraga, CA 94556
(925)376-2902 (Tel.)/(925)376-2904 (Fax)

DSA Application



Drawing Record/Revisions

04/14/06 DSA SUBMISSION

Contra Costa Community College District
Diablo Valley College
Planetarium & Classroom
Upgrade

321 Golf Club Road
Pleasant Hill, CA 94523

Sheet

GROUND FLOOR
PLAN

A-2.02

DSA SET

04-14-06

PERFORMING ARTS BUILDING

FLOOR PLAN

PAC 101, 102, 106

SHEET 2 OF 5

BLDG. NAME
ABBREVIATED
PA
BLDG. CODE
023



0 5 10 20 40

SCALE: 1" = 20'

2 desktops

Interior TV outside
facing. Will need
power, data and
potentially HDMI

new door with window

outlets and data
drops along walls.
Same for 101 and
102

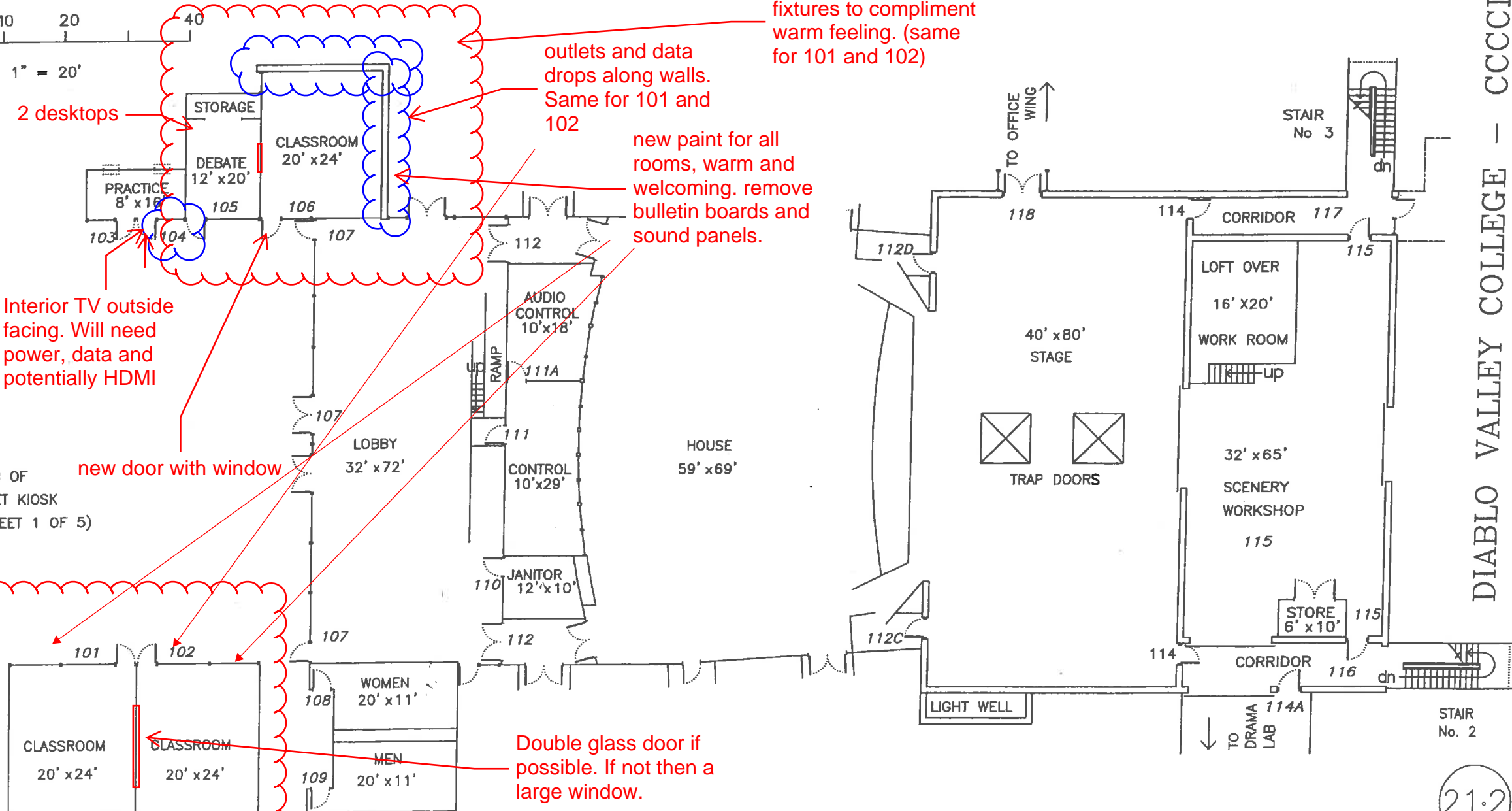
new paint for all
rooms, warm and
welcoming. remove
bulletin boards and
sound panels.

raising/changing light
fixtures to compliment
warm feeling. (same
for 101 and 102)

LOCATION OF
TICKET KIOSK
(SEE SHEET 1 OF 5)

Double glass door if
possible. If not then a
large window.

FLOORPLAN/PAC2
ALL DIMENSIONS ARE APPROXIMATE



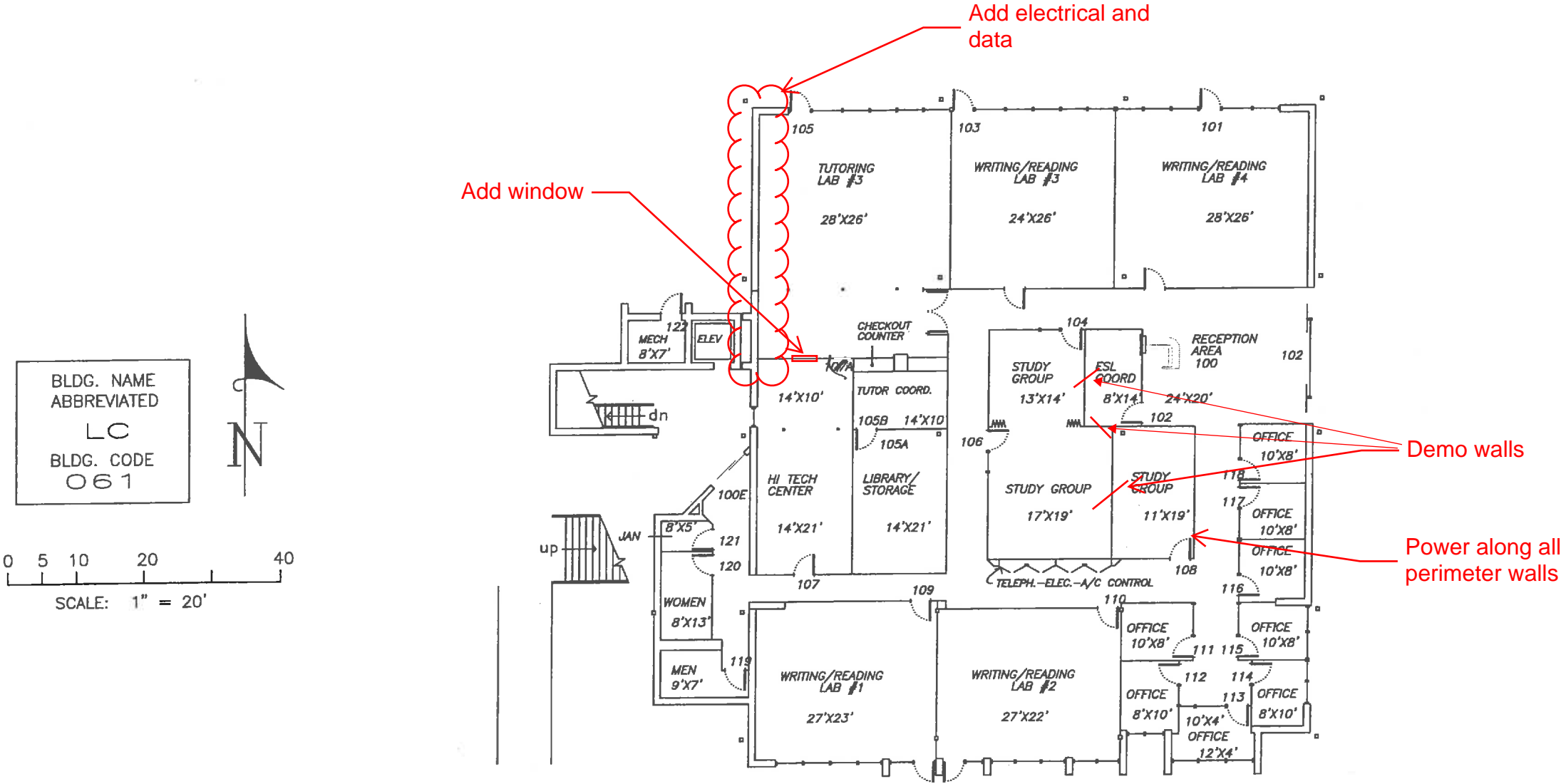
DIABLO VALLEY COLLEGE - CCCC

LC 102, 104, 105A, 105B, 106, 107, 108

LEARNING CENTER

FLOOR PLAN

SHEET 1 OF 2



FIRST FLOOR

DIABLO VALLEY COLLEGE - CCCC